



FOR SALE



LAND



4 ACRES



2215 Goodman Road

Billings, Montana 59101

Property Description

Approximately 4.00 Acres of Commercial Land

Site located just South of the Zoo Drive Exit and I-90 Interchanges.

Controlled Industrial Land

Tax ID D00877.

Legal Description: S24, T01 S, R25 E, C.O.S. 1454, PARCEL 1B, AMND TR 1

Price: \$550,000 (\$3.15 PSF)

OFFERING SUMMARY

Sale Price: \$550,000

Lot Size: 4 Acres

DEMOGRAPHICS

	1 MILE	5 MILES	10 MILES
Total Households	392	26,208	57,070
Total Population	846	58,343	133,678
Average HH Income	\$55,834	\$59,417	\$62,081



<https://www.naibusinessproperties.com>

Brian McDonald

Broker/Principal | 406.294.6303

bmcdonald@naibusinessproperties.com

Al Koelzer

Broker | 406.591.4815

koelzer@naibusinessproperties.com

NO WARRANTY, EXPRESS OR IMPLIED, IS MADE AS TO THE ACCURACY OF THE INFORMATION CONTAINED HEREIN. THIS INFORMATION IS SUBMITTED SUBJECT TO ERRORS, OMISSIONS, CHANGE OF PRICE, RENTAL OR OTHER CONDITIONS, WITHDRAWAL WITHOUT NOTICE, AND IS SUBJECT TO ANY SPECIAL LISTING CONDITIONS IMPOSED BY OUR PRINCIPALS, COOPERATING BROKERS, BUYERS, TENANTS AND OTHER PARTIES WHO RECEIVE THIS DOCUMENT SHOULD NOT RELY ON IT, BUT SHOULD USE IT AS A STARTING POINT OF ANALYSIS, AND SHOULD INDEPENDENTLY CONFIRM THE ACCURACY OF THE INFORMATION CONTAINED HEREIN THROUGH A DUE DILIGENCE REVIEW OF THE BOOKS, RECORDS, FILES AND DOCUMENTS THAT CONSTITUTE RELIABLE SOURCES OF THE INFORMATION DESCRIBED HEREIN. LOGOS ARE FOR IDENTIFICATION PURPOSES ONLY AND MAY BE TRADEMARKS OF THEIR RESPECTIVE COMPANIES. NAI CAPITAL, INC. CA BRE LIC. #01990696.



FOR SALE



LAND



4 ACRES



<https://www.naibusinessproperties.com>

Brian McDonald
Broker/Principal | 406.294.6303
bmcDonald@naibusinessproperties.com

Al Koelzer
Broker | 406.591.4815
koelzer@naibusinessproperties.com

NO WARRANTY, EXPRESS OR IMPLIED, IS MADE AS TO THE ACCURACY OF THE INFORMATION CONTAINED HEREIN. THIS INFORMATION IS SUBMITTED SUBJECT TO ERRORS, OMISSIONS, CHANGE OF PRICE, RENTAL OR OTHER CONDITIONS, WITHDRAWAL WITHOUT NOTICE, AND IS SUBJECT TO ANY SPECIAL LISTING CONDITIONS IMPOSED BY OUR PRINCIPALS, COOPERATING BROKERS, BUYERS, TENANTS AND OTHER PARTIES WHO RECEIVE THIS DOCUMENT SHOULD NOT RELY ON IT, BUT SHOULD USE IT AS A STARTING POINT OF ANALYSIS, AND SHOULD INDEPENDENTLY CONFIRM THE ACCURACY OF THE INFORMATION CONTAINED HEREIN THROUGH A DUE DILIGENCE REVIEW OF THE BOOKS, RECORDS, FILES AND DOCUMENTS THAT CONSTITUTE RELIABLE SOURCES OF THE INFORMATION DESCRIBED HEREIN. LOGOS ARE FOR IDENTIFICATION PURPOSES ONLY AND MAY BE TRADEMARKS OF THEIR RESPECTIVE COMPANIES. NAI CAPITAL, INC. CA BRE LIC. #01990696.



FOR SALE



LAND



4 ACRES



Map data ©2023 Google Imagery ©2023 , Airbus, CNES / Airbus, Maxar Technologies, USDA/FPAC/Geo



<https://www.naibusinessproperties.com>

Brian McDonald
Broker/Principal | 406.294.6303
bmcdonald@naibusinessproperties.com

Al Koelzer
Broker | 406.591.4815
koelzer@naibusinessproperties.com

NO WARRANTY, EXPRESS OR IMPLIED, IS MADE AS TO THE ACCURACY OF THE INFORMATION CONTAINED HEREIN. THIS INFORMATION IS SUBMITTED SUBJECT TO ERRORS, OMISSIONS, CHANGE OF PRICE, RENTAL OR OTHER CONDITIONS, WITHDRAWAL WITHOUT NOTICE, AND IS SUBJECT TO ANY SPECIAL LISTING CONDITIONS IMPOSED BY OUR PRINCIPALS, COOPERATING BROKERS, BUYERS, TENANTS AND OTHER PARTIES WHO RECEIVE THIS DOCUMENT SHOULD NOT RELY ON IT, BUT SHOULD USE IT AS A STARTING POINT OF ANALYSIS, AND SHOULD INDEPENDENTLY CONFIRM THE ACCURACY OF THE INFORMATION CONTAINED HEREIN THROUGH A DUE DILIGENCE REVIEW OF THE BOOKS, RECORDS, FILES AND DOCUMENTS THAT CONSTITUTE RELIABLE SOURCES OF THE INFORMATION DESCRIBED HEREIN. LOGOS ARE FOR IDENTIFICATION PURPOSES ONLY AND MAY BE TRADEMARKS OF THEIR RESPECTIVE COMPANIES. NAI CAPITAL, INC. CA BRE LIC. #01990696.



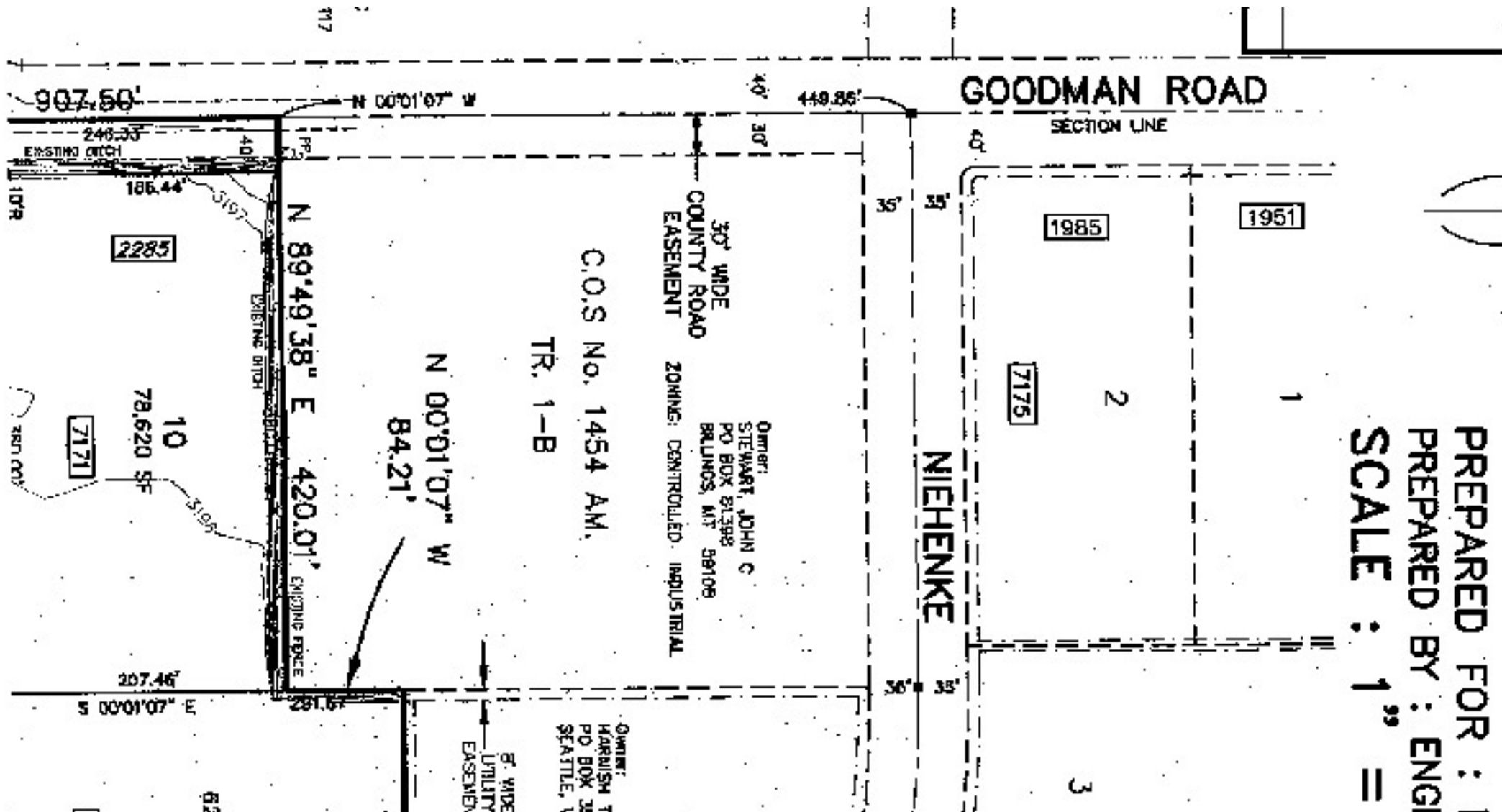
FOR SALE



LAND



4 ACRES



Brian McDonald
Broker/Principal | 406.294.6303
bmcdonald@naibusinessproperties.com

Al Koelzer
Broker | 406.591.4815
koelzer@naibusinessproperties.com

