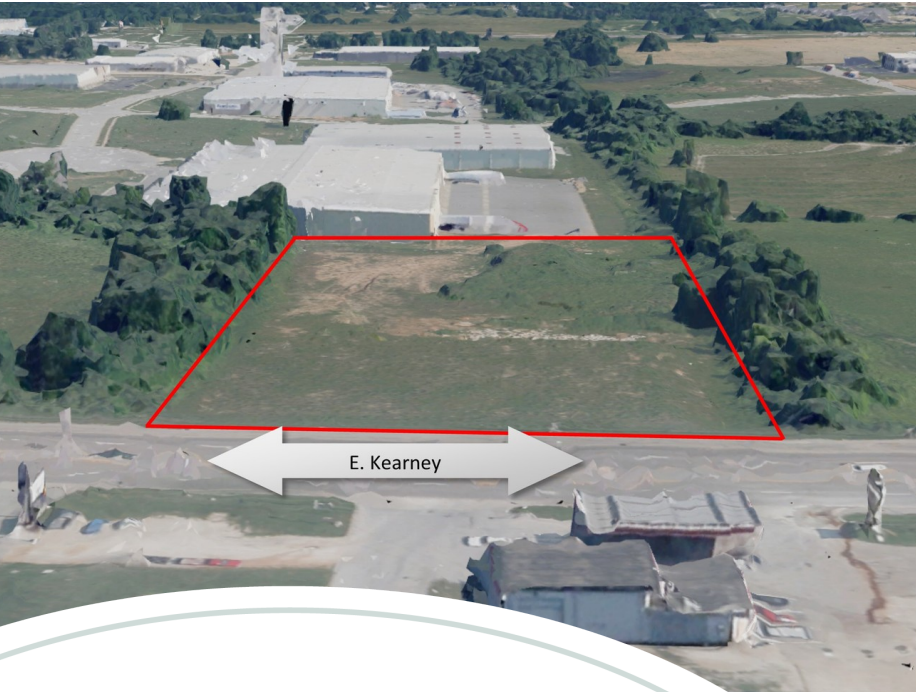


2739 E. Kearney

2739 E. Kearney • Springfield, MO 65803



Sale Overview

Sale Price	\$392,000
Lot Size	3.0 Acres
Zoning	Industrial Commercial
Market	Springfield
Sub Market	Northeast Springfield
Cross Streets	Kearney & Neergard
Traffic Count	22,833

Property Overview

Property

This property sits right on E. Kearney which allows for easy access to Hwy 65 and the I-44 interchange.

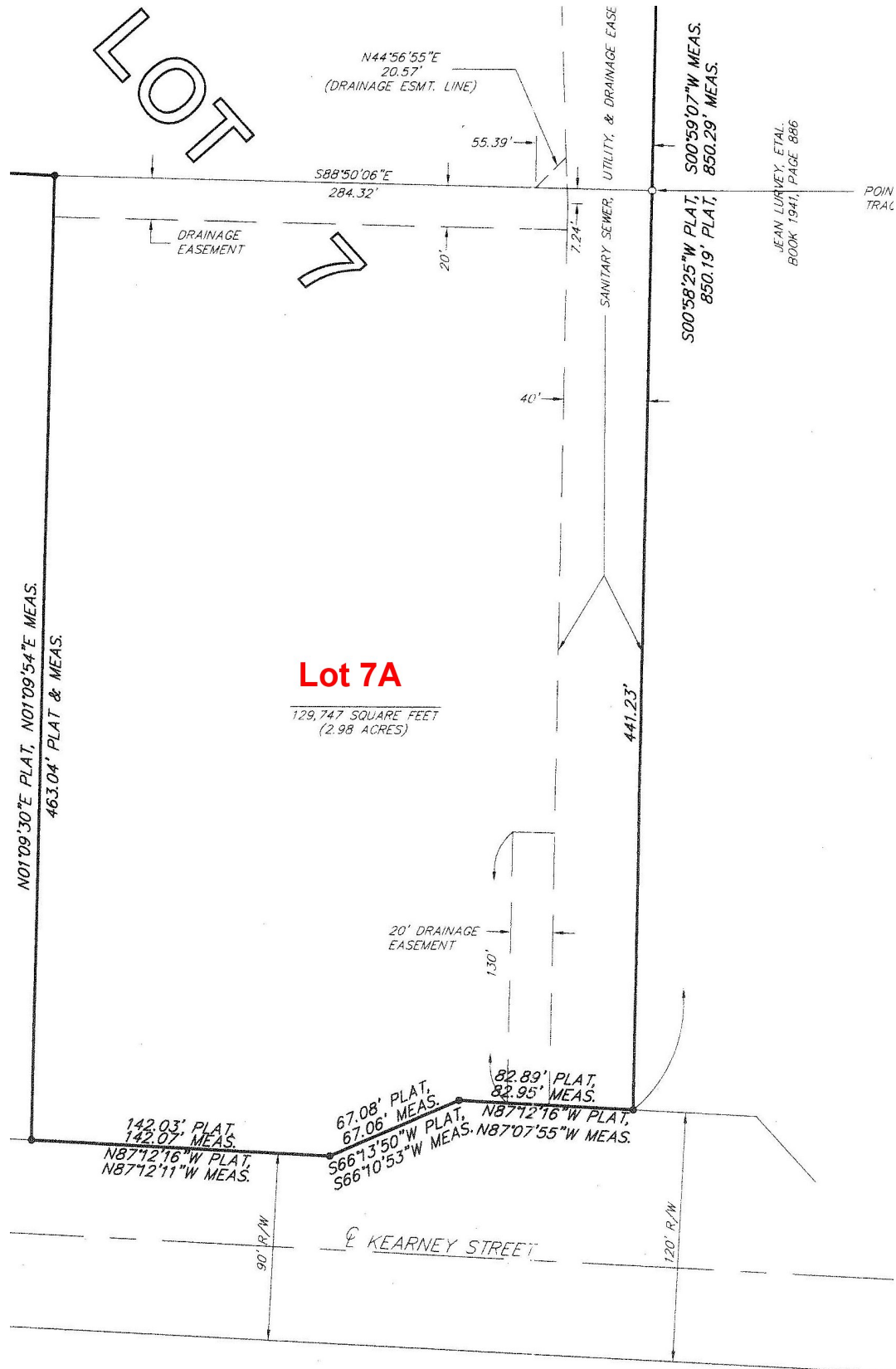
Location

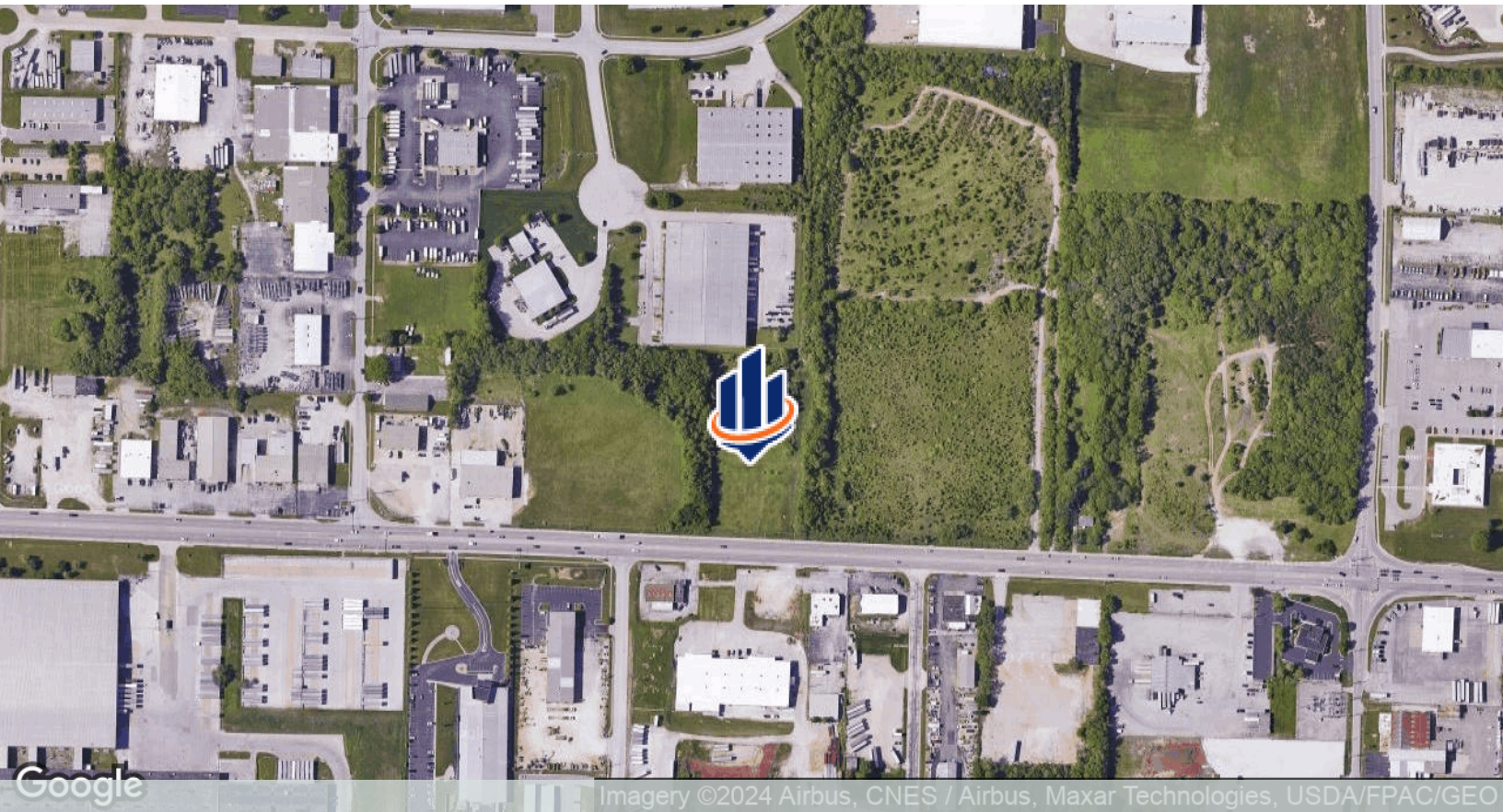
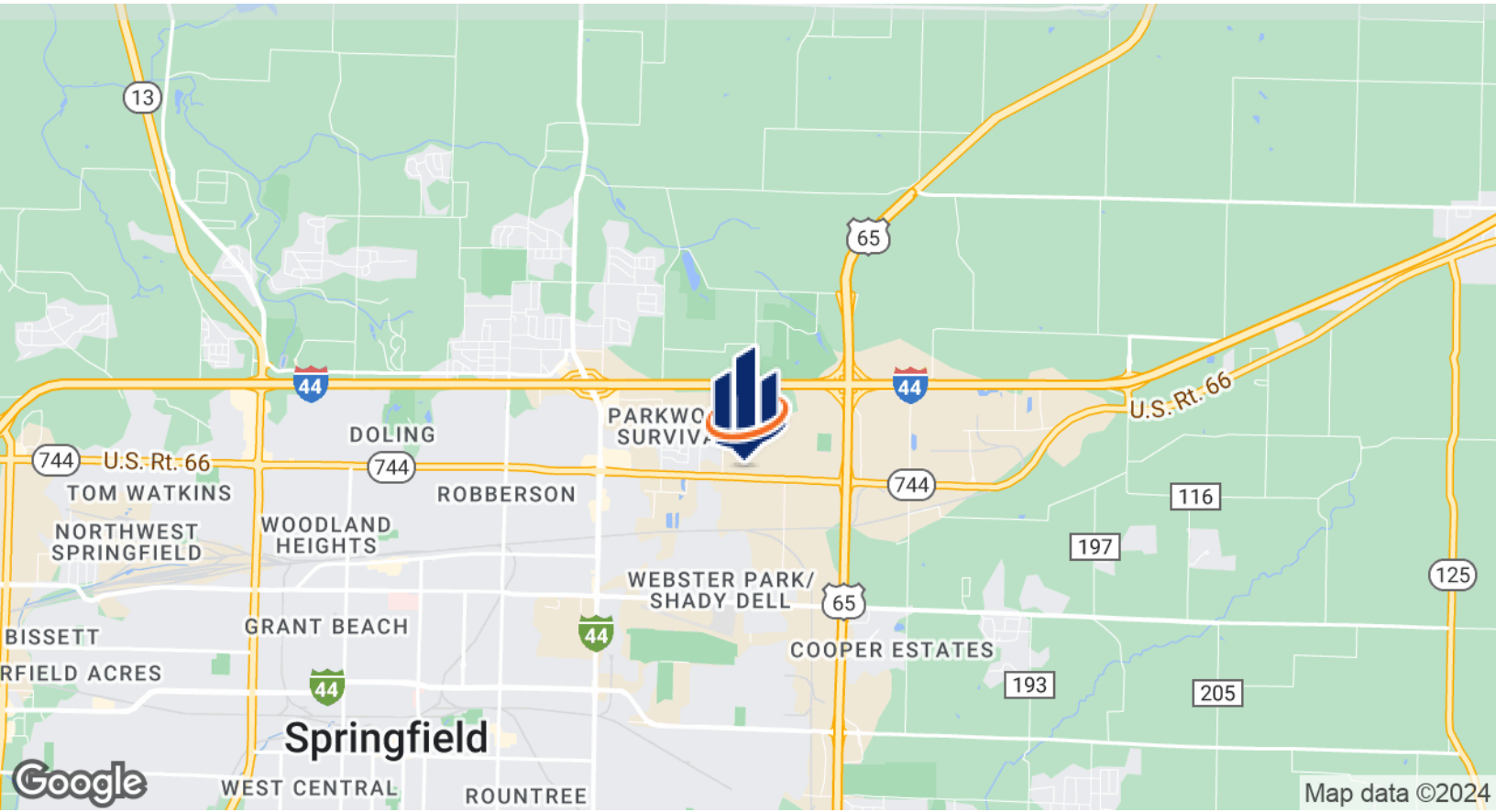
This vacant land is located on E. Kearney with 22,833 cars per day and is part of the North Creek Business Park.

Presented by

TOM RANKIN, CCIM
417.887.8826 x102
tom.rankin@svn.com

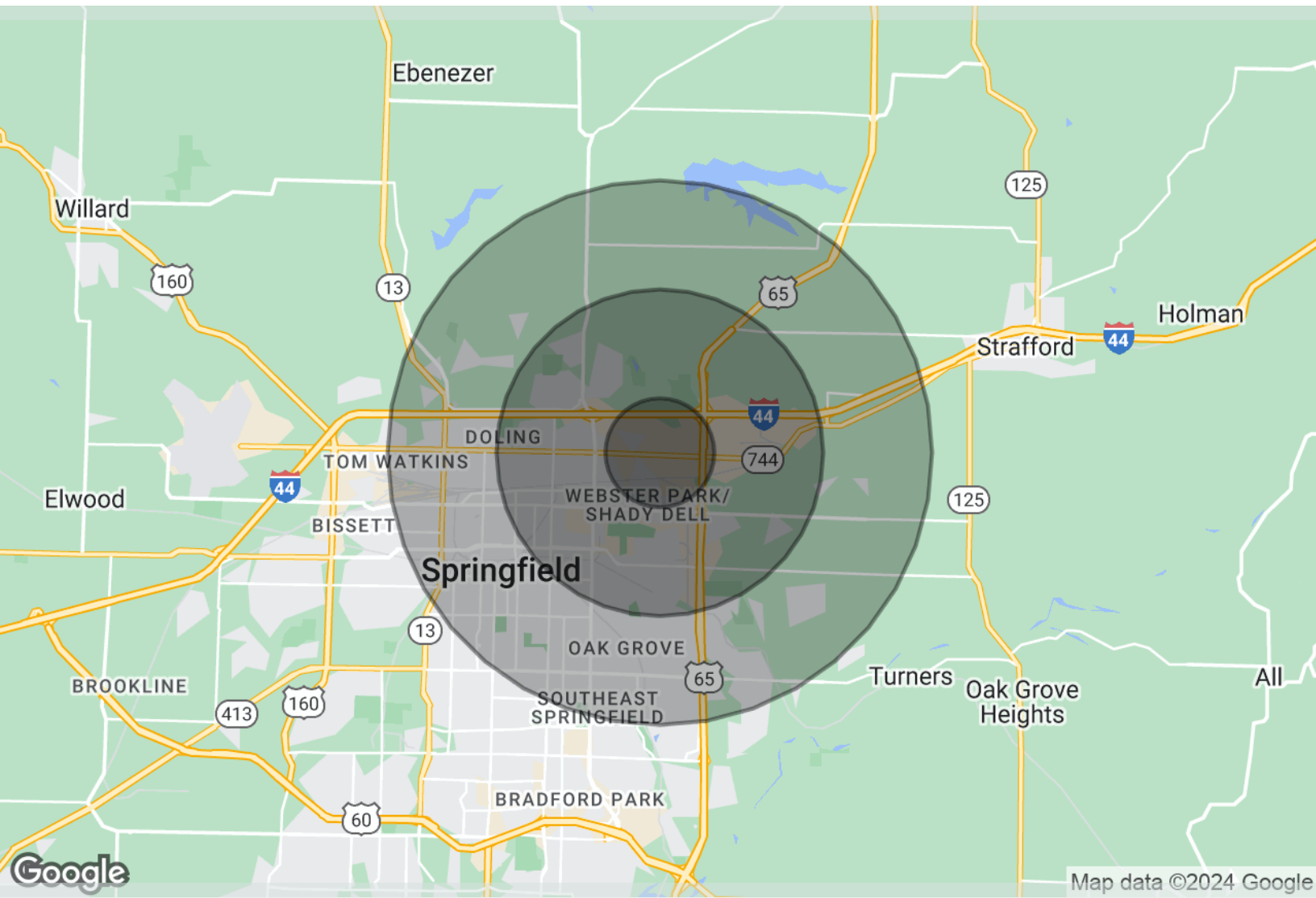
JACK RANKIN
417.860.9951
jack.rankin@svn.com





2739 E. Kearney

Demographics Analysis



2739 E. Kearney | Springfield, MO 65803

Radius Map

1 Mile

3 Miles

5 Miles

* Demographic information provided by BuildOut, LLC

2739 E. Kearney | Springfield, MO 65803



Demographics Report

	1 Mile	3 Miles	5 Miles
Total Population	2,572	31,194	101,512
Total Number of Households	1,042	12,691	42,179
Total Number of Persons per Household	2.5	2.5	2.4
Average House Value	\$90,464	\$103,664	\$127,674
Average Household Income	\$37,489	\$43,176	\$46,508
Median Age	34.8	32.3	33.0
Median Age - Male	34.6	32.6	32.5
Median Age - Female	35.5	32.5	33.6
Total Population - White	2,214	27,447	90,432
Total Percent - White	86.1%	88.0%	89.1%
Total Population - Black	44	934	4,059
Total Percent - Black	1.7%	3.0%	4.0%
Total Population - Asian	4	508	1,875
Total Percent - Asian	0.2%	1.6%	1.8%
Total Population - Hawaiian	0	0	128
Total Percent - Hawaiian	0.0%	0.0%	0.1%
Total Population - Indian	0	67	339
Total Percent - Indian	0.0%	0.2%	0.3%
Total Population - Other	297	1,178	1,675
Total Percent - Other	11.5%	3.8%	1.7%
Total Population - Hispanic	347	1,919	3,956
Total Percent - Hispanic	13.5%	6.2%	3.9%

* Demographic information provided by BuildOut, LLC



Tom Rankin, CCIM

Managing Director

SVN | Rankin Company, LLC

Tom Rankin, CCIM, has lived in southwest Missouri for over 45 years. In 1990, he started Rankin Company specializing in the general brokerage of commercial real estate. Soon there after he launched Rankin Development, specializing in the development of industrial projects. In 2006, Rankin Company affiliated with the national brokerage firm SVN and in doing so, became the only nationally recognized real estate company with an office in southwest Missouri. SVN/Rankin Company has repeatedly attained the distinction of having one of the top 10 most productive offices (out of over 160) in SVN nationwide and most recently in 2015.

His most recent development projects are North Creek Business Park, a 108 acre distribution and warehouse project, a 15 acre retail project called The Shoppes at James River and a 98 acre retail project called Springfield Plaza. Tom has developed over 600,000 sf of industrial built-to-suit projects ranging in size from 40,000-108,000 sq. ft. for many national and regional companies.

Memberships & Affiliations

CCIM Kansas City Chapter - member
NAIOP Commercial Real Estate Developers Association,
Private Developers III - Past Chairman
ICSC - member

Tom Rankin, CCIM

Managing Director

Phone: 417.887.8826 x102

Fax: 417.875.9233

Cell: 417.860.2577

Email: tom.rankin@svn.com

Address: 2808 S. Ingram Mill, Suite A100
Springfield, MO 65804

COMMUNITY INVOLVEMENT:

- Springfield Business Development Corp. - Past President
- Springfield Chamber of Commerce - Past Board Member
- Burrell Behavioral Health – Current Board Member
- Central Bank - Current Director
- Mercy Hospital Board - Board Member
- Mercy Health Foundation - Past Board Member
- Fellowship Of Christian Athletes - Current Board Member
- Board of Public Utilities - Past Chairman
- Breast Cancer Foundation of the Ozarks - Past President
- Southeast Rotary - Past Board Member
- Community Blood Center of the Ozarks - Past Board Member
- Boys and Girls Club of Springfield - Past Treasurer

Disclaimer | Confidentiality