

# FOR LEASE

2012 Centerview Rd Tallahassee, FL 32301

# NAI TALCOR



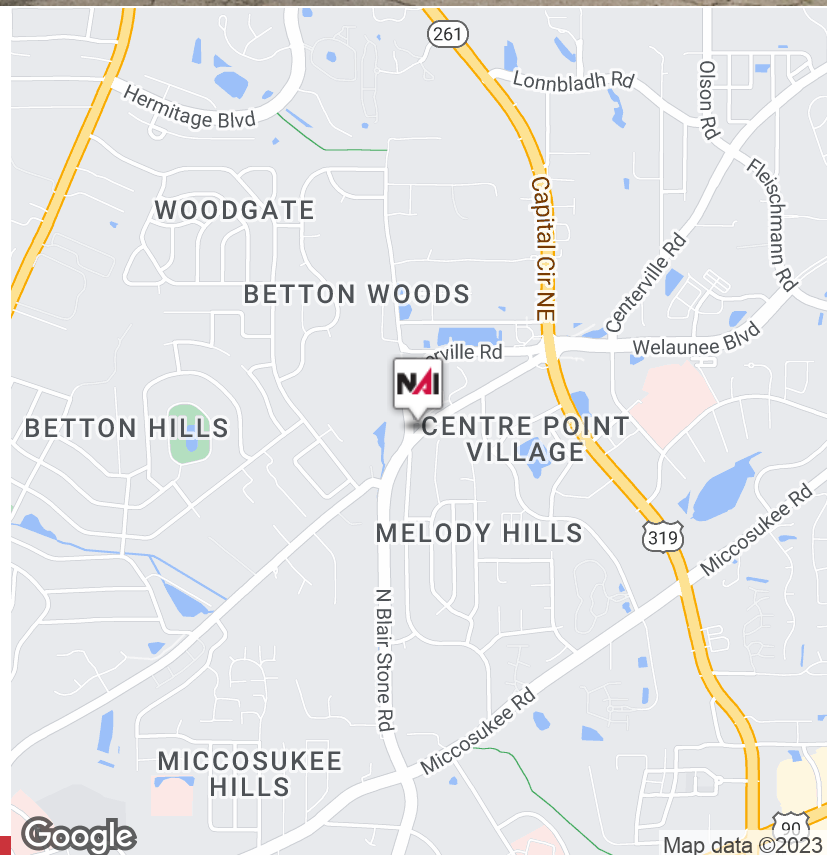
## Office | 32,000 - 96,008 SF

The Hartman Building at the Koger Center is part of an 18 building office community. It's located off of Capital Circle SE close to the State of Florida office complex, Southwood Community, and Highway 27.

- Opportunity to Lease Entire Building
- Natural Lighting on Every Floor
- 24/7 Security & Monitoring
- On-site Management
- ADA Compliant
- Ample Parking

## Available Spaces

Spaces	Lease Rate	Size (SF)
2012 Centerview Road	\$21.00 SF/yr	96,008



✉ **John W. McNeill, SIOR**  
+1 850 251 5504  
jmcneill@talcor.com

No Warranty Or Representation, Express Or Implied, Is Made As To The Accuracy Of The Information Contained Herein, And The Same Is Submitted Subject To Errors, Omissions, Change Of Price, Rental Or Other Conditions, Prior Sale, Lease Or Financing, Or Withdrawal Without Notice, And Of Any Special Listing Conditions Imposed By Our Principals No Warranties Or Representations Are Made As To The Condition Of The Property Or Any Hazards Contained Therein Are Any To Be Implied.

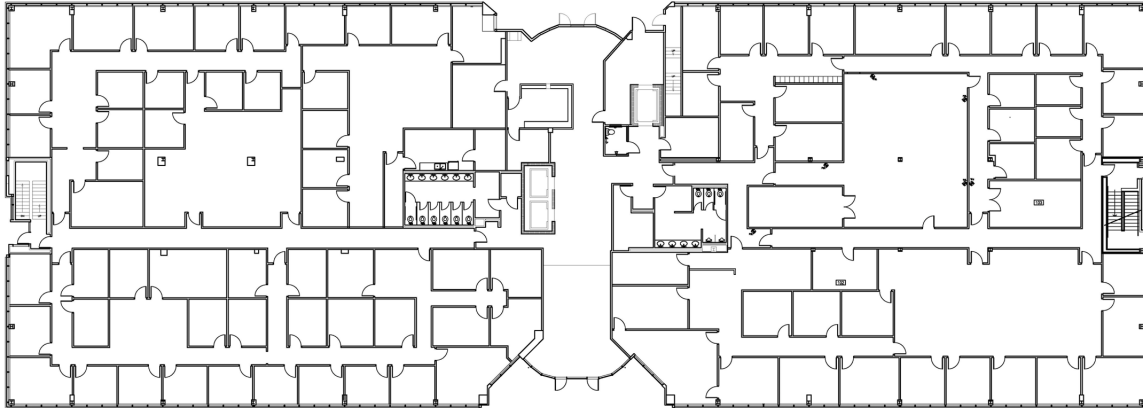


**NAI TALCOR**

1018 Thomasville Road, Suite 200A  
talcor.com

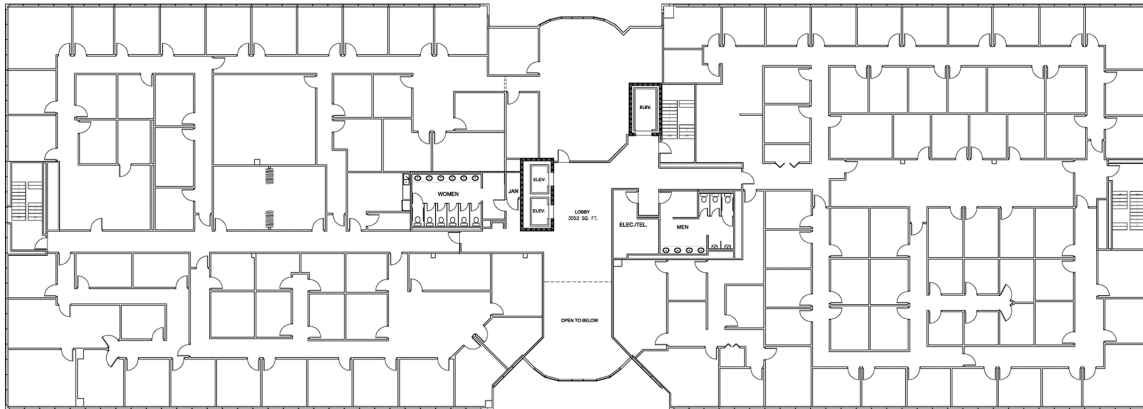
# FIRST FLOOR

2012 Centerview Rd Tallahassee, FL 32301



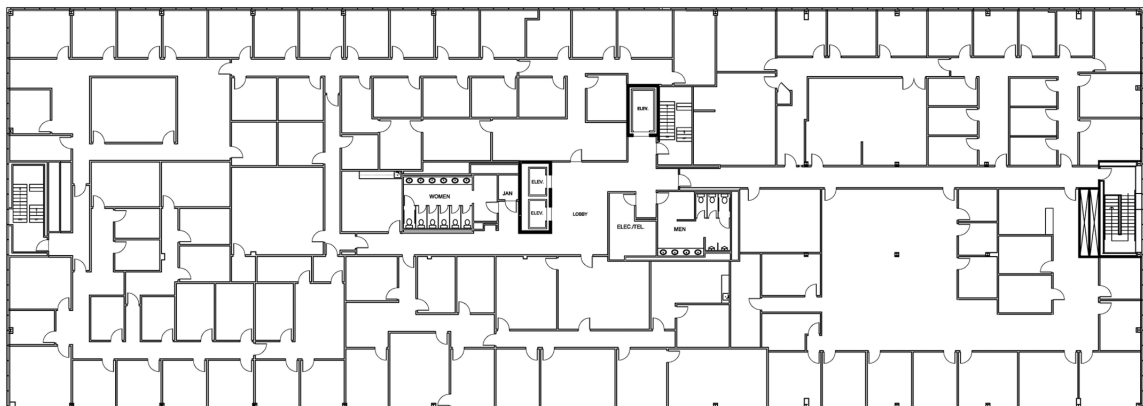
AS-BUILT FIRST FLOOR PLAN  
HARTMAN BUILDING

09-15-15  
SC: 3/32" = 1'-0"



AS-BUILT SECOND FLOOR PLAN  
HARTMAN BUILDING

09-15-15  
SC: 3/32" = 1'-0"



AS-BUILT THIRD FLOOR PLAN  
HARTMAN BUILDING

09-15-15  
SC: 3/32" = 1'-0"



✉ John W. McNeill, SIOR

+1 850 251 5504

jmcneill@talcor.com

No Warranty Or Representation, Express Or Implied, Is Made As To The Accuracy Of The Information Contained Herein, And The Same Is Submitted Subject To Errors, Omissions, Change Of Price, Rental Or Other Conditions, Prior Sale, Lease Or Financing, Or Withdrawal Without Notice, And Of Any Special Listing Conditions Imposed By Our Principals No Warranties Or Representations Are Made As To The Condition Of The Property Or Any Hazards Contained Therein Are Any To Be Implied.

**NA TALCOR**