

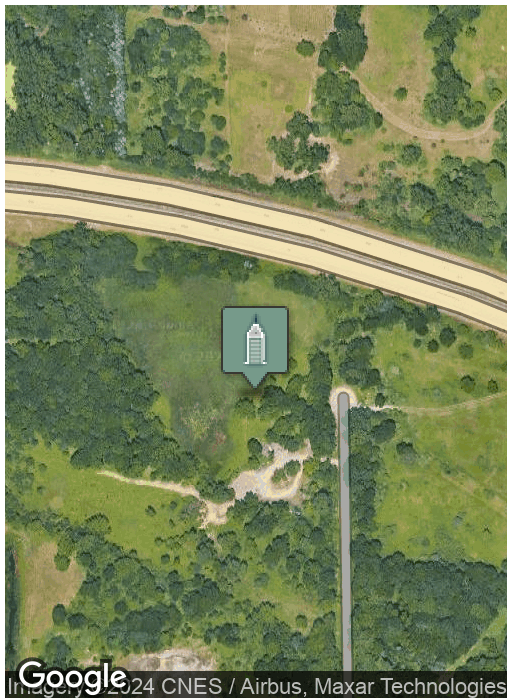
16 Acres Industrial I-2 Land

STAEBLER N, ANN ARBOR, MI 48103



Swisher
COMMERCIAL

FOR SALE



SUMMARY

Sale Price:	\$1,000,000
Lot Size:	16.53 Acres
Zoning:	I-2 General Industrial
2023 Taxes:	\$10,003

PROPERTY OVERVIEW

One of few I-2 Industrial zoned parcels in Scio Township.

Over 16 acres of strategically located land between the Baker (Exit 167) and Zeeb (Exit 169) Road I-94 interchanges. N Staebler Road is paved and runs north of Jackson Road and fronts the south side of I-94. Excellent I-94 visibility.

The parcel has full utility access and is comprised of open yard and wooded area, as well as some wetlands that equates to roughly 9 buildable acres.

***Building
relationships.***

208 East Washington Street Ann Arbor, MI 48104

734.663.0501

Charlie Koenn

734.926.0230

CKOENN@SWISHERCOMMERCIAL.COM

SWISHERCOMMERCIAL.COM

16 Acre Heavy Industrial for Sale

STAEBLER N, ANN ARBOR, MI 48103



Swisher
COMMERCIAL



***Building
relationships.***

208 East Washington Street Ann Arbor, MI 48104

734.663.0501

Charlie Koenn

734.926.0230

CKOENN@SWISHERCOMMERCIAL.COM

SWISHERCOMMERCIAL.COM

16 Acre Heavy Industrial for Sale

STAEBLER N, ANN ARBOR, MI 48103



**Building
relationships.**

208 East Washington Street Ann Arbor, MI 48104

734.663.0501

Charlie Koenn

734.926.0230

CKOENN@SWISHERCOMMERCIAL.COM

SWISHERCOMMERCIAL.COM