

# FOR SALE

Fortune Blvd Midway, FL 32343

# NAI TALCOR

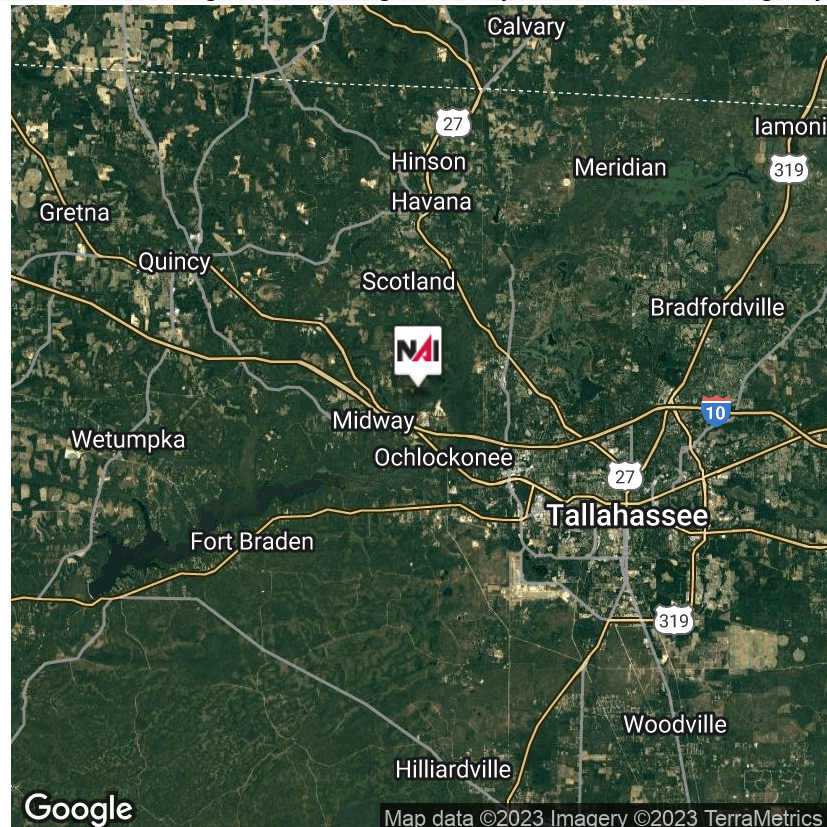


Map data ©2022 Imagery ©2022, Maxar Technologies, U.S. Geological Survey, USDA Farm Service Agency

## LAND FOR SALE | 2.5 Acres

- 2.5 Acres with 290SF of Frontage on Fortune Boulevard
- Proximity to Intersection of Hwy 90 and Interstate 10
- Truck access to the lighted intersection is the best now available in the entire park
- Water and Sewer service already installed
- Rolling Land High & Dry - Lot 6 Block A + .5 Acres

**Sale Price: \$187,500**



Map data ©2023 Imagery ©2023 TerraMetrics

✉ **Alan Richardson**  
+1 850 545 2273  
alan@talcor.com

No Warranty Or Representation, Express Or Implied, Is Made As To The Accuracy Of The Information Contained Herein, And The Same Is Submitted Subject To Errors, Omissions, Change Of Price, Rental Or Other Conditions, Prior Sale, Lease Or Financing, Or Withdrawal Without Notice, And Of Any Special Listing Conditions Imposed By Our Principals No Warranties Or Representations Are Made As To The Condition Of The Property Or Any Hazards Contained Therein Are Any To Be Implied.



**NAI TALCOR**

1018 Thomasville Road, Suite 200A  
talcor.com



# FOR SALE

Fortune Blvd Midway, FL 32343



**2.5 ACRES  
FOR SALE**



**Alan Richardson**  
+1 850 545 2273  
alan@talcor.com

No Warranty Or Representation, Express Or Implied, Is Made As To The Accuracy Of The Information Contained Herein, And The Same Is Submitted Subject To Errors, Omissions, Change Of Price, Rental Or Other Conditions, Prior Sale, Lease Or Financing, Or Withdrawal Without Notice, And Of Any Special Listing Conditions Imposed By Our Principals No Warranties Or Representations Are Made As To The Condition Of The Property Or Any Hazards Contained Therein Are Any To Be Implied.

**NA TALCOR**



Fortune Blvd Midway, FL 32343

**2.5 ACRES  
FOR SALE**



### ABBREVIATIONS AND SYMBOLS

- |          |                                      |
|----------|--------------------------------------|
| 0. S. L. | STATIONING OF STATIONS               |
| 1.       | = CHAINAGE                           |
| 2.       | = ROAD MARK                          |
| 3.       | = CHAINAGE MEASUREMENT               |
| 4.       | = SLOPE                              |
| 5.       | = ROAD BEARING                       |
| 6.       | = CHAIN WORTH                        |
| 7.       | = DELTA OR CENTRAL ANGLE             |
| 8.       | = ROAD BEAR                          |
| 9.       | = CHAINAGE                           |
| 10.      | = CHAINAGE                           |
| 11.      | = END OF STATIONS                    |
| 12.      | = LINE, DEPARTMENT OF TRANSPORTATION |
| 13.      | = FINE, COMPLETE WORKMENT            |
| 14.      | = FINE, MEASUREMENT                  |
| 15.      | = FINE, MEASUREMENT                  |
| 16.      | = FINE, MEASUREMENT                  |
| 17.      | = FINE, MEASUREMENT                  |
| 18.      | = FINE, MEASUREMENT                  |
| 19.      | = FINE, MEASUREMENT                  |
| 20.      | = FINE, MEASUREMENT                  |
| 21.      | = FINE, MEASUREMENT                  |
| 22.      | = FINE, MEASUREMENT                  |
| 23.      | = FINE, MEASUREMENT                  |
| 24.      | = FINE, MEASUREMENT                  |
| 25.      | = FINE, MEASUREMENT                  |
| 26.      | = FINE, MEASUREMENT                  |
| 27.      | = FINE, MEASUREMENT                  |
| 28.      | = FINE, MEASUREMENT                  |
| 29.      | = FINE, MEASUREMENT                  |
| 30.      | = FINE, MEASUREMENT                  |
| 31.      | = FINE, MEASUREMENT                  |
| 32.      | = FINE, MEASUREMENT                  |
| 33.      | = FINE, MEASUREMENT                  |
| 34.      | = FINE, MEASUREMENT                  |
| 35.      | = FINE, MEASUREMENT                  |
| 36.      | = FINE, MEASUREMENT                  |
| 37.      | = FINE, MEASUREMENT                  |
| 38.      | = FINE, MEASUREMENT                  |
| 39.      | = FINE, MEASUREMENT                  |
| 40.      | = FINE, MEASUREMENT                  |
| 41.      | = FINE, MEASUREMENT                  |
| 42.      | = FINE, MEASUREMENT                  |
| 43.      | = FINE, MEASUREMENT                  |
| 44.      | = FINE, MEASUREMENT                  |
| 45.      | = FINE, MEASUREMENT                  |
| 46.      | = FINE, MEASUREMENT                  |
| 47.      | = FINE, MEASUREMENT                  |
| 48.      | = FINE, MEASUREMENT                  |
| 49.      | = FINE, MEASUREMENT                  |
| 50.      | = FINE, MEASUREMENT                  |
| 51.      | = FINE, MEASUREMENT                  |
| 52.      | = FINE, MEASUREMENT                  |
| 53.      | = FINE, MEASUREMENT                  |
| 54.      | = FINE, MEASUREMENT                  |
| 55.      | = FINE, MEASUREMENT                  |
| 56.      | = FINE, MEASUREMENT                  |
| 57.      | = FINE, MEASUREMENT                  |
| 58.      | = FINE, MEASUREMENT                  |
| 59.      | = FINE, MEASUREMENT                  |
| 60.      | = FINE, MEASUREMENT                  |
| 61.      | = FINE, MEASUREMENT                  |
| 62.      | = FINE, MEASUREMENT                  |
| 63.      | = FINE, MEASUREMENT                  |
| 64.      | = FINE, MEASUREMENT                  |
| 65.      | = FINE, MEASUREMENT                  |
| 66.      | = FINE, MEASUREMENT                  |
| 67.      | = FINE, MEASUREMENT                  |
| 68.      | = FINE, MEASUREMENT                  |
| 69.      | = FINE, MEASUREMENT                  |
| 70.      | = FINE, MEASUREMENT                  |
| 71.      | = FINE, MEASUREMENT                  |
| 72.      | = FINE, MEASUREMENT                  |
| 73.      | = FINE, MEASUREMENT                  |
| 74.      | = FINE, MEASUREMENT                  |
| 75.      | = FINE, MEASUREMENT                  |
| 76.      | = FINE, MEASUREMENT                  |
| 77.      | = FINE, MEASUREMENT                  |
| 78.      | = FINE, MEASUREMENT                  |
| 79.      | = FINE, MEASUREMENT                  |
| 80.      | = FINE, MEASUREMENT                  |
| 81.      | = FINE, MEASUREMENT                  |
| 82.      | = FINE, MEASUREMENT                  |
| 83.      | = FINE, MEASUREMENT                  |
| 84.      | = FINE, MEASUREMENT                  |
| 85.      | = FINE, MEASUREMENT                  |
| 86.      | = FINE, MEASUREMENT                  |
| 87.      | = FINE, MEASUREMENT                  |
| 88.      | = FINE, MEASUREMENT                  |
| 89.      | = FINE, MEASUREMENT                  |
| 90.      | = FINE, MEASUREMENT                  |
| 91.      | = FINE, MEASUREMENT                  |
| 92.      | = FINE, MEASUREMENT                  |
| 93.      | = FINE, MEASUREMENT                  |
| 94.      | = FINE, MEASUREMENT                  |
| 95.      | = FINE, MEASUREMENT                  |
| 96.      | = FINE, MEASUREMENT                  |
| 97.      | = FINE, MEASUREMENT                  |
| 98.      | = FINE, MEASUREMENT                  |
| 99.      | = FINE, MEASUREMENT                  |
| 100.     | = FINE, MEASUREMENT                  |

- |        |                                       |
|--------|---------------------------------------|
| NAD83  | NORTH AMERICAN VERTICAL DATUM OF 1983 |
| N.F.   | NOT OF FORMERLY                       |
| NDVDZ  | NORTH AMERICAN VERTICAL DATUM OF 1923 |
| NO     | NUMBER                                |
| OP     | OPERATIONAL PLANT                     |
| O.R.   | OFFICIAL RECORD BOOK                  |
| P      | PIKE                                  |
| (P)    | PICT MEASUREMENT                      |
| P.B.   | PICT BOOK                             |
| P.C.   | POINT OF CONSTRUCTION                 |
| P.D.   | POINT OF INTERSECTION                 |
| P.D.B. | POINT OF BEGINNING                    |
| P.F.   | POINT OF TANGENCY                     |
| R      | RADIUS                                |
| RCP    | RECEIVED CORRELATION POINT            |
| RF     | RECEIVED FAKING                       |
| R.H.   | RIGHT HAND HALF                       |
| RSZ    | RECEIVED SOUTH AND EAST - R 3150      |
| S      | SURVEY SENDER MATERIAL                |
| SWH    | SWITCHING MATERIAL                    |
| SW     | SWITCHING MATERIAL                    |
| SW     | SWITCHING MATERIAL                    |
| W.F.   | WETLAND FILL                          |

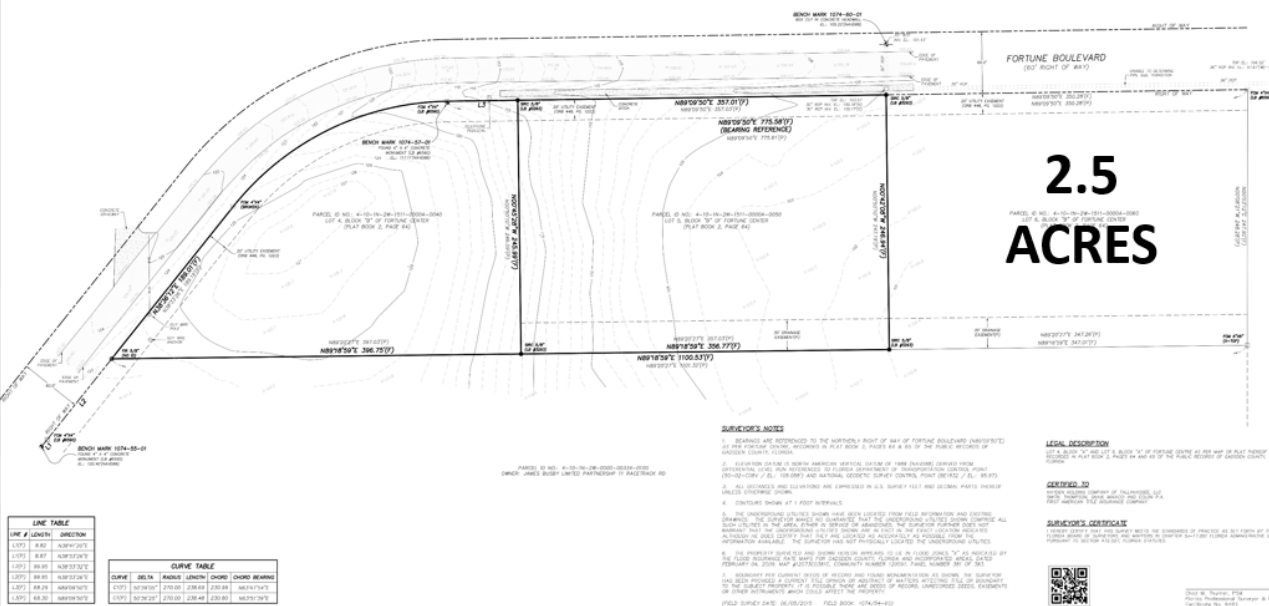
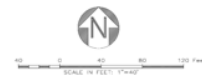
-  AIR CONDITIONER
-  BACKDOOR ACCESSIBLE
-  BONDED WATER
-  BILLBOARD
-  CLEARCUT
-  COMMUNICATIONS WHISTLE
-  ELECTRIC WHISTLE
-  ELECTRIC SURF
-  FLAG POLE
-  FLAMMABLE LIQUID
-  FIRE HYDRANT
-  GAS METER
-  GAS VALVE COVER
-  GENERATOR
-  GUY WIRE ANCHOR
-  HANDICAP PARKING
-  HOSE REEL
-  IRRIGATION CONTROL VALVE

- = LIGHT POLE
- = WARD
- = PARKING COUNT
- = POWER POLE
- = POWER POLE WITH LIGHT
- = POST INDICATOR VALVE
- = SANITARY TOWER MANHOLE
- = SIGNAL CONTROLLER
- = SIGNAL SPAN POLE
- = SINGLE SUPPORT SIGN
- = SPLIT ELEVATION
- = STAND PIPE
- = STORM DRAIN INLET
- = STORM DRAIN MANHOLE
- = TELEPHONE POLE/BOX
- = UTILITY POLE
- = WATER METER
- = WATER VALVE COVER
- = WIRE PULL BOX

- 

- 

- 
- NCCO**  
NOMICS CONSULTING GROUP  
2000 Valley View, Suite 100, Dallas, TX 75230  
(972) 443-8800  
www.nccogroup.com



**NCG**  
**MOBILES COMBATING GROUP, INC.**  
 3540 PEARL AVENUE, TAMPA, FLORIDA, 33609  
 TEL: 800-380-1178 FAX: 800-380-1184 WWW.NCG.COM TIM TAYLOR

PROJECT NAME:	LOTS 4 AND 5, BLOCK "A" FORTUNE CENTRE GADSDEN COUNTY, FLORIDA
CLIENT NAME:	HOLDING COMPANY OF TALLAHASSEE 16725 BUCK LAKE ROAD TALLAHASSEE, FLORIDA 32317

[illegible]

101

# FOR SALE

Fortune Blvd Midway, FL 32343

