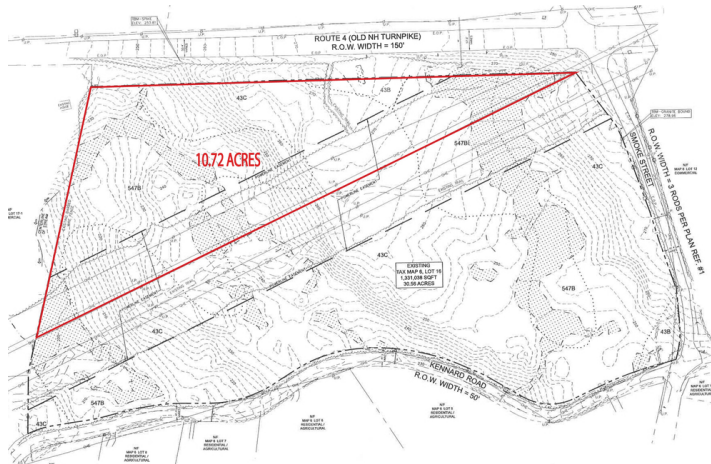


LAND FOR SALE



0 Old Turnpike Road, Nottingham, NH 03290



OFFERING SUMMARY

SALE PRICE:	\$115,000
LOT SIZE:	10.72 Acres
ZONING:	COMM/IND DIST
PRICE / SF:	\$0.25
TRAFFIC COUNT:	8,500

PROPERTY OVERVIEW

This rare to find Commercial/Industrial Land in Nottingham is 10.72 acres with approximately 1,314 feet of frontage on Route 4 and a traffic count of over 8500 cars per day. With so much commercial growth around this area, this is an opportunity to buy land at a really affordable price. don't wait, Build your business now.

PROPERTY HIGHLIGHTS

- 10.72 Acres in Nottingham.
- Zoned Commercial/Industrial.
- Approximately 800F on Route 4.
- 8500 Cars per Day.

DEMOGRAPHICS

	1 MILE	5 MILES	10 MILES
TOTAL HOUSEHOLDS	125	5,142	22,328
TOTAL POPULATION	342	13,065	60,650
AVERAGE HH INCOME	\$102,835	\$87,776	\$87,230

KELLER WILLIAMS COASTAL REALTY
603.610.8500
750 Lafayette Rd.,
Suite 201 - Coastal Land & Commercial Group
Portsmouth, NH 03801

DAVE GARVEY
Managing Director
O: 603.610.8523
C: 603.491.2854
davegarvey@kwcommercial.com
NH #004637

ETHAN ASH
Commercial & Investment Specialist, MiCP
O: +16036108500 X1430
C: 603.707.2319
ethan.ash@kw.com
NH #071469

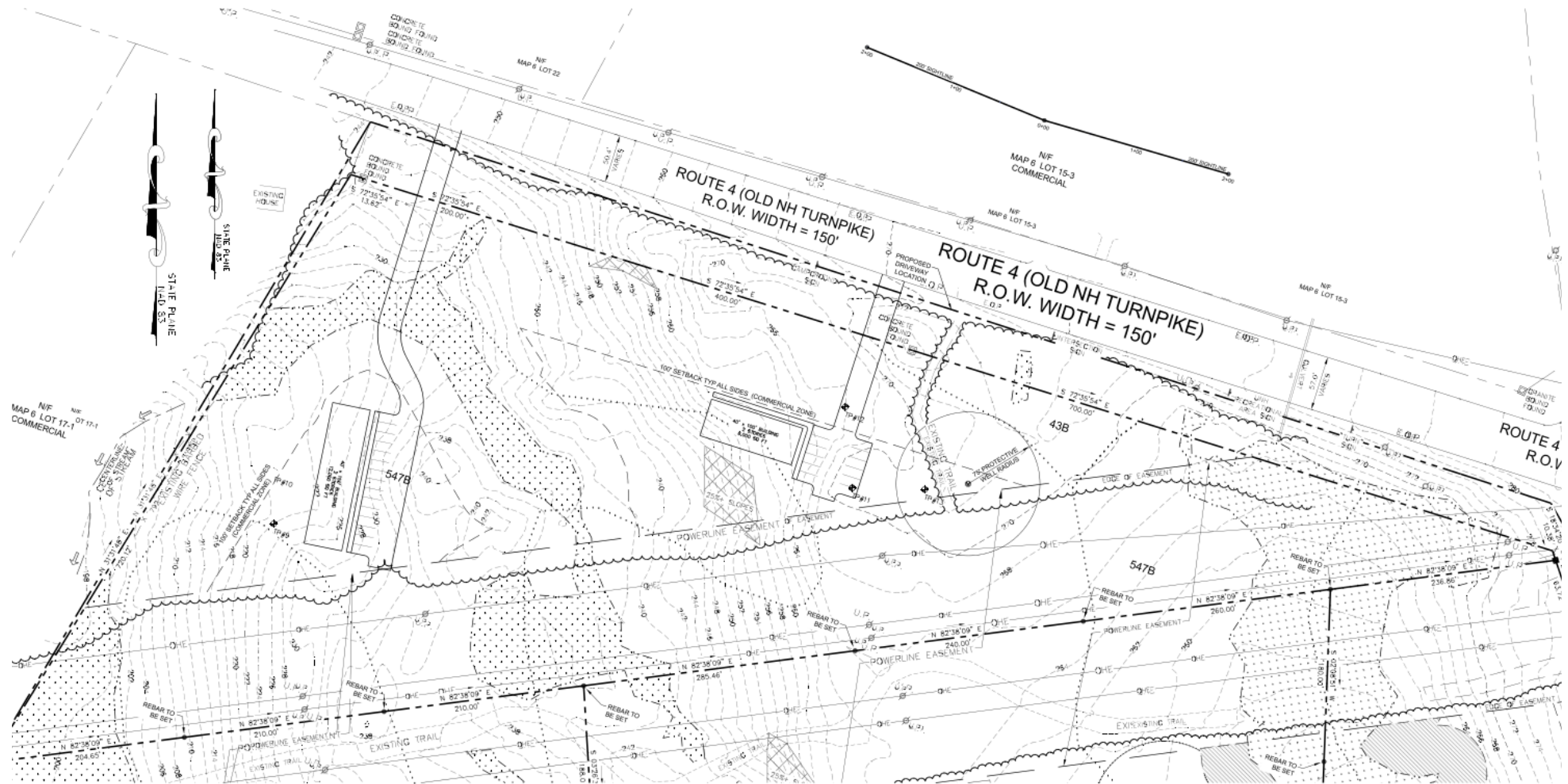
VIKTORIA ALKOVA
Commercial Real Estate Agent, MiCP
O: 603.610.8500
C: 646.577.1194
viktoria@kwclcg.com
NH #074657

Each Office Independently Owned and Operated kwclcg.com

We obtained the information above from sources we believe to be reliable. However, we have not verified its accuracy and make no guarantee, warranty or representation about it. It is submitted subject to the possibility of errors, omissions, change of price, rental or other conditions, prior sale, lease or financing, or withdrawal without notice. We include projections, opinions, assumptions or estimates for example only, and they may not represent current or future performance of the property. You and your tax and legal advisors should conduct your own investigation of the property and transaction.

LAND FOR SALE

0 Old Turnpike Road, Nottingham, NH 03290



KELLER WILLIAMS COASTAL REALTY
603.610.8500
750 Lafayette Rd.,
Suite 201 - Coastal Land & Commercial Group
Portsmouth, NH 03801

DAVE GARVEY
Managing Director
O: 603.610.8523
C: 603.491.2854
davegarvey@kwcommercial.com
NH #004637

ETHAN ASH
Commercial & Investment Specialist, MiCP
O: +16036108500 X1430
C: 603.707.2319
ethan.ash@kw.com
NH #071469

VIKTORIA ALKOVA
Commercial Real Estate Agent, MiCP
O: 603.610.8500
C: 646.577.1194
viktoria@kwclcg.com
NH #074657

Each Office Independently Owned and Operated kwclcg.com

We obtained the information above from sources we believe to be reliable. However, we have not verified its accuracy and make no guarantee, warranty or representation about it. It is submitted subject to the possibility of errors, omissions, change of price, rental or other conditions, prior sale, lease or financing, or withdrawal without notice. We include projections, opinions, assumptions or estimates for example only, and they may not represent current or future performance of the property. You and your tax and legal advisors should conduct your own investigation of the property and transaction.

LAND FOR SALE

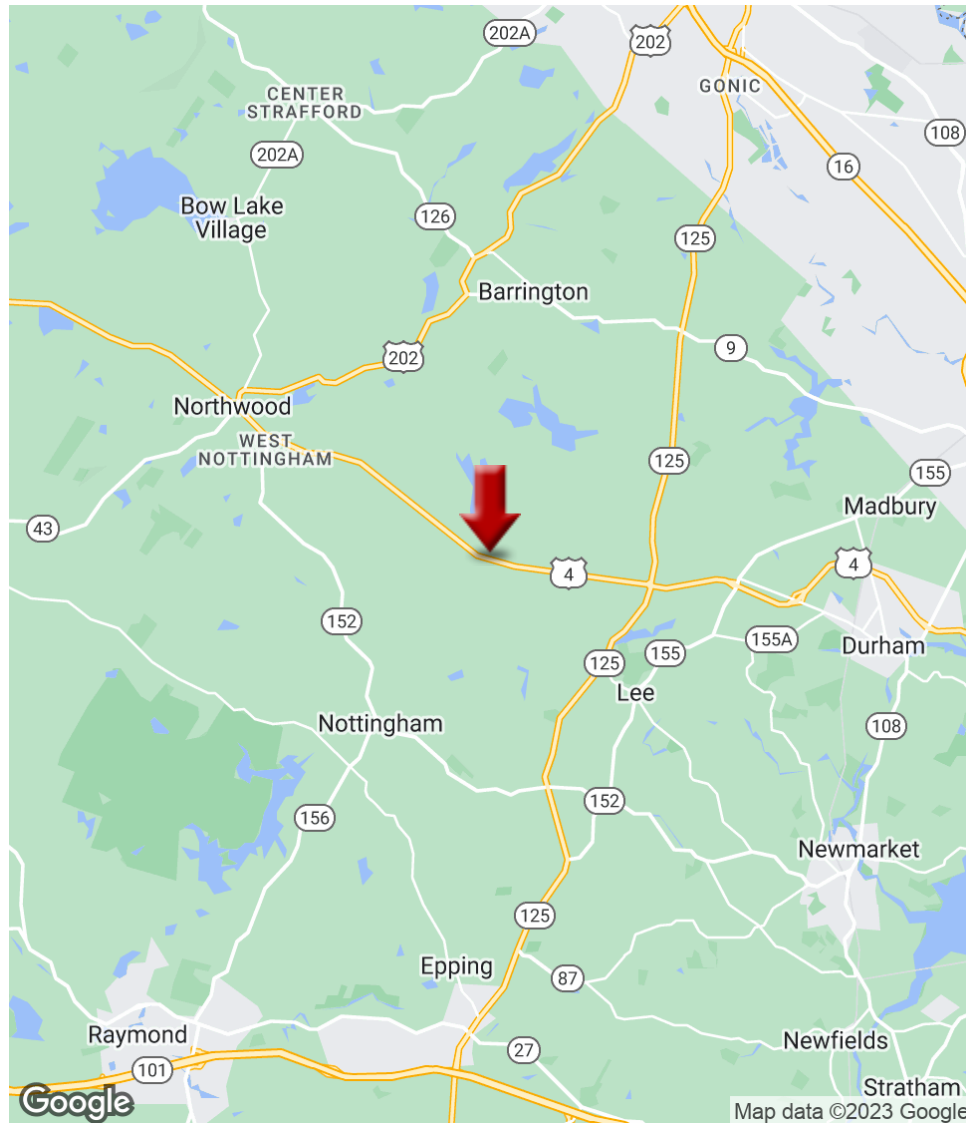
0 Old Turnpike Road, Nottingham, NH 03290



LAND FOR SALE



0 Old Turnpike Road, Nottingham, NH 03290



KELLER WILLIAMS COASTAL REALTY
603.610.8500
750 Lafayette Rd.,
Suite 201 - Coastal Land & Commercial Group
Portsmouth, NH 03801

DAVE GARVEY
Managing Director
O: 603.610.8523
C: 603.491.2854
davegarvey@kwcommercial.com
NH #004637

ETHAN ASH
Commercial & Investment Specialist, MiCP
O: +16036108500 X1430
C: 603.707.2319
ethan.ash@kw.com
NH #071469

VIKTORIA ALKOVA
Commercial Real Estate Agent, MiCP
O: 603.610.8500
C: 646.577.1194
viktoria@kwclcg.com
NH #074657

Each Office Independently Owned and Operated kwclcg.com

We obtained the information above from sources we believe to be reliable. However, we have not verified its accuracy and make no guarantee, warranty or representation about it. It is submitted subject to the possibility of errors, omissions, change of price, rental or other conditions, prior sale, lease or financing, or withdrawal without notice. We include projections, opinions, assumptions or estimates for example only, and they may not represent current or future performance of the property. You and your tax and legal advisors should conduct your own investigation of the property and transaction.

DEMOGRAPHIC SUMMARY

Old Turnpike Rd, Nottingham, New Hampshire, 03290



Drive time of 10 minutes

KEY FACTS

9,436

Population



3,274

Households

37.4

Median Age

\$69,072

Median Disposable Income

EDUCATION

7%

No High School Diploma



25%

High School Graduate



23%

Some College



45%

Bachelor's/Grad/Prof Degree

INCOME



\$87,873

Median Household Income



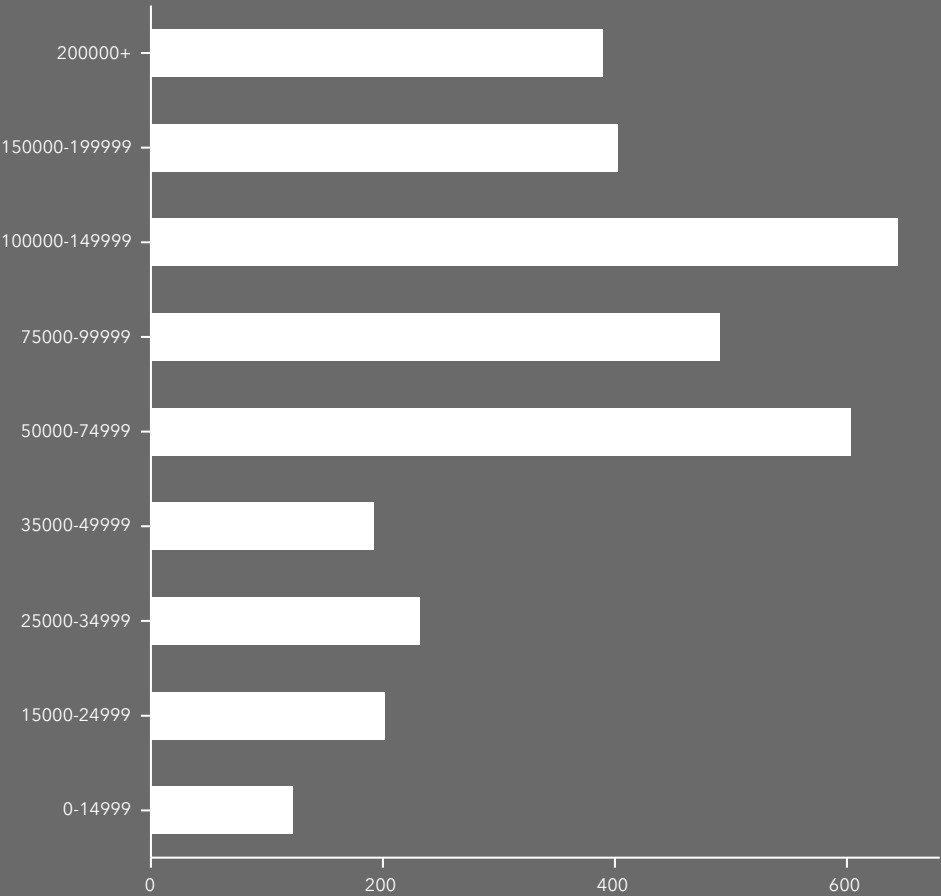
\$39,603

Per Capita Income

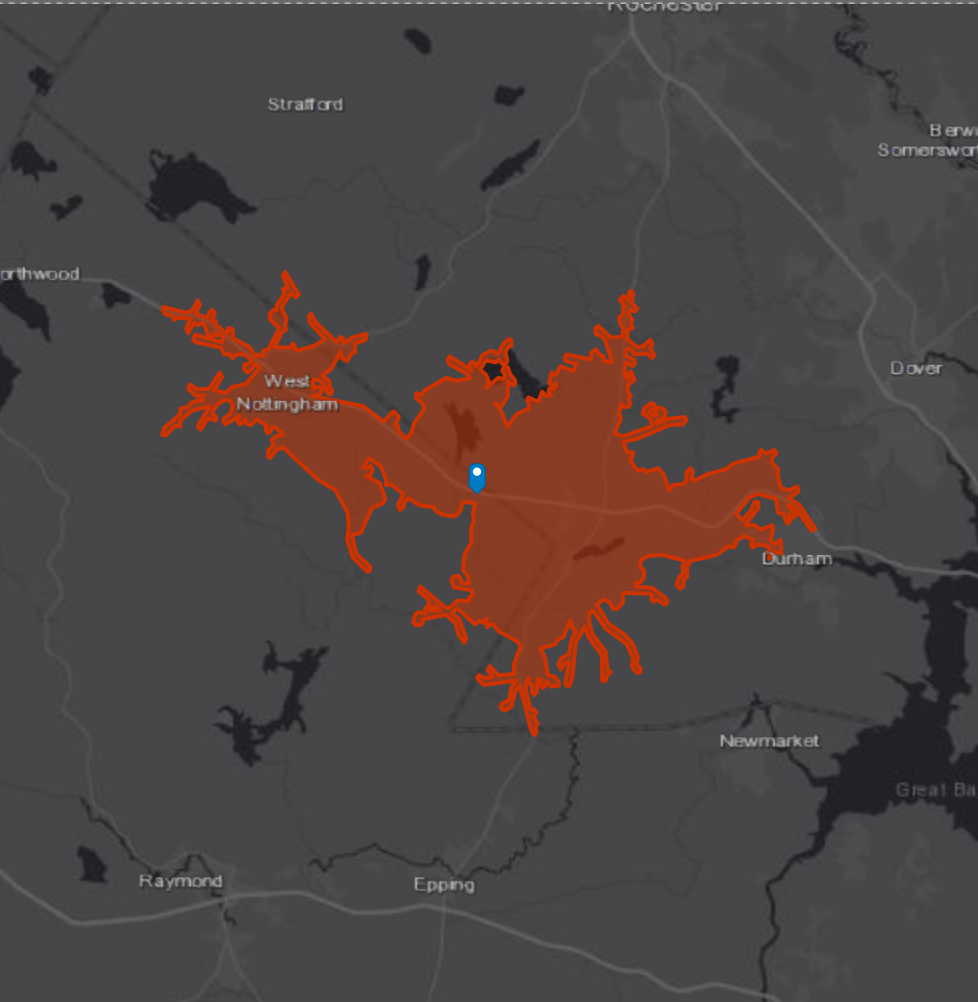


\$327,900

Median Net Worth



HOUSEHOLD INCOME



EMPLOYMENT



69%

White Collar



21%

Blue Collar



10%

Services

2.7%

Unemployment Rate

DEMOGRAPHIC SUMMARY

Old Turnpike Rd, Nottingham, New Hampshire, 03290



Drive time of 20 minutes

KEY FACTS

85,580

Population



32,383

Households

36.4

Median Age

\$63,741

Median Disposable Income

EDUCATION

6%

No High School Diploma



23%

High School Graduate



25%

Some College



46%

Bachelor's/Grad/Prof Degree

INCOME



\$80,465

Median Household Income



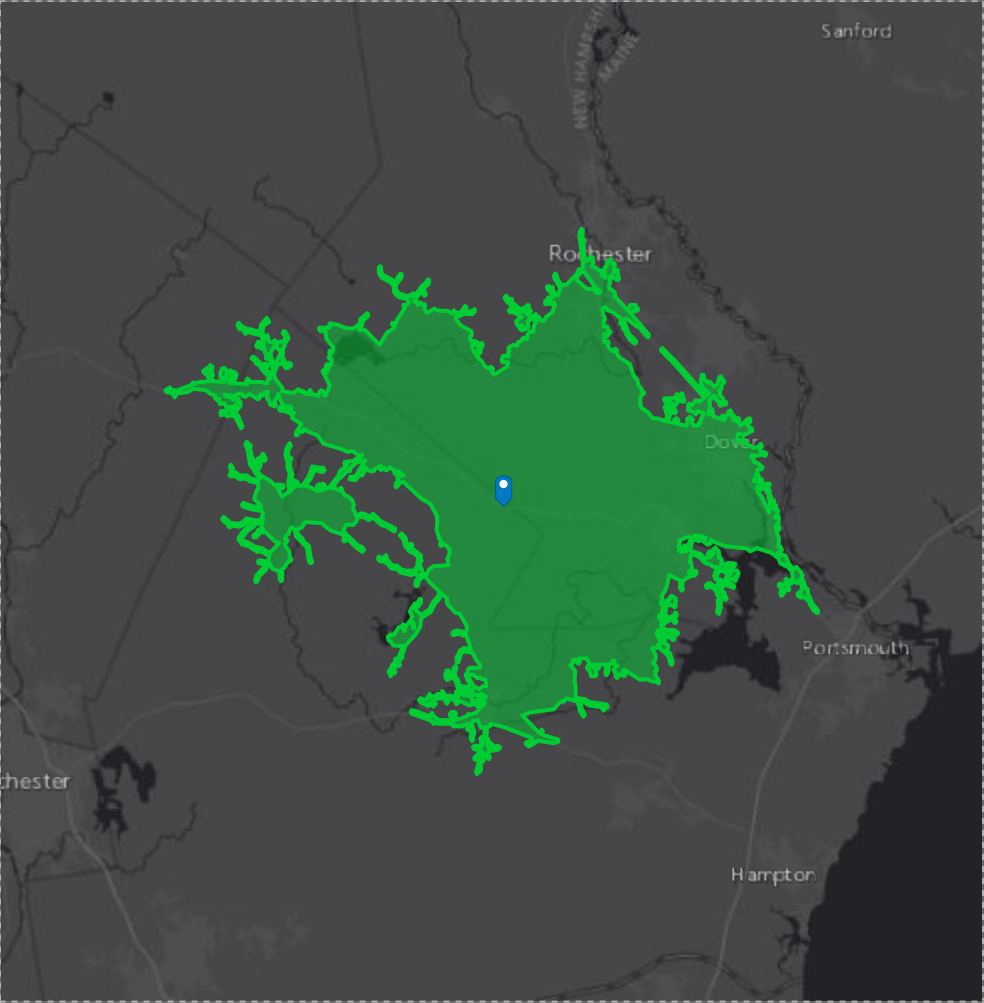
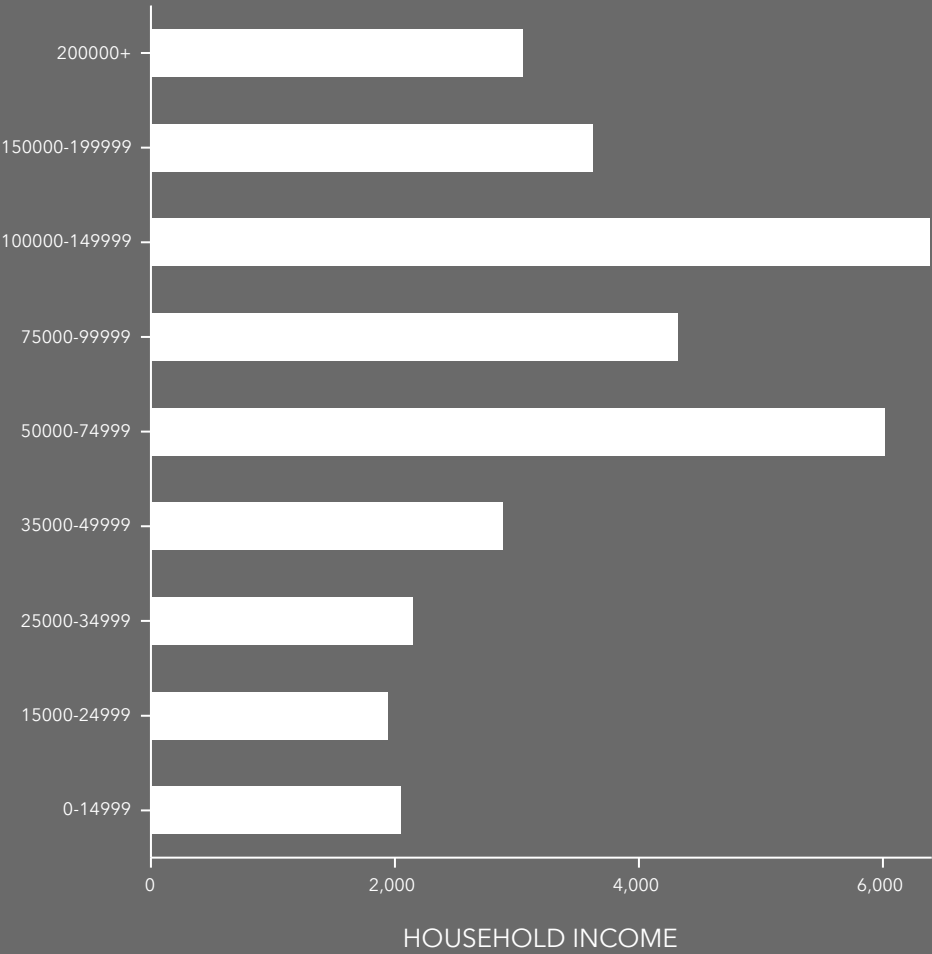
\$39,363

Per Capita Income



\$187,749

Median Net Worth



EMPLOYMENT



70%

White Collar



18%

Blue Collar



11%

Services

3.6%

Unemployment Rate

DEMOGRAPHIC SUMMARY

Old Turnpike Rd, Nottingham, New Hampshire, 03290



Drive time of 30 minutes

KEY FACTS

236,106

Population



93,901

Households

41.0

Median Age

\$62,938

Median Disposable Income

EDUCATION

6%

No High School Diploma



26%

High School Graduate



26%

Some College



42%

Bachelor's/Grad/Prof Degree

INCOME



\$79,598

Median Household Income



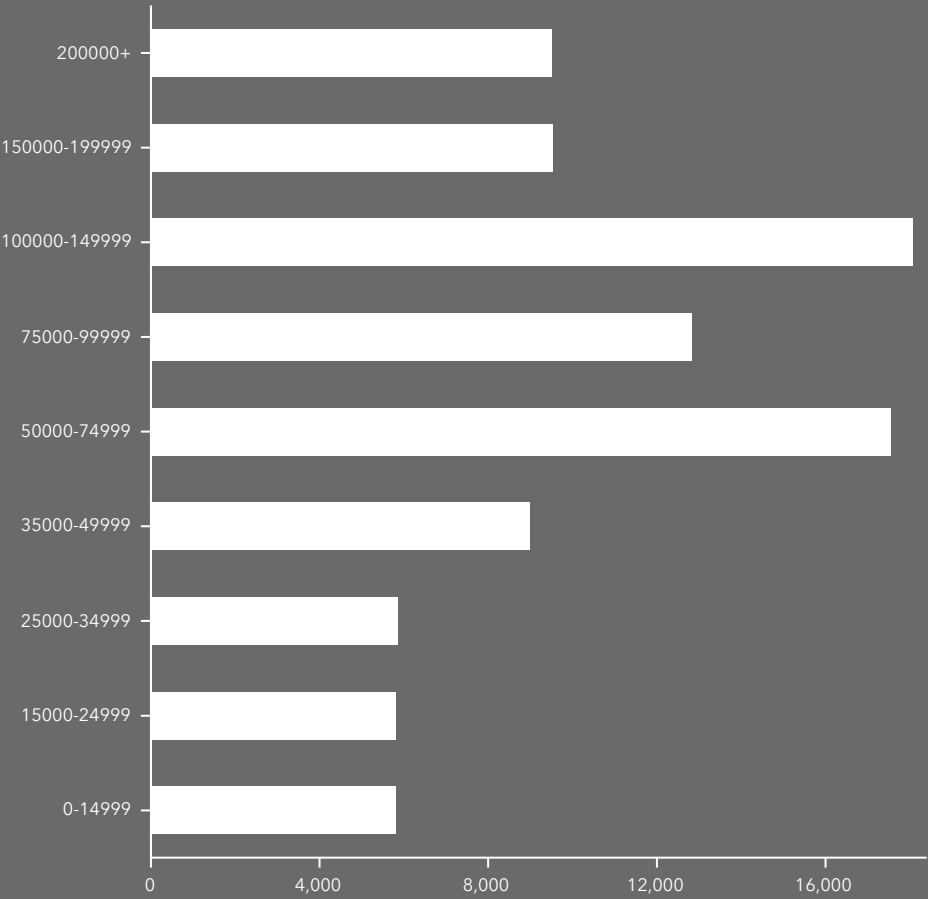
\$41,783

Per Capita Income

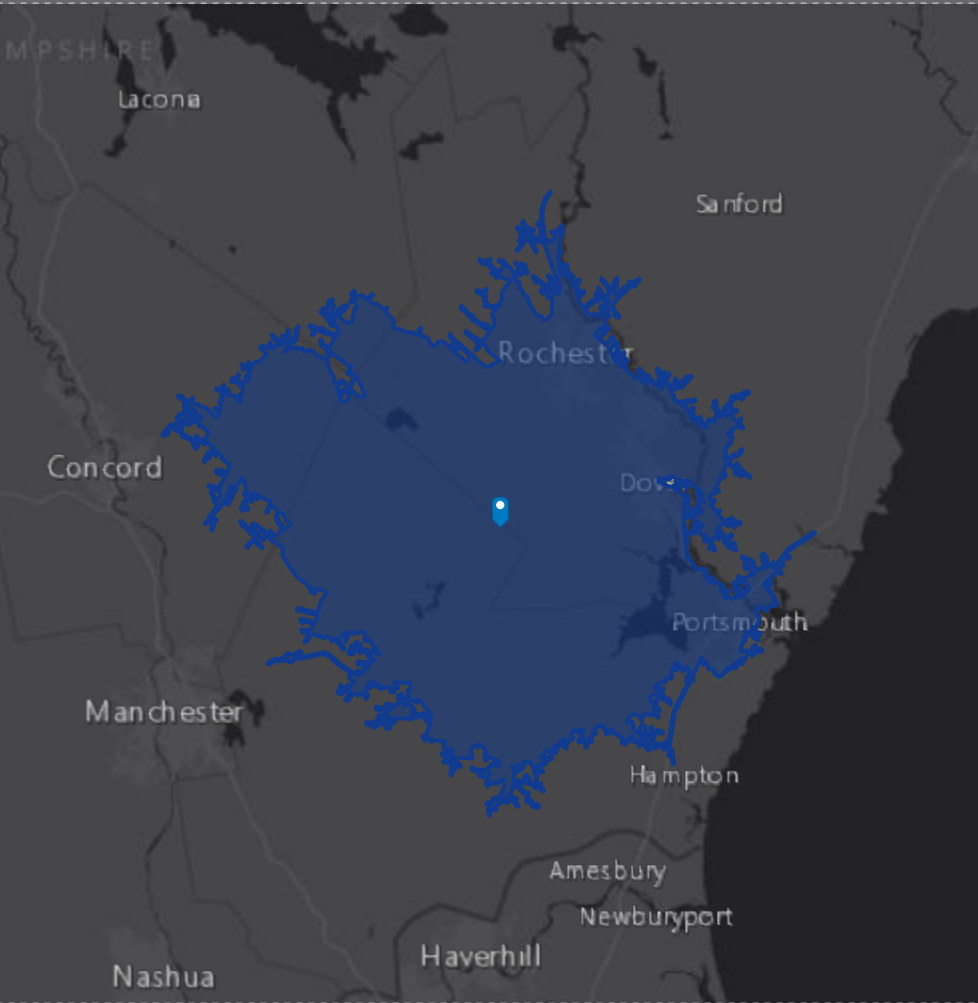


\$208,709

Median Net Worth



HOUSEHOLD INCOME



EMPLOYMENT



70%

White Collar



20%

Blue Collar



Services

10%

3.7%

Unemployment Rate



2016 Industrial Employment



74

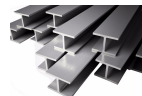
2016 Industrial Businesses



361

2016 Industrial Employees

2016 Employment By Industries



261

Construction



550

Manufacturing



1

Mining



301

Transportation



46

Utilities



182

Wholesale Trade

EMPLOYMENT



69%

White Collar



21%

Blue Collar



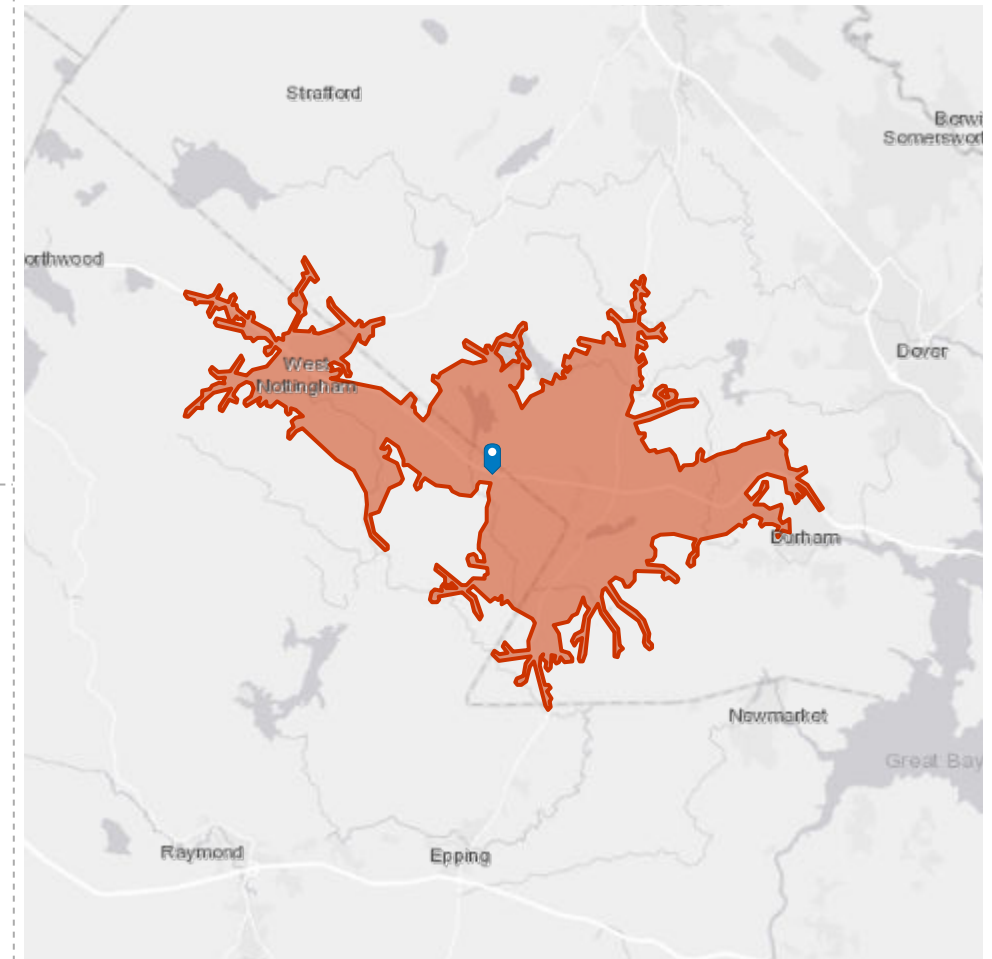
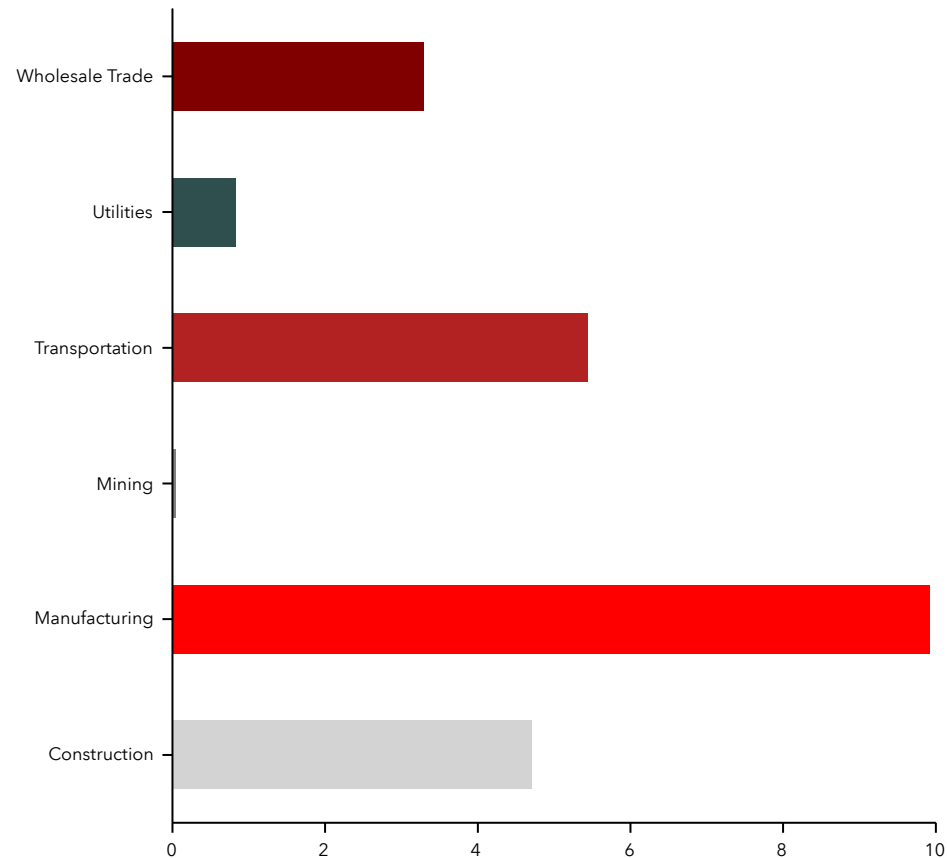
10%

Services

2.7%

Unemployment
Rate

Industrial Businesses by Sector



INCOME



\$87,873

Median Household
Income



\$39,603

Per Capita Income



\$327,900

Median Net Worth



2016 Industrial Employment



641

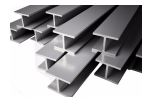
2016 Industrial Businesses



4,593

2016 Industrial Employees

2016 Employment By Industries



2,269
Construction



5,612
Manufacturing



10
Mining



1,500
Transportation



333
Utilities



1,143
Wholesale Trade

EMPLOYMENT



70%

White Collar



18%

Blue Collar



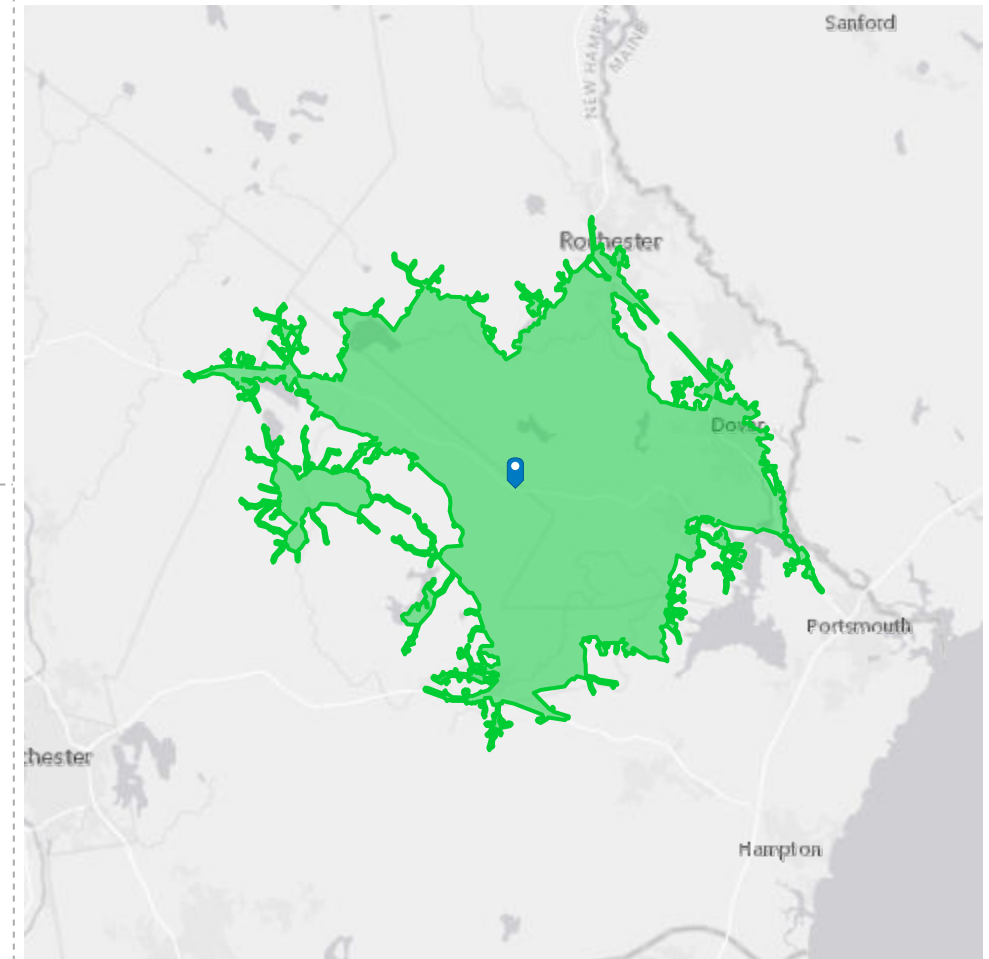
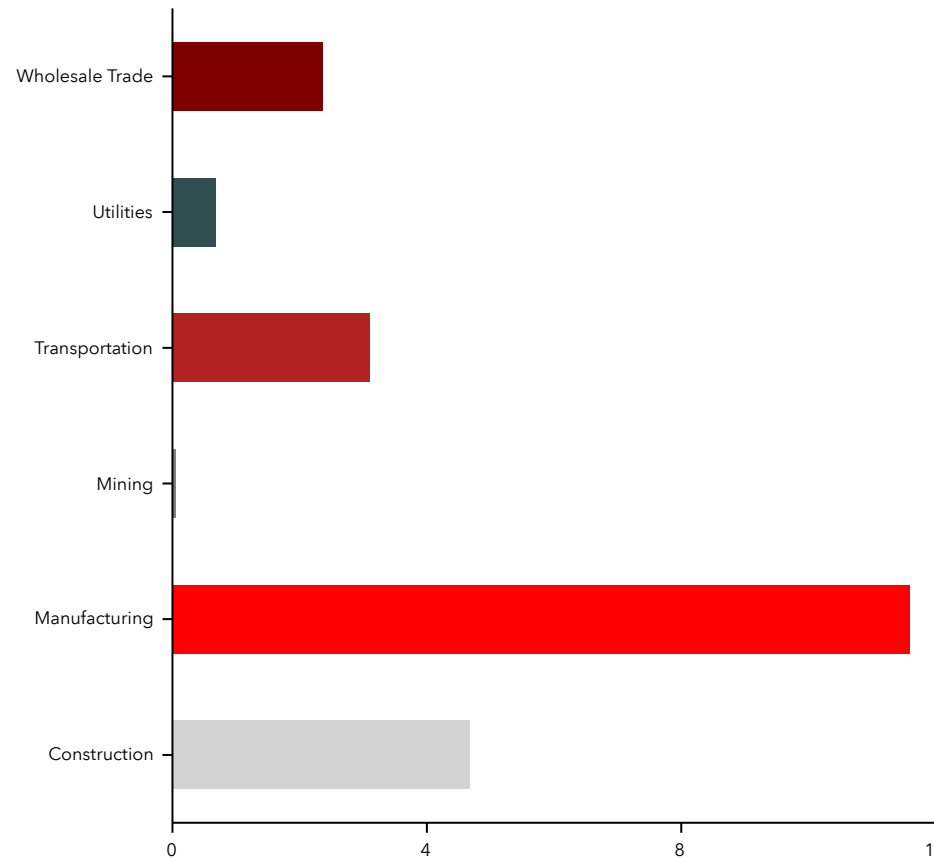
11%

Services

3.6%

Unemployment
Rate

Industrial Businesses by Sector



INCOME



\$80,465
Median Household
Income



\$39,363
Per Capita Income



\$187,749
Median Net Worth



EMPLOYMENT

70%

White Collar

20%

Blue Collar

10%

Services

3.7%
Unemployment
Rate

2016 Industrial Employment



2,157

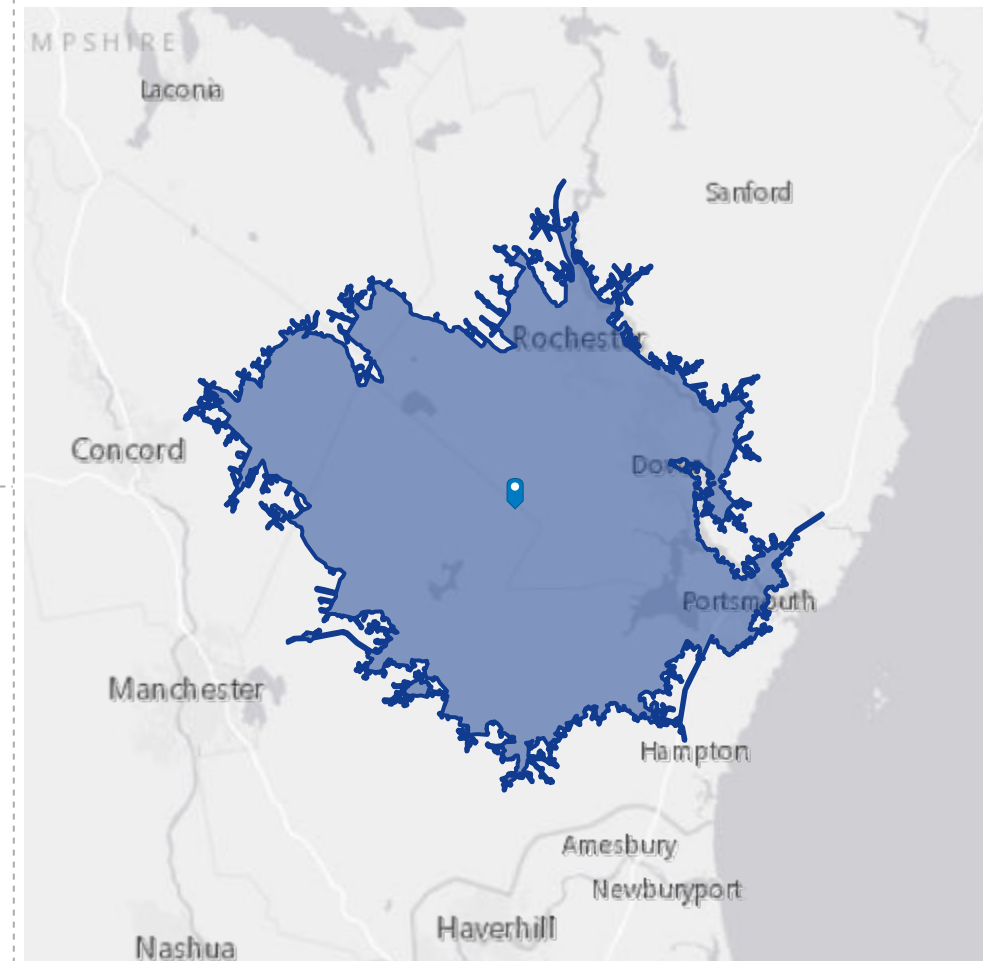
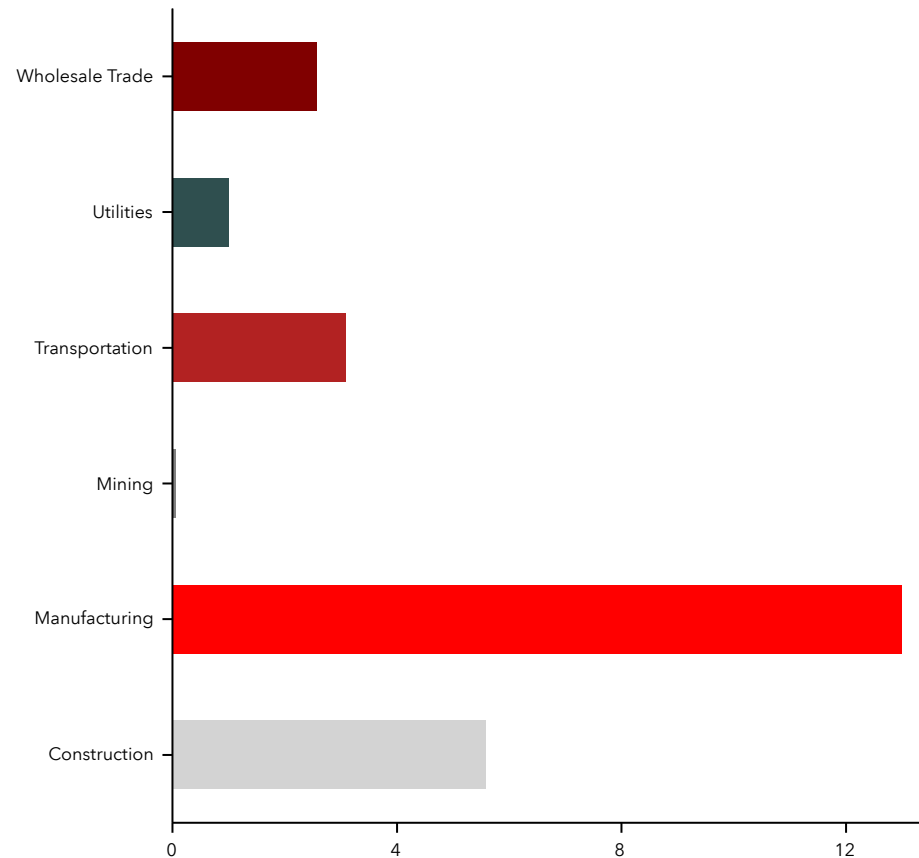
2016 Industrial Businesses



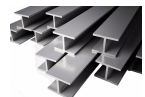
23,053

2016 Industrial Employees

Industrial Businesses by Sector



2016 Employment By Industries



7,211
Construction



16,763
Manufacturing



37
Mining



4,003
Transportation



1,304
Utilities



3,332
Wholesale Trade

INCOME



\$79,598
Median Household
Income



\$41,783
Per Capita Income



\$208,709
Median Net Worth