



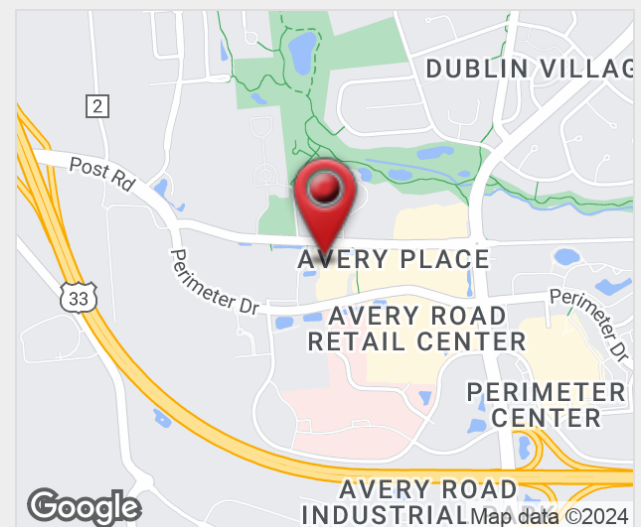
Perimeter MOB

6670 Perimeter Drive, Dublin, Ohio 43016

Property Features

- Two-Story, Class "A" Medical Office Building
- Prime Location Adjacent to OhioHealth Dublin Methodist Hospital
- Second Floor Suite Available
- Suite 255 | 1,153 SF Shell Space
- Covered Patient Drop Off/Pick Up at Front Entrance
- Ample Parking (5:1,000 SF Ratio)
- Close Proximity to Numerous Amenities
- Convenient Access to SR-33, SR-161, and I-270

Lease Rate: Negotiable
www.PerimeterMOB.Com



For more information:

Philip Bird, SIOR

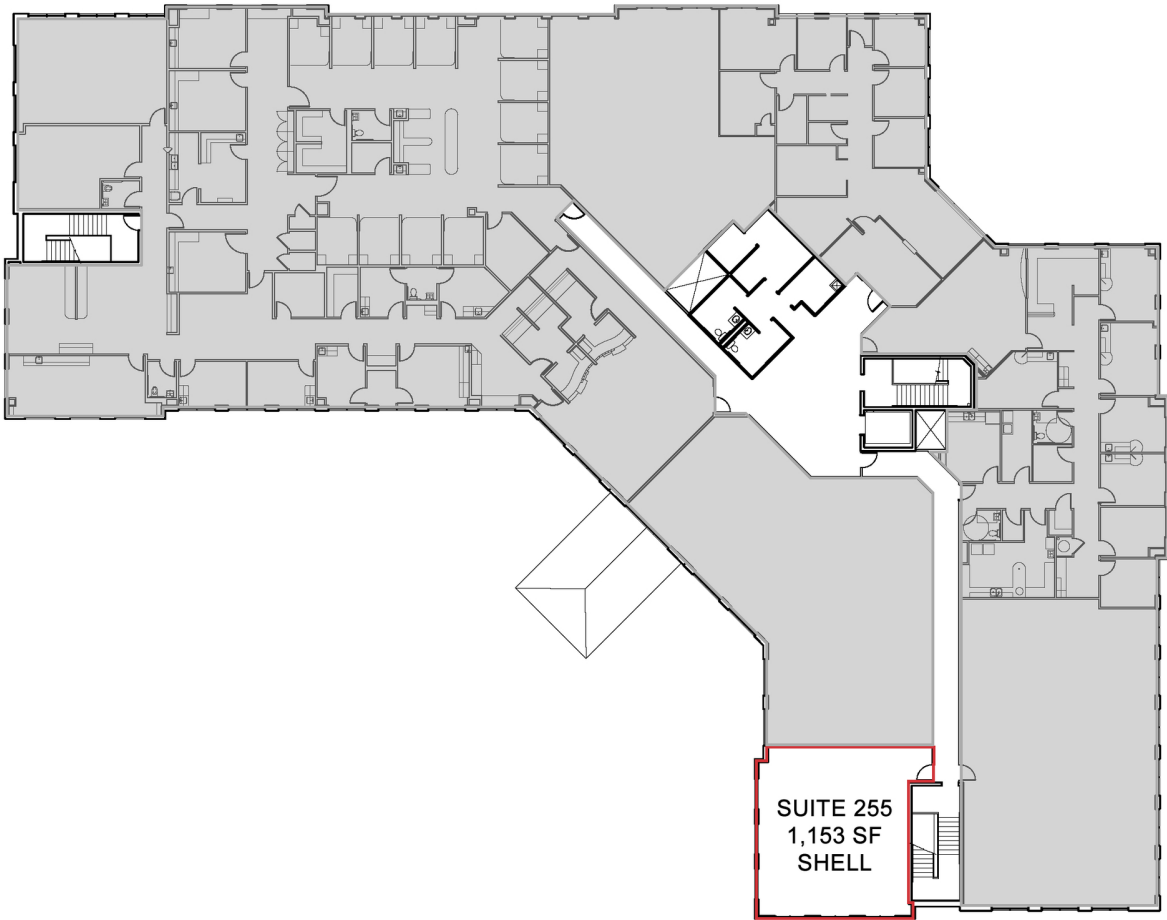
614 629 5296 • pbird@ohioequities.com

Matt Gregory, SIOR, CCIM

614 629 5234 • mgregory@ohioequities.com

Andy Dutcher, SIOR

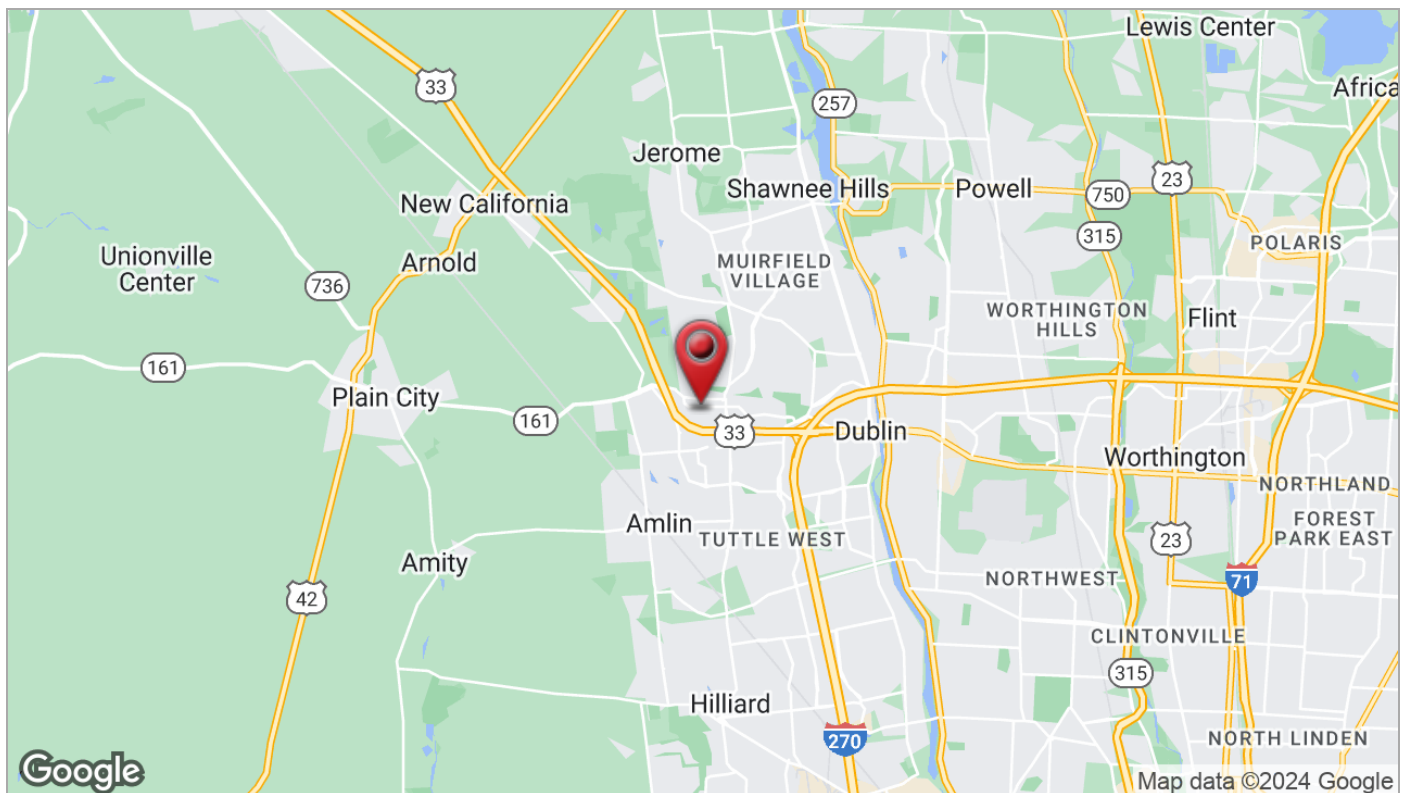
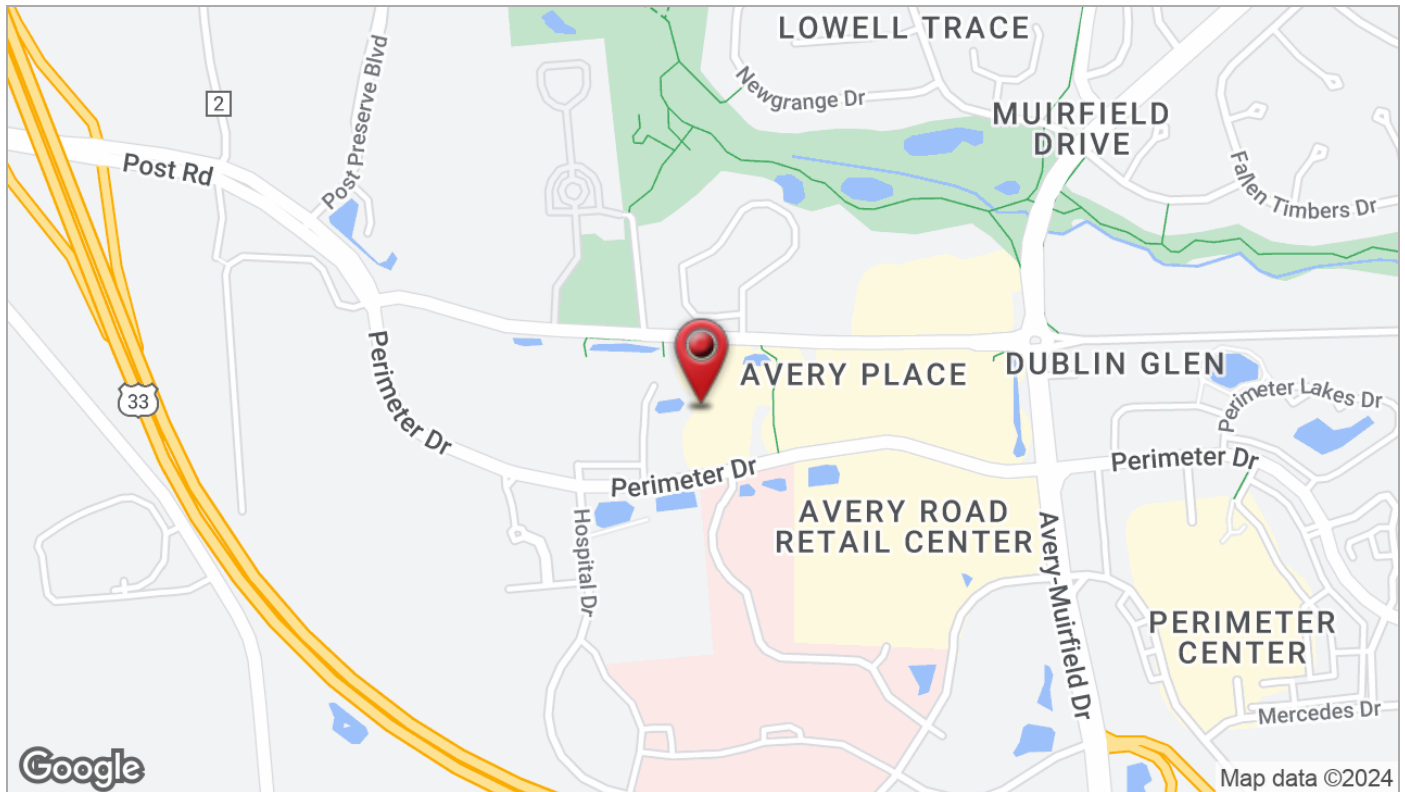
614 629 5266 • adutcher@ohioequities.com

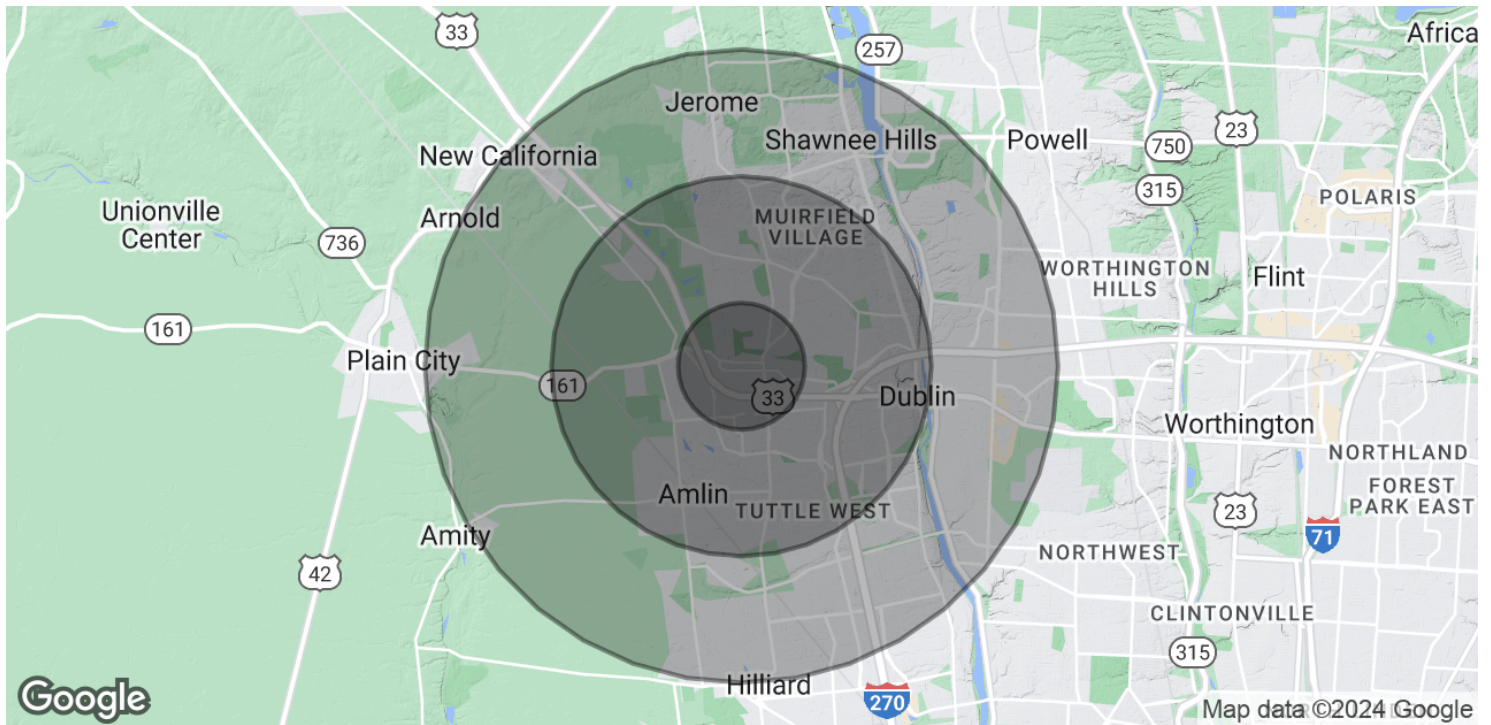


SPACE	SPACE USE	LEASE RATE	LEASE TYPE	SIZE (SF)	AVAILABILITY
255	Medical	NEGOTIABLE	NNN	1,153 SF	VACANT SHELL









POPULATION

	1 MILE	3 MILES	5 MILES
Total Population	5,655	37,900	98,392
Average Age	35.9	35.8	35.7
Average Age (Male)	34.7	35.2	34.9
Average Age (Female)	36.6	36.1	36.3

HOUSEHOLDS & INCOME

	1 MILE	3 MILES	5 MILES
Total Households	2,023	14,275	37,868
# of Persons per HH	2.8	2.7	2.6
Average HH Income	\$121,937	\$117,863	\$110,516
Average House Value	\$279,491	\$323,300	\$345,337

* Demographic data derived from 2020 ACS - US Census