

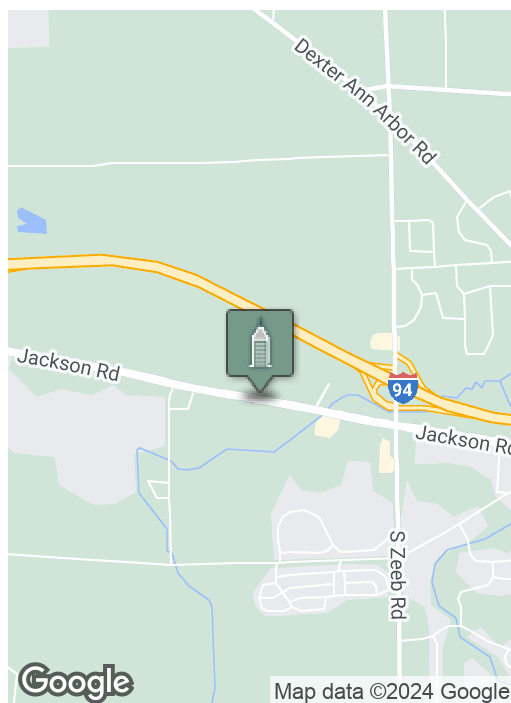
Retail Showroom and Warehouse

6071 JACKSON, ANN ARBOR, MI 48103



Swisher
COMMERCIAL

FOR LEASE



SUMMARY

Entire Building Rate (18,246 SF):	\$9.25 SF/yr NNN
Retail Showroom Rate (8,600 SF):	\$12.50 SF/yr NNN
Estimated NNN:	\$1.50 - \$2.00 PSF
Zoning:	C2 - General Commercial

PROPERTY OVERVIEW

Large showroom and warehouse on Jackson Road near Zeeb Road located by major retailers, commercial, office, and restaurants. High visibility and signage on Jackson Road.

Option 1 Available: 8,600 sf of front showroom with ample parking in front, two (2) offices, restroom, retail counter, enclosed loading docks with one (1) ground level 12' overhead door. Ceiling height is 14' - 16', with a 12'6" clearance, and Geothermal heat & AC in the offices and showroom for \$12.50/sf NNN.

Option 2 Available: All of the 18,246 SF of space including a retail front. The possibilities are endless. Front showroom area has two (2) offices and retail counter. The building has two (2) loading docks (one is enclosed) and one (1) ground level 12' overhead door. Ceiling height is 14' - 16', with a 12'6" clearance. Ample parking in front and rear of building. Geothermal heat & AC in the offices and showroom.

***Building
relationships.***

208 East Washington Street Ann Arbor, MI 48104

734.663.0501

Charlie Koenn

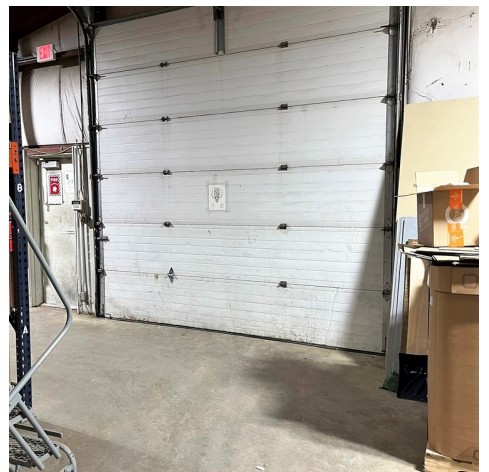
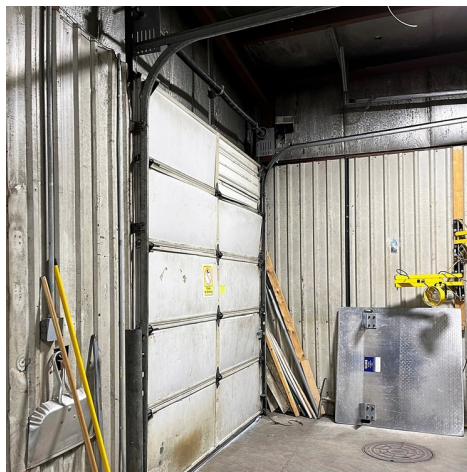
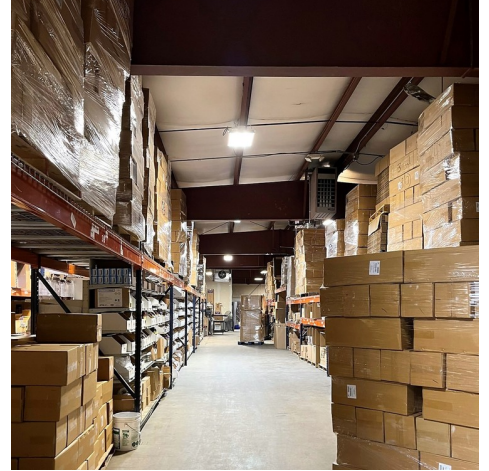
734.926.0230

CKOENN@SWISHERCOMMERCIAL.COM

SWISHERCOMMERCIAL.COM

Retail Showroom and Warehouse for Lease

6071 JACKSON, ANN ARBOR, MI 48103



***Building
relationships.***

208 East Washington Street Ann Arbor, MI 48104

734.663.0501

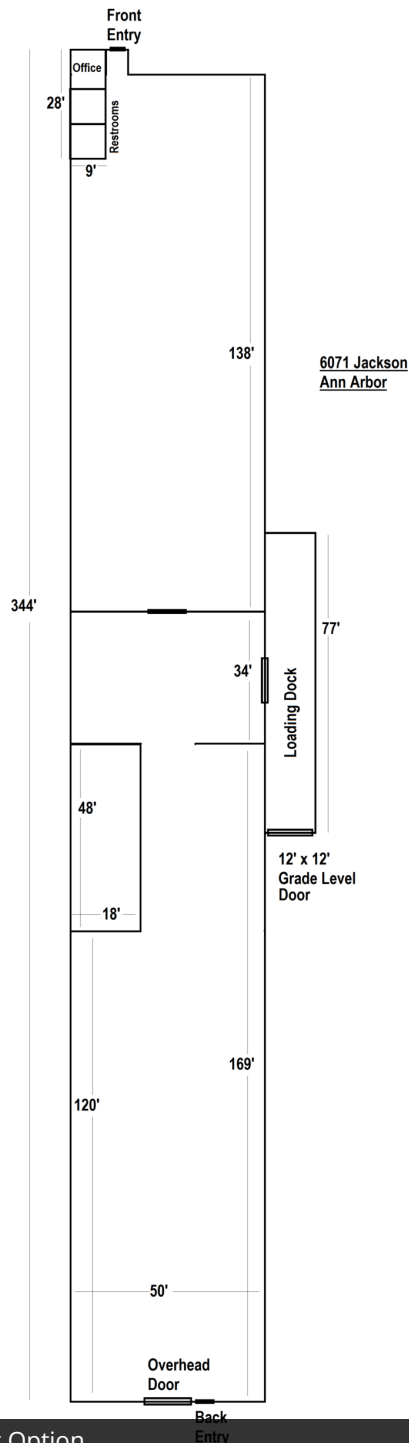
Charlie Koenn

734.926.0230

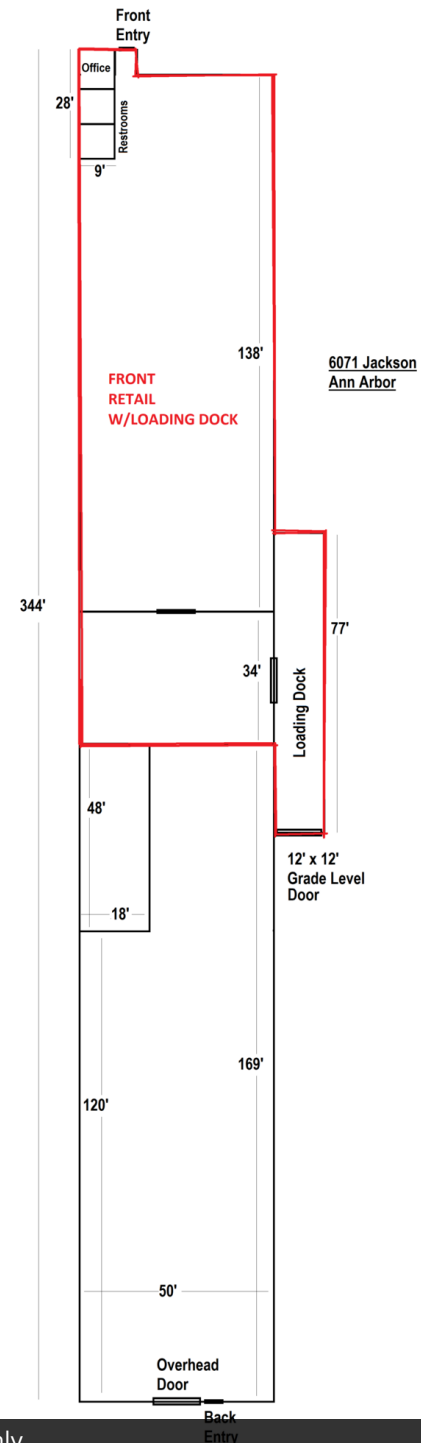
CKOENN@SWISHERCOMMERCIAL.COM

SWISHERCOMMERCIAL.COM

6071 JACKSON, ANN ARBOR, MI 48103



Entire Building Option



Showroom only

***Building
relationships.***

208 East Washington Street Ann Arbor, MI 48104

734.663.0501

Charlie Koenn

734.926.0230

CKOENN@SWISHERCOMMERCIAL.COM

SWISHERCOMMERCIAL.COM

6071 JACKSON, ANN ARBOR, MI 48103



***Building
relationships.***

208 East Washington Street Ann Arbor, MI 48104

734.663.0501

Charlie Koenn

734.926.0230

CKOENN@SWISHERCOMMERCIAL.COM

SWISHERCOMMERCIAL.COM

Retail Showroom and Warehouse for Lease

6071 JACKSON, ANN ARBOR, MI 48103



**Building
relationships.**

208 East Washington Street Ann Arbor, MI 48104

734.663.0501

Charlie Koenn

734.926.0230

CKOENN@SWISHERCOMMERCIAL.COM

SWISHERCOMMERCIAL.COM