

275 US 30, SCHERERVILLE, IN 46375



NORTH ELEVATION

DUNKIN'



For more information, please contact:

BRETT MCDERMOTT

Co-Founder/Senior Vice President
219.864.0200
bmcdermott@latitudeco.com

MYLES RAPCHAK

Principal/Vice President
219.864.0200
mrapchak@latitudeco.com

JOHN O'MALLEY

Associate Broker
219.864.0200
jomalley@latitudeco.com



LATITUDE
COMMERCIAL
REAL ESTATE SERVICES

LATITUDECO.COM

SCHERERVILLE COMMONS

275 US 30, Schererville, IN 46375



EXECUTIVE SUMMARY



NORTH ELEVATION

OFFERING SUMMARY

Available SF: 1,500 - 7,320 SF

Lease Rate: Negotiable

Lot Size: 1.51 Acres

Year Built: 2023

Building Size: 9320 SF

PROPERTY HIGHLIGHTS

- New retail center located in Schererville, IN
- Join Dunkin in their newest location
- Construction to start in 2024
- Space ranges from 1,500 SF and up
- Endcap space available
- Located in one of the strongest retail trade areas in Northwest, IN

DUNKIN'

BRETT MCDERMOTT

Co-Founder/Senior Vice President
219.864.0200
bmcdermott@latitudeco.com

MYLES RAPCHAK

Principal/Vice President
219.864.0200
mrapchak@latitudeco.com

JOHN O'MALLEY

Associate Broker
219.864.0200
jomalley@latitudeco.com

SCHERERVILLE COMMONS

275 US 30, Schererville, IN 46375



PROPERTY DESCRIPTION



NORTH ELEVATION

PROPERTY DESCRIPTION

Now leasing Schererville Commons located on US 30 in Schererville, IN. Join Dunkin in their newest location which construction will start on in 2024. The subject property is located on the south side of US 30 just east of Austin Avenue next to Dairy Queen. The property sits in front of a 130 unit Senior Living Community. Great opportunity to locate in one of the strongest retail trade areas in Northwest, IN. Spaces range from 1,500 SF and up with both inline and endcap space available.

LOCATION DESCRIPTION

The subject property is located on highly traveled US 30 in Schererville, IN

Schererville is a town in St. John Township, Lake County, Indiana. It is part of the Chicago MSA. Long before Indiana became a state, long before the founding of Schererville, people called this place the "Crossroads." Many residents of Schererville commute to work in downtown Chicago due to the city's proximity. Schererville is home to one of Northwest Indiana's premiere retail trade areas.

BRETT MCDERMOTT

Co-Founder/Senior Vice President
219.864.0200
bmcdermott@latitudeco.com

MYLES RAPCHAK

Principal/Vice President
219.864.0200
mrapchak@latitudeco.com

JOHN O'MALLEY

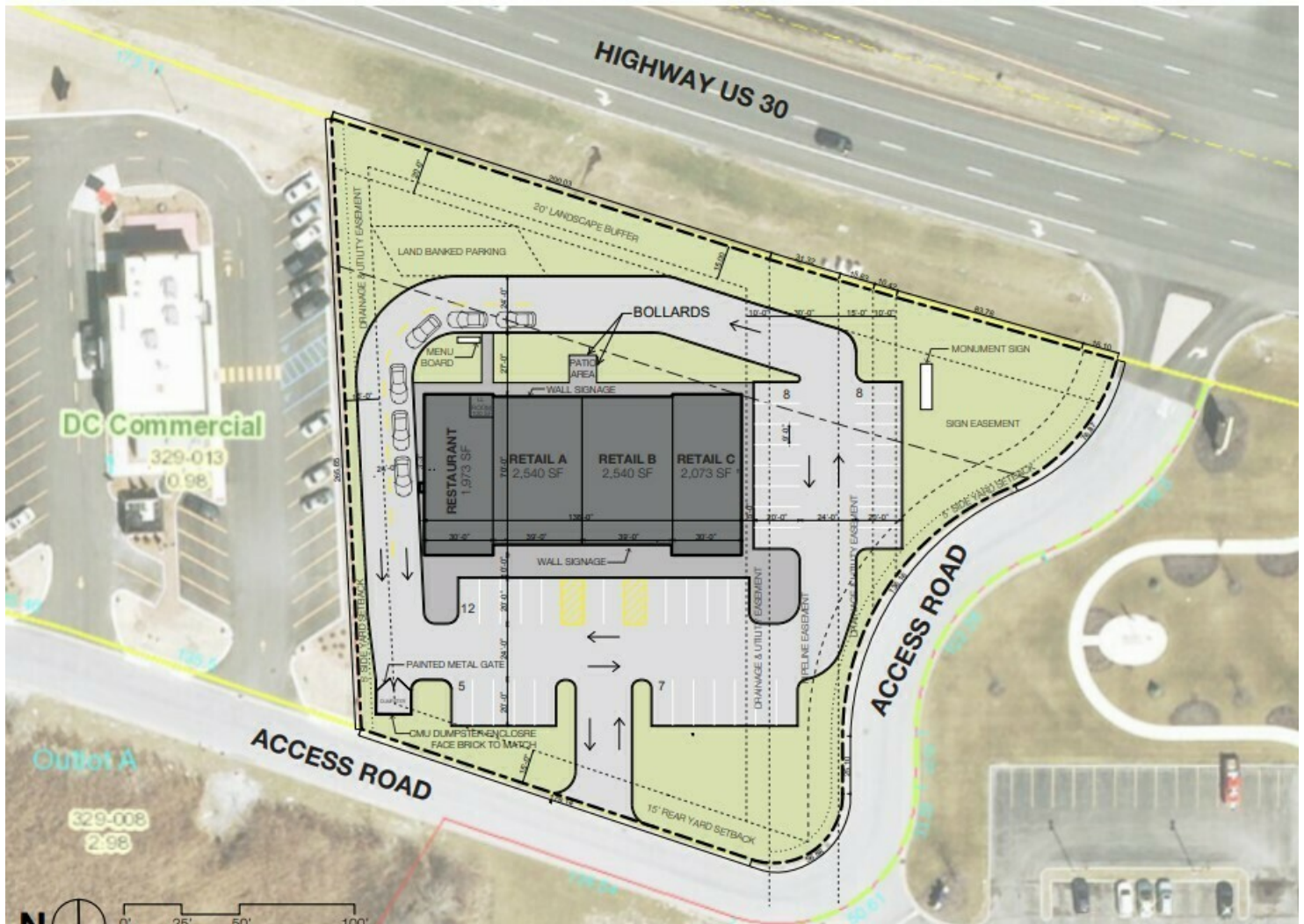
Associate Broker
219.864.0200
jomalley@latitudeco.com

SCHERERVILLE COMMONS

275 US 30, Schererville, IN 46375



SITE PLAN



BRETT MCDERMOTT

Co-Founder/Senior Vice President
219.864.0200
bmcdermott@latitudeco.com

MYLES RAPCHAK

Principal/Vice President
219.864.0200
mrapchak@latitudeco.com

JOHN O'MALLEY

Associate Broker
219.864.0200
jomalley@latitudeco.com

SCHERERVILLE COMMONS

275 US 30, Schererville, IN 46375



RETAILER MAP



Imagery ©2022 , CNES / Airbus, IndianaMap Framework Data, Landsat / Copernicus, Maxar Technologies, U.S. Geological Survey, USDA/FPAC/GEO

BRETT MCDERMOTT

Co-Founder/Senior Vice President
219.864.0200
bmcdermott@latitudeco.com

MYLES RAPCHAK

Principal/Vice President
219.864.0200
mrachak@latitudeco.com

JOHN O'MALLEY

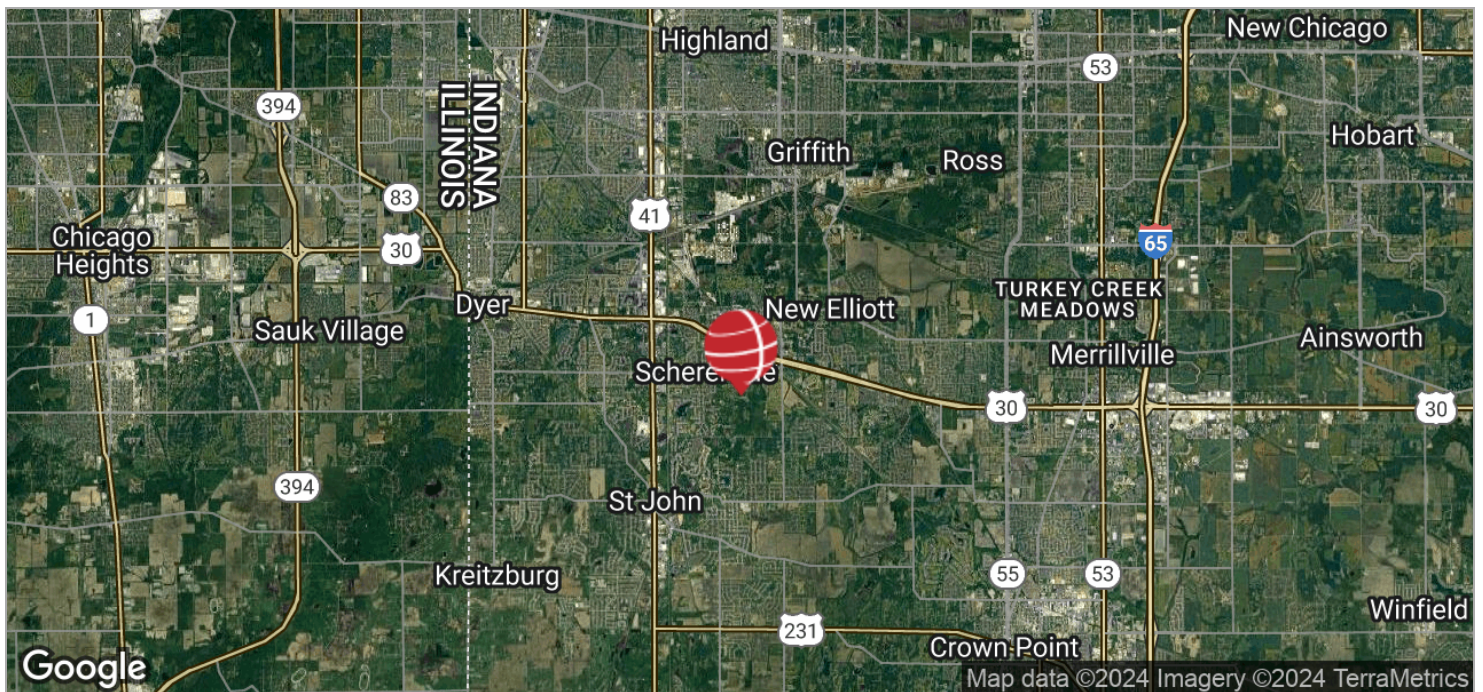
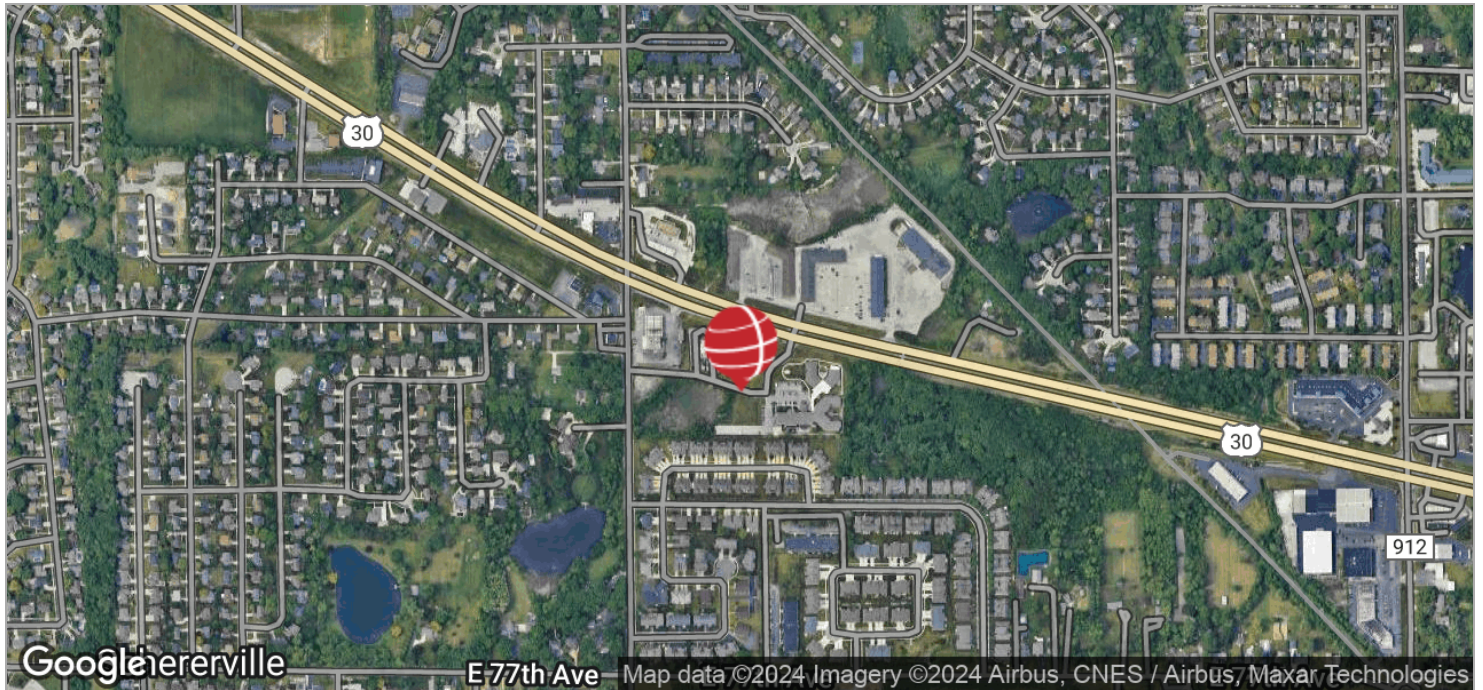
Associate Broker
219.864.0200
jomalley@latitudeco.com

SCHERERVILLE COMMONS

275 US 30, Schererville, IN 46375



LOCATION MAPS



BRETT MCDERMOTT

Co-Founder/Senior Vice President
219.864.0200
bmcdermott@latitudeco.com

MYLES RAPCHAK

Principal/Vice President
219.864.0200
mrachak@latitudeco.com

JOHN O'MALLEY

Associate Broker
219.864.0200
jomalley@latitudeco.com

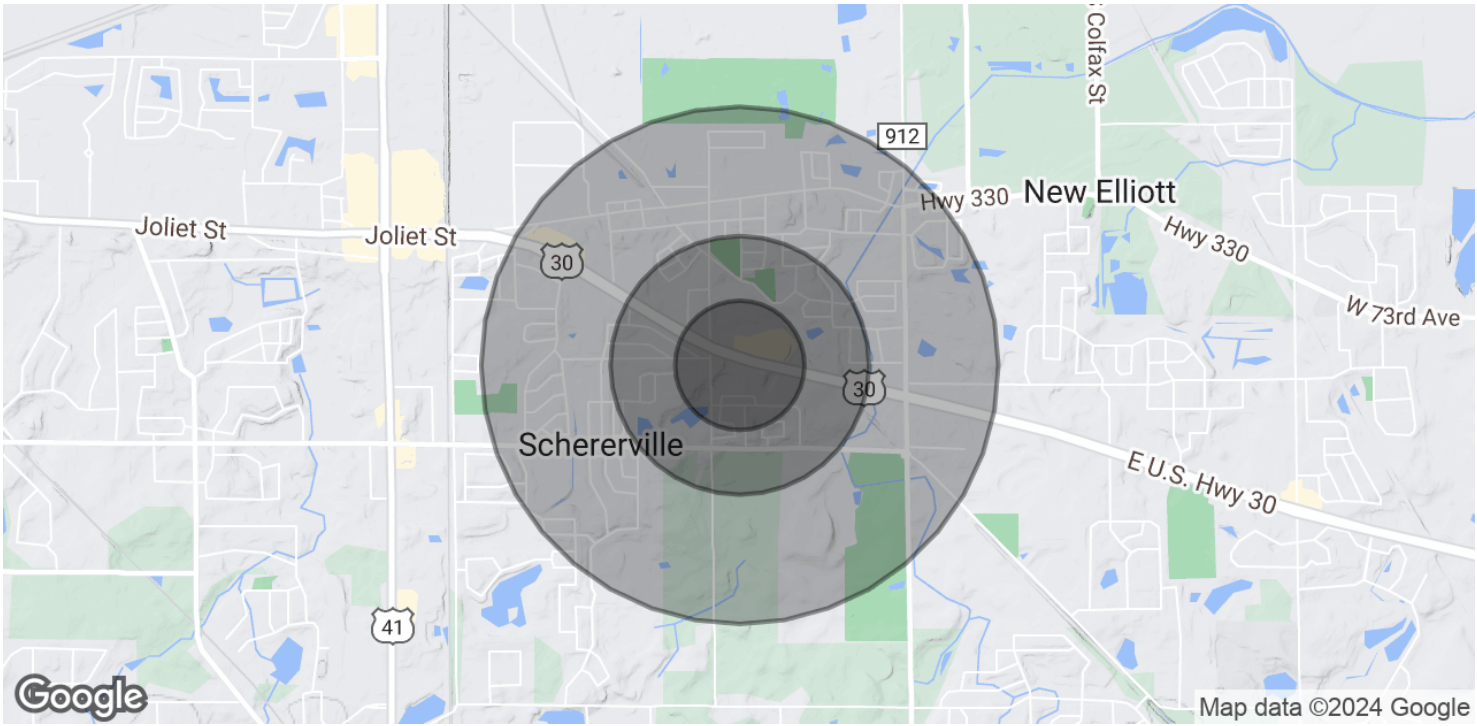
• 6 •
LATITUDECO.COM

SCHERERVILLE COMMONS

275 US 30, Schererville, IN 46375



DEMOGRAPHICS MAP & REPORT



POPULATION

	0.25 MILES	0.5 MILES	1 MILE
Total Population	565	1,959	7,085
Average Age	47.6	44.6	42.4
Average Age (Male)	48.2	45.0	41.6
Average Age (Female)	48.4	45.5	43.7

HOUSEHOLDS & INCOME

	0.25 MILES	0.5 MILES	1 MILE
Total Households	249	835	2,920
# of Persons per HH	2.3	2.3	2.4
Average HH Income	\$90,388	\$86,893	\$87,407
Average House Value	\$1,244,026	\$588,419	\$322,620

* Demographic data derived from 2020 ACS - US Census

BRETT MCDERMOTT

Co-Founder/Senior Vice President
219.864.0200
bmcdermott@latitudeco.com

MYLES RAPCHAK

Principal/Vice President
219.864.0200
mrapchak@latitudeco.com

JOHN O'MALLEY

Associate Broker
219.864.0200
jomalley@latitudeco.com