



Harrison Avenue Storefront

811 Harrison Ave Panama City, Florida 32401

Property Highlights

- Historic Downtown Harrison commercial space in business district. Ideal for office, retail, hospitality or medical.

Amenities

- Located adjacent to Historic Downtown Panama City, Bay County Courthouse, Panama City - City Hall, Panama City Marina, Bay High School, Geographic Center of Panama City and Downtown Business District.
- Shell condition post hurricane Michael ready for any desired buildout
- Convenient rear alley access with rollup door for deliveries and drop offs.



Offering Summary

Building Size: 3,070 SF

Available SF:

For More Information

Brent Faison

C: 850 814 4490
brent@talcor.com

Mario Gisbert

C: 850 258 6179
mgisbert@talcor.com



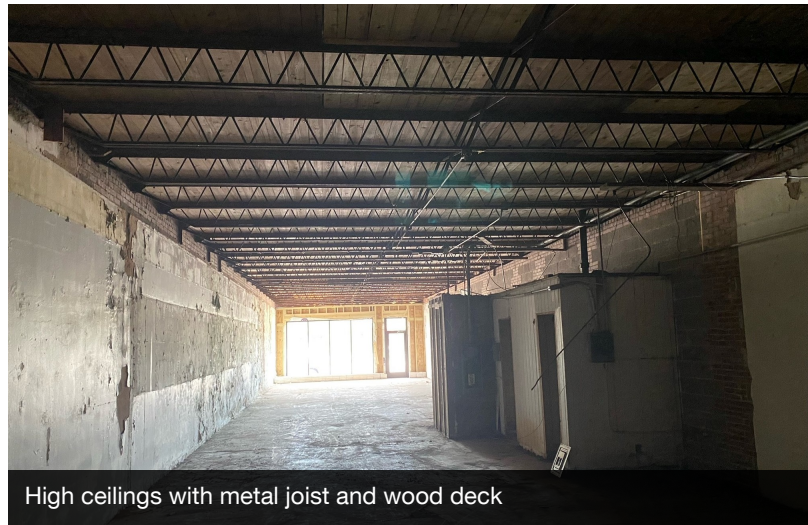
New storefront replaced in 2020



Public sidewalks, street side parking and adjacent private parking



Start fresh with newly cleared floors, walls and ceiling



High ceilings with metal joist and wood deck



Brick walls are exposed and/or covered with stucco, lots of character



Back ally access for deliveries with rollup door

