

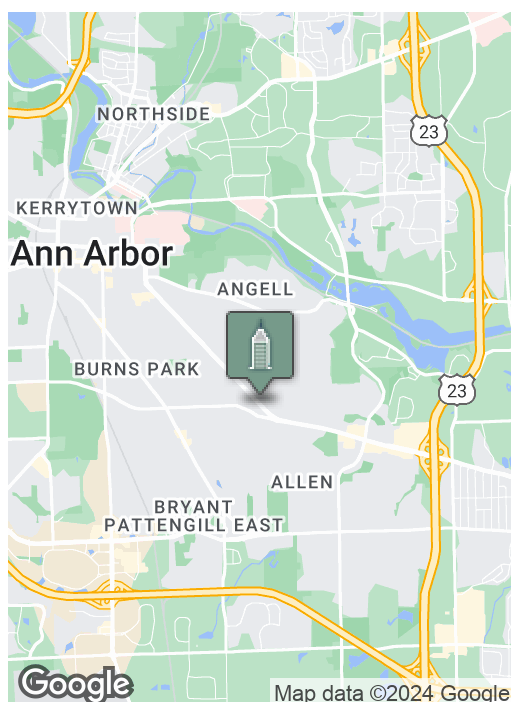
Office Suites

2350 WASHTENAW AVENUE, ANN ARBOR, MI 48104



Swisher
COMMERCIAL

FOR LEASE



SUMMARY

Suite 2

836 SF - \$1,550/mo Gross

Suite 24

620 SF - \$1,200/mo Gross

Zoning:

OFFICE

PROPERTY HIGHLIGHTS

- Wood flooring and thick, sound insulated walls
- Ideal space for therapists or health practitioners
- Located along busy Washtenaw Avenue
- Between downtown Ann Arbor/U of M Campus & Arborland/US-23

***Building
relationships.***

208 East Washington Street Ann Arbor, MI 48104

734.663.0501

Bart Wise

734.358.0354

BARTW@SWISHERCOMMERCIAL.COM

SWISHERCOMMERCIAL.COM

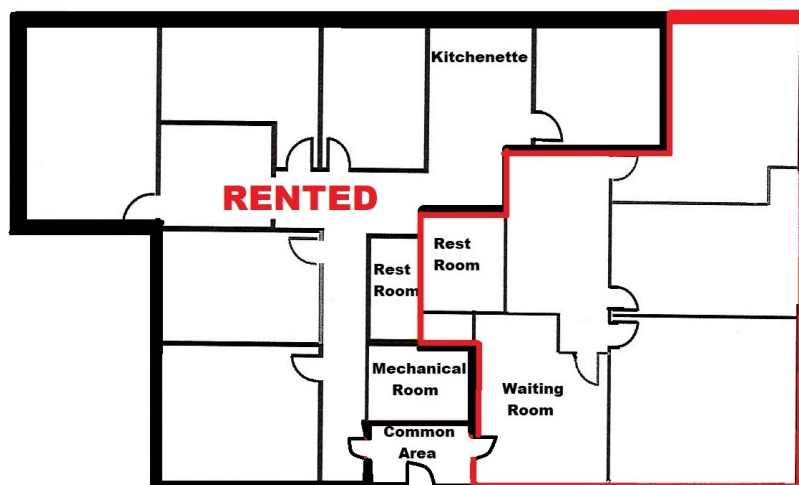
Office Suites for Lease

2350 WASHTENAW AVENUE, ANN ARBOR, MI 48104



2350 Washtenaw Ave. - Ann Arbor

All measurements and dimensions approximate



Suite 2 - 836 SF - \$1,550/mo.



***Building
relationships.***

208 East Washington Street Ann Arbor, MI 48104

734.663.0501

Bart Wise

734.358.0354

BARTW@SWISHERCOMMERCIAL.COM

SWISHERCOMMERCIAL.COM

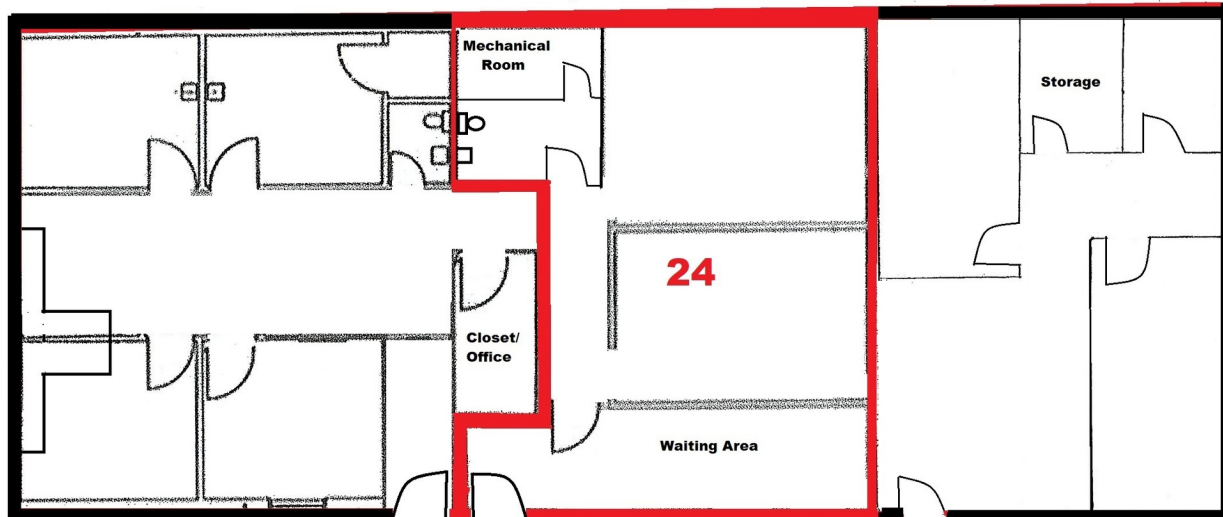
Office Suites for Lease

2350 WASHTENAW AVENUE, ANN ARBOR, MI 48104



2350 Washtenaw Ave. - Ann Arbor

Suite 24 - 620 SF - \$1,200/mo.



***Building
relationships.***

208 East Washington Street Ann Arbor, MI 48104

734.663.0501

Bart Wise

734.358.0354

BARTW@SWISHERCOMMERCIAL.COM

SWISHERCOMMERCIAL.COM

Office Suites for Lease

2350 WASHTENAW AVENUE, ANN ARBOR, MI 48104



**Building
relationships.**

208 East Washington Street Ann Arbor, MI 48104

734.663.0501

Bart Wise

734.358.0354

BARTW@SWISHERCOMMERCIAL.COM

SWISHERCOMMERCIAL.COM