



FOR LEASE

Former Tuesday Morning Space (15,080 SF) Available

1664-1672 NORTON ROAD

Stow, OH 44224

PRESENTED BY:

NICHOLE BOOKER, PHD
Senior Advisor
C: 330.475.5500
nichole.booker@svn.com

OLIVIA REICHENBACH
Associate Advisor
C: 440.781.2811
olivia.reichenbach@svn.com

FORMER TUESDAY MORNING SPACE - NOW AVAILABLE!



LEASING SUMMARY

AVAILABLE:	15,080 SF
BASE RENT:	Negotiable
LEASE TYPE:	NNN
MARKET:	Stow/Hudson
ADDITIONAL CENTER AVAILABILITY:	1,500 - 5,000 SF

STOW-HUDSON TOWNE CENTER

Stow Hudson Towne Centre is strategically located along the busy SR-91 corridor at the Darrow Rd-Norton Rd intersection on the Stow-Hudson border. Over 15,000 SF, formerly occupied by Tuesday Morning is now available and offers an open layout and opportunity to accommodate a variety of uses.

SPACE HIGHLIGHTS

- Grocery anchored (Giant Eagle)
- Ample Parking
- 30,000 VPD (SR-91 - 20,000 VPD; Norton Rd - 10,000 VPD)
- 41,295 rooftops (5 miles) Population 105,668 (5-miles)
- Average HH income \$86,000 (5-miles); Median HH income \$77,700 (10 min radius)
- Over 25,000 employees within a few miles

NICHOLE BOOKER, PHD
Senior Advisor
C: 330.475.5500
nichole.booker@svn.com

OLIVIA REICHENBACH
Associate Advisor
C: 440.781.2811
olivia.reichenbach@svn.com

STOW HUDSON TOWNE CENTRE



NICHOLE BOOKER, PHD

Senior Advisor

C: 330.475.5500

nichole.booker@svn.com

OLIVIA REICHENBACH

Associate Advisor

C: 440.781.2811

olivia.reichenbach@svn.com

DEMOGRAPHICS MAP & REPORT

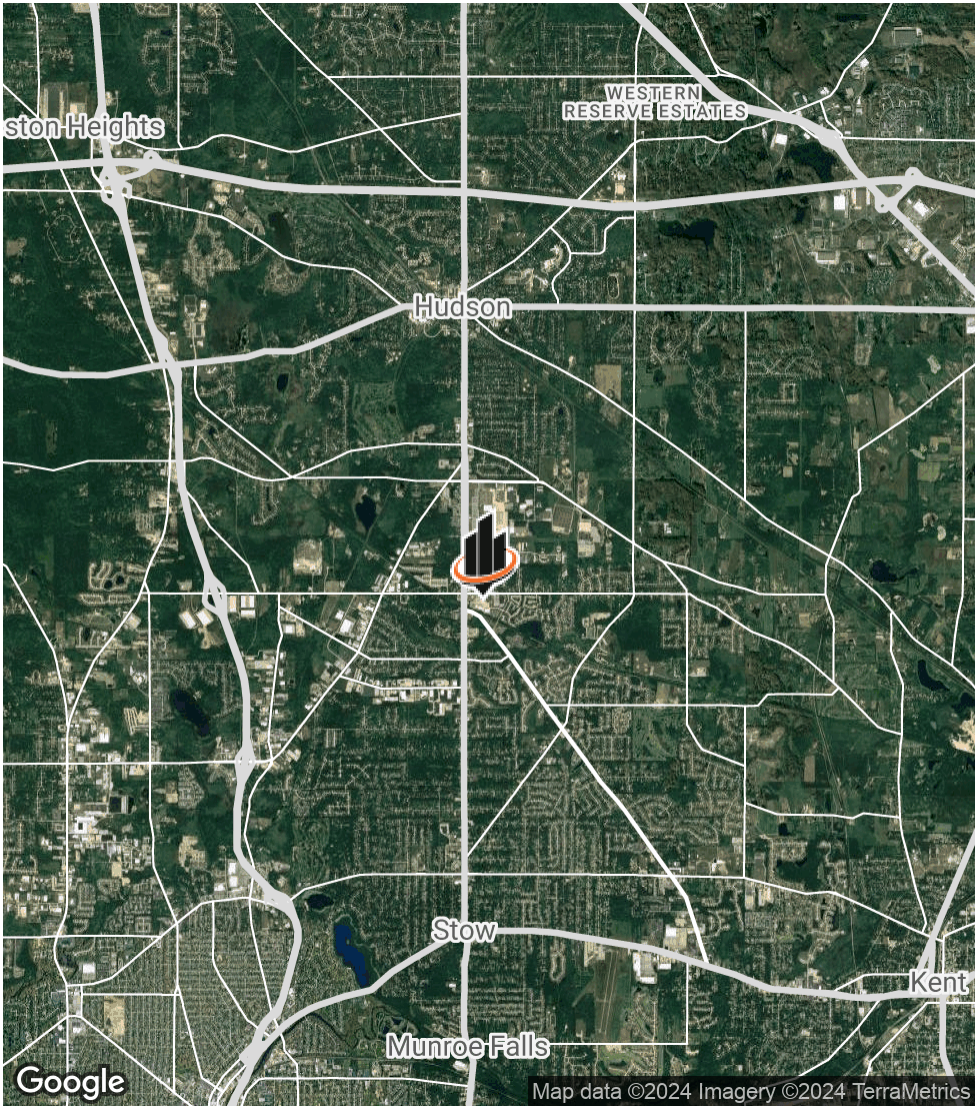
POPULATION 2 MILES 5 MILES 10 MILES

TOTAL POPULATION	18,133	100,355	371,166
AVERAGE AGE	41.6	41.8	40.6
AVERAGE AGE (MALE)	40.6	41.0	39.3
AVERAGE AGE (FEMALE)	42.6	42.9	42.0

HOUSEHOLDS & INCOME 2 MILES 5 MILES 10 MILES

TOTAL HOUSEHOLDS	7,627	42,603	165,427
# OF PERSONS PER HH	2.4	2.4	2.2
AVERAGE HH INCOME	\$105,671	\$97,049	\$77,805
AVERAGE HOUSE VALUE	\$220,044	\$224,343	\$172,985

2020 American Community Survey (ACS)



NICHOLE BOOKER, PHD
Senior Advisor
C: 330.475.5500
nichole.booker@svn.com

OLIVIA REICHENBACH
Associate Advisor
C: 440.781.2811
olivia.reichenbach@svn.com