



WWW.CMEATX.COM

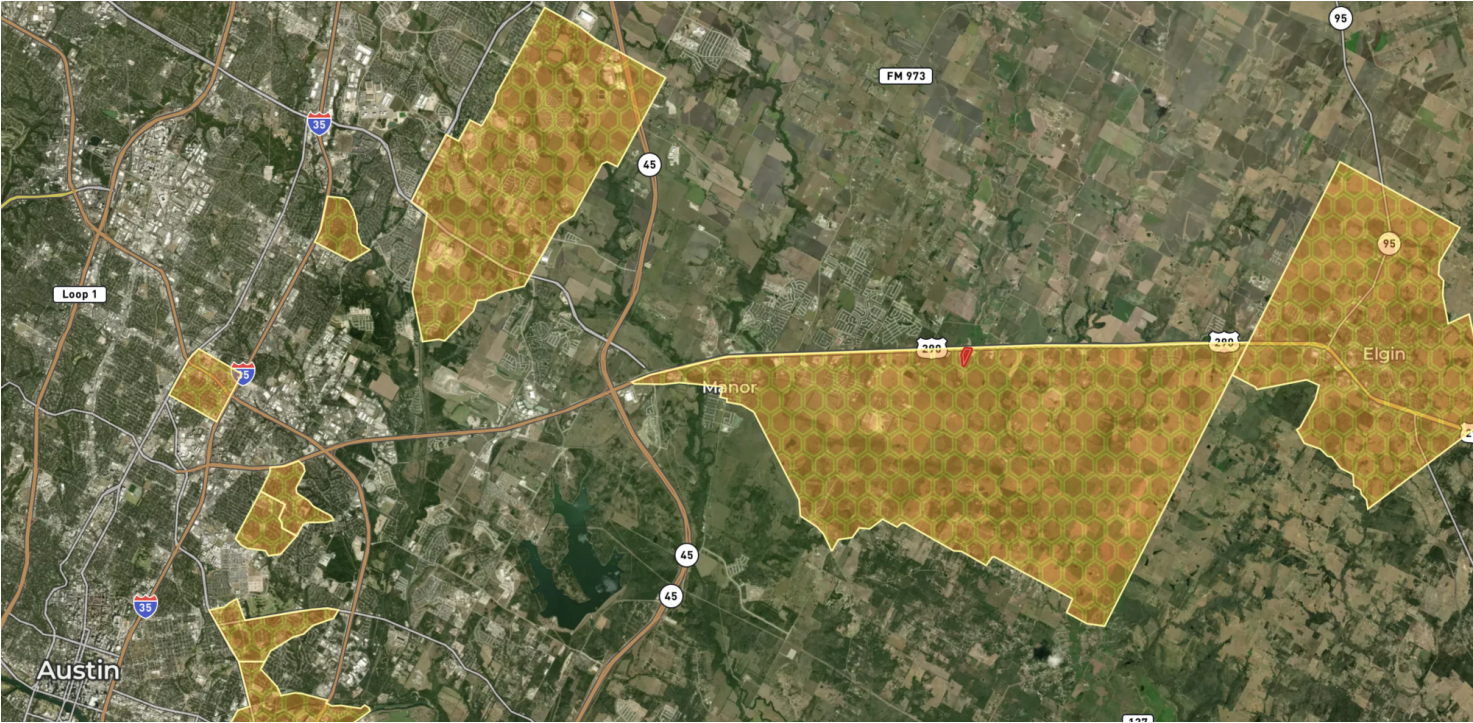
14719 US HIGHWAY 290 E,
MANOR, TX 78653

14719 US HIGHWAY 290 E

14719 US HIGHWAY 290 E

14719 US HIGHWAY 290 E, MANOR, TX 78653

PROPERTY SUMMARY



PROPERTY DESCRIPTION

Promising Opportunities

Manor, Texas could be one of the most overlooked areas within the Austin metro, yet it could offer some of the most profitable long-term opportunities. This indicates a potential for growth and investment returns.

Real Estate Appreciation

Neighborhood Scout reports Manor's real estate has appreciated 140.99% over the last ten years, and it is within the top 10% nationwide for real estate appreciation. The average yearly appreciation rate stands at 9.19%, which would provide a strong return on investment (ROI) for developers.

Fast Growing City

The city has been growing quickly as indicated by approvals for new housing as well as hundreds of apartments in development. This growth can present opportunities for further development and high demand for property.

Expansion of Commercial Facilities

ABJ has published the sentiments of the city also seeking commercial growth with the development of new retail spaces including a potential H-E-B and Home Depot. This would likely increase local property values and attract more people to the area, benefiting investors.

VIDEO

OFFERING SUMMARY

Sale Price:	Subject To Offer
Number of Units:	6
Lot Size:	12.71 Acres

DEMOGRAPHICS	1 MILE	5 MILES	10 MILES
Total Households	314	7,344	42,227
Total Population	1,094	23,830	129,995
Average HH Income	\$87,947	\$83,288	\$90,588

14719 US HIGHWAY 290 E

14719 US HIGHWAY 290 E, MANOR, TX 78653

ADDITIONAL PHOTOS



14719 US HIGHWAY 290 E

14719 US HIGHWAY 290 E, MANOR, TX 78653

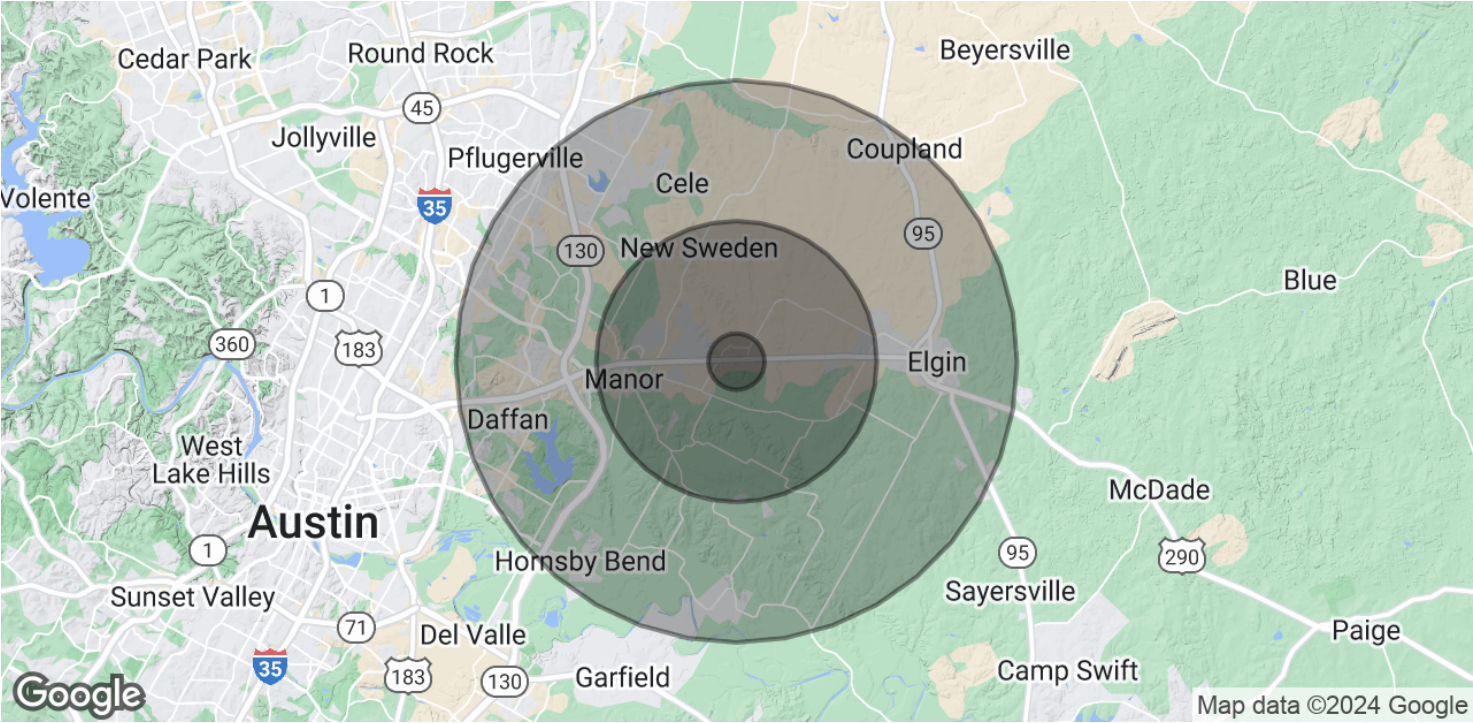
LOCATION MAP



14719 US HIGHWAY 290 E

14719 US HIGHWAY 290 E, MANOR, TX 78653

DEMOGRAPHICS MAP & REPORT



POPULATION	1 MILE	5 MILES	10 MILES
Total Population	1,094	23,830	129,995
Average Age	27.5	29.5	33.4
Average Age (Male)	27.1	29.9	32.5
Average Age (Female)	28.2	29.4	34.0
HOUSEHOLDS & INCOME	1 MILE	5 MILES	10 MILES
Total Households	314	7,344	42,227
# of Persons per HH	3.5	3.2	3.1
Average HH Income	\$87,947	\$83,288	\$90,588
Average House Value	\$228,279	\$213,784	\$223,427

2020 American Community Survey (ACS)

