

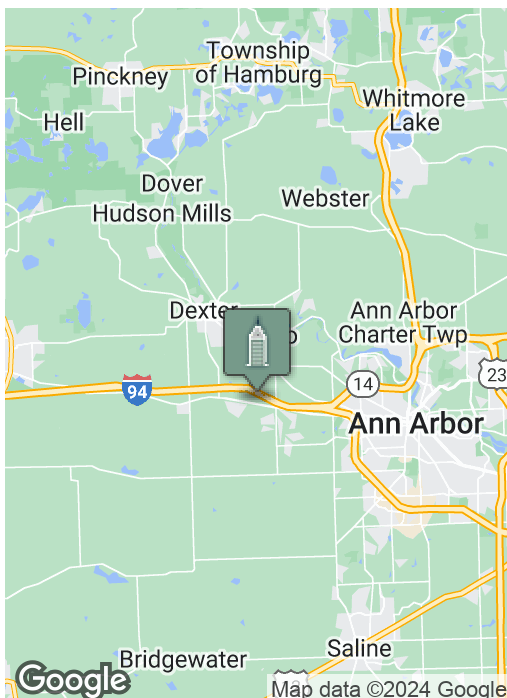
Retail Showroom and Warehouse

6071 JACKSON, ANN ARBOR, MI 48103



Swisher
COMMERCIAL

FOR SALE



SUMMARY

Sale Price:	\$1,600,000
Available SF:	18,246 SF
Lot Size:	1.48 Acres
2023 Taxes:	\$18,473/YR
Zoning:	C2 - General Commercial

PROPERTY OVERVIEW

Large showroom and warehouse located on Jackson Road near Zeeb Road located in close proximity to major retailers, commercial, office, and restaurants. High visibility and signage on Jackson Road.

18,246 SF of space including a retail front. The possibilities are endless. Front showroom area has two (2) offices and retail counter. The building has two (2) loading docks (one is enclosed) and one (1) ground level 12' overhead door. Ceiling height is 14' - 16' with a 12'6" clearance. Geothermal heat & AC in the offices and showroom.

Ample parking in front and rear of building.

***Building
relationships.***

208 East Washington Street Ann Arbor, MI 48104

734.663.0501

Charlie Koenn

734.926.0230

CKOENN@SWISHERCOMMERCIAL.COM

SWISHERCOMMERCIAL.COM

Retail Showroom and Warehouse for Sale

6071 JACKSON, ANN ARBOR, MI 48103



Sale Price **\$1,600,000**

Lease Rate **\$9.25 - 12.50 SF/YR**

LOCATION INFORMATION

Street Address 6071 Jackson
City, State, Zip Ann Arbor, MI 48103
County Washtenaw
Cross-Streets Between Zeeb and Staebler Roads
Township Scio Township
Side of the Street South
Nearest Highway I-94, M-14, US-23
Nearest Airport Ann Arbor, DTW

PROPERTY INFORMATION

Property Type Retail - Warehouse
Property Subtype Free Standing Building
Zoning C2 - General Commercial
Lot Size 1.48 Acres
APN # H-08-21-300-005
Lot Frontage 100 ft
Lot Depth 657 ft
Signage Yes

BUILDING INFORMATION

Building Size 18,246 sq ft
Ceiling Height 14 - 16 ft
Clear Ceiling Height 12.5 ft
Year Built 1965
Loading Dock 2
Overhead Door 1

PARKING & TRANSPORTATION

Parking Type Surface
Number of Parking Spaces 25
Semi Access Yes
Public Transportation Yes

Major Nearby Retailers

Meijer
Lowe's
Menards

TAXES & VALUATION

2023 Taxes \$18,473/YR



***Building
relationships.***

208 East Washington Street Ann Arbor, MI 48104

734.663.0501

Charlie Koenn

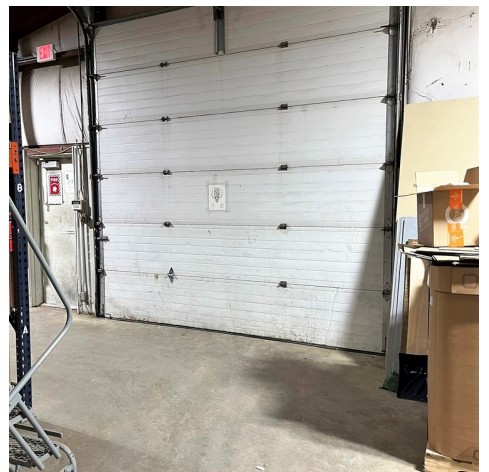
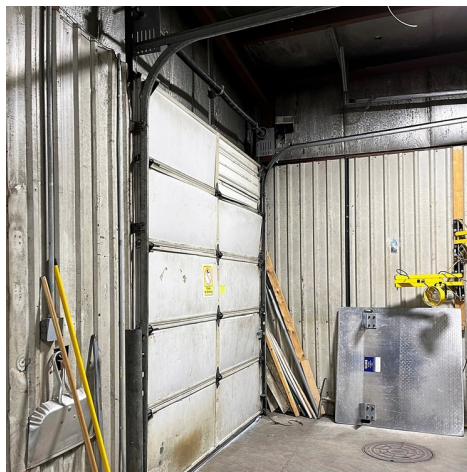
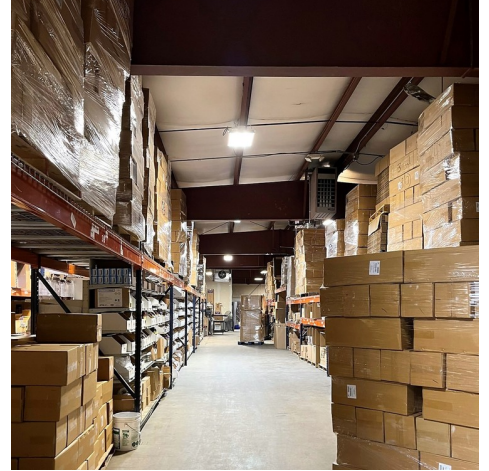
734.926.0230

CKOENN@SWISHERCOMMERCIAL.COM

SWISHERCOMMERCIAL.COM

Retail Showroom and Warehouse for Sale

6071 JACKSON, ANN ARBOR, MI 48103



***Building
relationships.***

208 East Washington Street Ann Arbor, MI 48104

734.663.0501

Charlie Koenn

734.926.0230

CKOENN@SWISHERCOMMERCIAL.COM

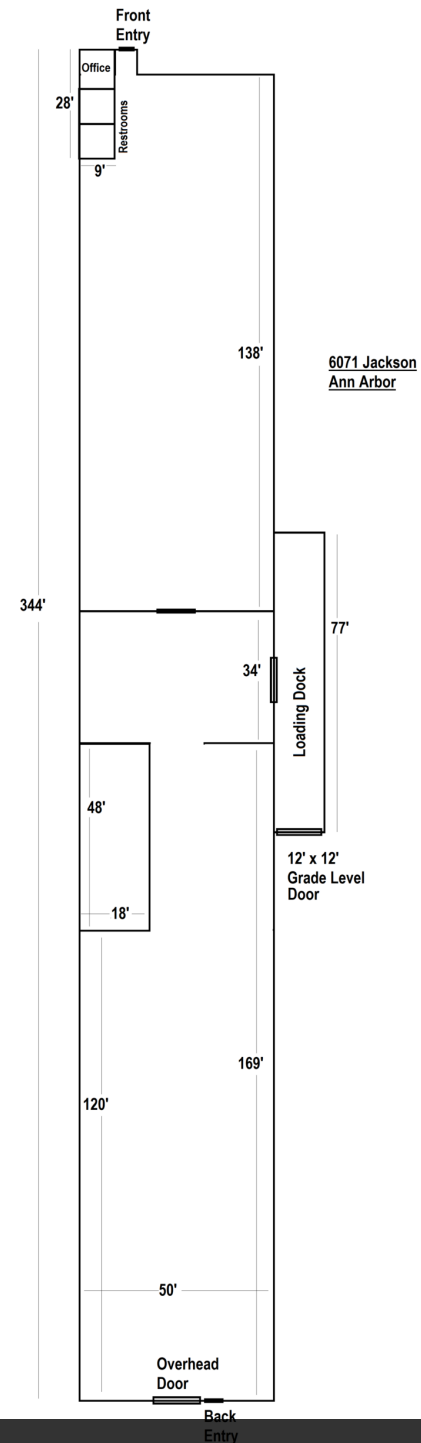
SWISHERCOMMERCIAL.COM

Retail Showroom and Warehouse for Sale

6071 JACKSON, ANN ARBOR, MI 48103



Aerial



Floor Plan

***Building
relationships.***

208 East Washington Street Ann Arbor, MI 48104

734.663.0501

Charlie Koenn

734.926.0230

CKOENN@SWISHERCOMMERCIAL.COM

SWISHERCOMMERCIAL.COM

Retail Showroom and Warehouse for Sale

6071 JACKSON, ANN ARBOR, MI 48103



**Building
relationships.**

208 East Washington Street Ann Arbor, MI 48104

734.663.0501

Charlie Koenn

734.926.0230

CKOENN@SWISHERCOMMERCIAL.COM

SWISHERCOMMERCIAL.COM