

+/- 0.30 ACRES RESIDENTIAL LAND FOR SALE

STATELINE DR

Holiday Island, AR 72631



PROPERTY DESCRIPTION

Looking to build in Holiday Island? Here's your chance! +/- 0.30 acre interior lot that is level and mostly open with a few trees on the property. Enjoy the amenities of Holiday Island, including, Table Rock Lake, 2 golf courses, swimming pools, tennis courts, club houses, and more!

PROPERTY HIGHLIGHTS

- +/- 0.30 Acres
- Interior Lot
- Level and Mostly Open with a few trees

OFFERING SUMMARY

Sale Price:	\$8,900
Lot Size:	0.3 Acres

DEMOGRAPHICS	1 MILE	3 MILES	5 MILES
Total Households	323	1,882	3,707
Total Population	449	2,579	5,385
Average HH Income	\$36,009	\$39,632	\$41,971

We obtained the information above from sources we believe to be reliable. However, we have not verified its accuracy and make no guarantee, warranty or representation about it. It is submitted subject to the possibility of errors, omissions, change of price, rental or other conditions, prior sale, lease or financing, or withdrawal without notice. We include projections, opinions, assumptions or estimates for example only, and they may not represent current or future performance of the property. You and your tax and legal advisors should conduct your own investigation of the property and transaction.

TIMOTHY SALMONSEN
Executive Broker
O: 479.231.1355
C: 479.330.1250
sgrleadmanager@gmail.com
AR #EB00066512

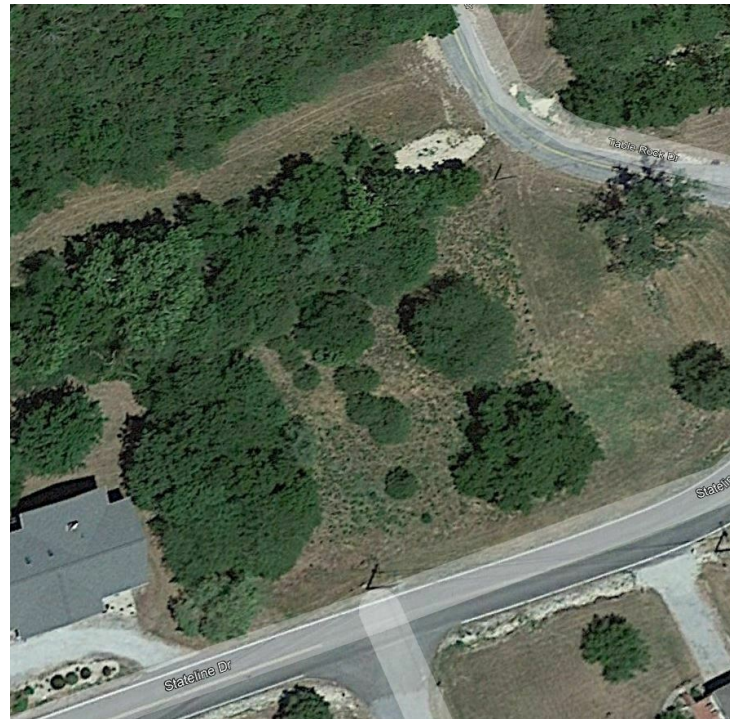
KW COMMERCIAL
201 SW 14th St.
Suite 203
Bentonville, AR 72712

Each Office Independently Owned and Operated salmonsengroup.com

+/- 0.30 ACRES RESIDENTIAL LAND FOR SALE

STATELINE DR

Holiday Island, AR 72631



We obtained the information above from sources we believe to be reliable. However, we have not verified its accuracy and make no guarantee, warranty or representation about it. It is submitted subject to the possibility of errors, omissions, change of price, rental or other conditions, prior sale, lease or financing, or withdrawal without notice. We include projections, opinions, assumptions or estimates for example only, and they may not represent current or future performance of the property. You and your tax and legal advisors should conduct your own investigation of the property and transaction.

TIMOTHY SALMONSEN
Executive Broker
O: 479.231.1355
C: 479.330.1250
sgrleadmanager@gmail.com
AR #EB00066512

KW COMMERCIAL
201 SW 14th St.
Suite 203
Bentonville, AR 72712

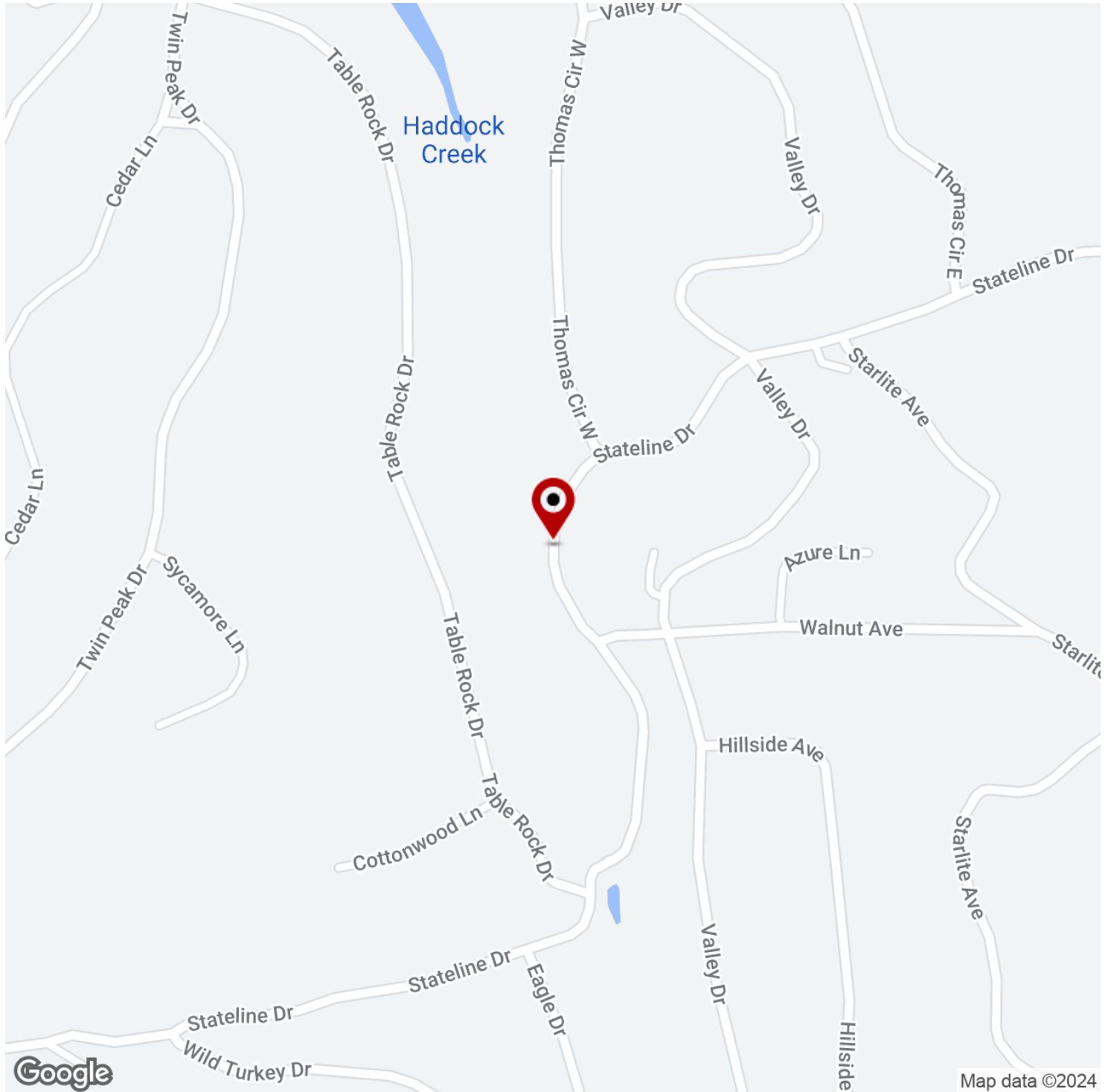
Each Office Independently Owned and Operated salmonsengroup.com

+/- 0.30 ACRES RESIDENTIAL LAND FOR SALE



STATELINE DR

Holiday Island, AR 72631



We obtained the information above from sources we believe to be reliable. However, we have not verified its accuracy and make no guarantee, warranty or representation about it. It is submitted subject to the possibility of errors, omissions, change of price, rental or other conditions, prior sale, lease or financing, or withdrawal without notice. We include projections, opinions, assumptions or estimates for example only, and they may not represent current or future performance of the property. You and your tax and legal advisors should conduct your own investigation of the property and transaction.

TIMOTHY SALMONSEN

Executive Broker
O: 479.231.1355
C: 479.330.1250
sgrleadmanager@gmail.com
AR #EB00066512

KW COMMERCIAL

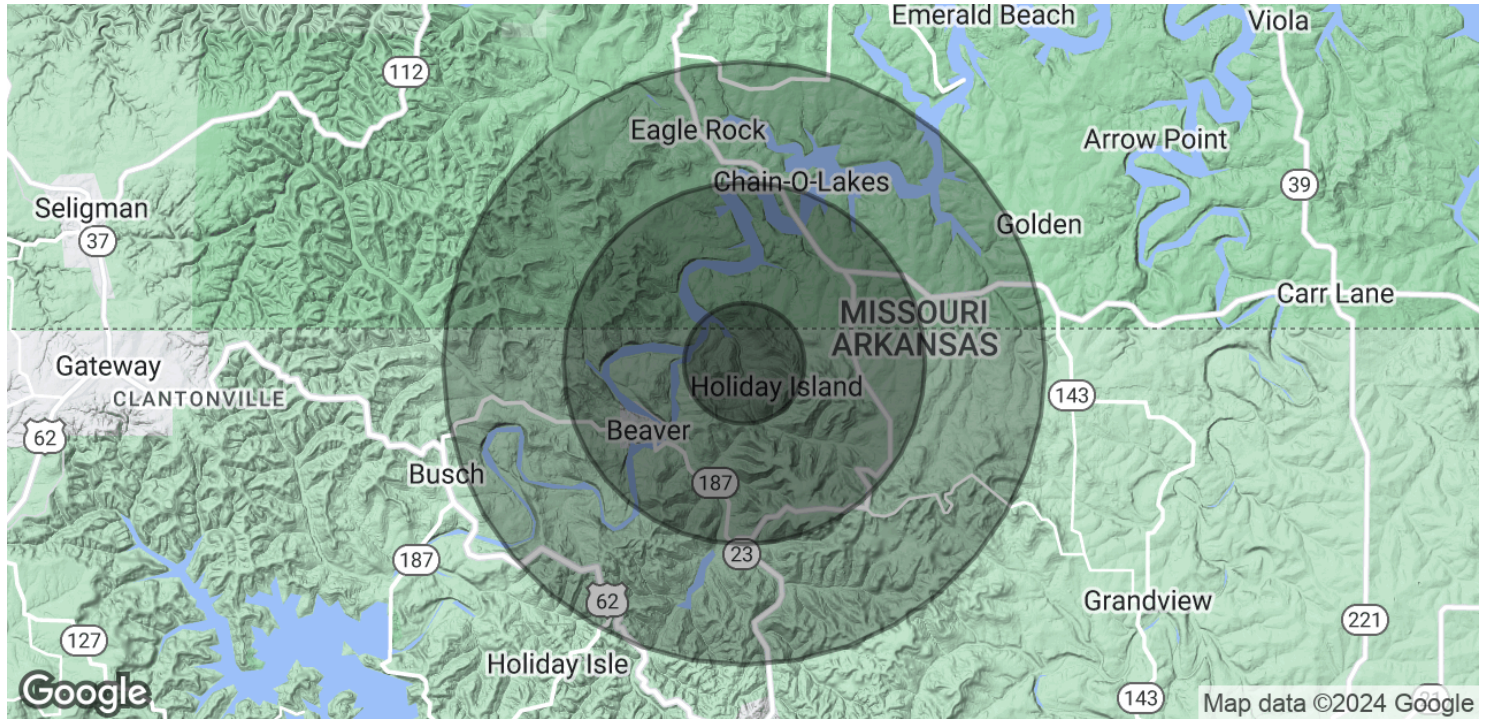
201 SW 14th St.
Suite 203
Bentonville, AR 72712

Each Office Independently Owned and Operated salmonsengroup.com

+/- 0.30 ACRES RESIDENTIAL LAND FOR SALE

STATELINE DR

Holiday Island, AR 72631



POPULATION	1 MILE	3 MILES	5 MILES
Total Population	449	2,579	5,385
Average Age	62.5	61.4	58.1
Average Age (Male)	62.4	60.8	57.1
Average Age (Female)	63.4	62.1	58.7

HOUSEHOLDS & INCOME	1 MILE	3 MILES	5 MILES
Total Households	323	1,882	3,707
# of Persons per HH	1.4	1.4	1.5
Average HH Income	\$36,009	\$39,632	\$41,971
Average House Value	\$152,888	\$177,355	\$184,040

2020 American Community Survey (ACS)

We obtained the information above from sources we believe to be reliable. However, we have not verified its accuracy and make no guarantee, warranty or representation about it. It is submitted subject to the possibility of errors, omissions, change of price, rental or other conditions, prior sale, lease or financing, or withdrawal without notice. We include projections, opinions, assumptions or estimates for example only, and they may not represent current or future performance of the property. You and your tax and legal advisors should conduct your own investigation of the property and transaction.

TIMOTHY SALMONSEN
Executive Broker
O: 479.231.1355
C: 479.330.1250
sgrleadmanager@gmail.com
AR #EB00066512

KW COMMERCIAL
201 SW 14th St.
Suite 203
Bentonville, AR 72712

Each Office Independently Owned and Operated salmonsengroup.com