



OFFICE BUILDING FOR LEASE
15260 ANACAPA RD.
VICTORVILLE, CA 92392

9327 Fairway View Pl., #300 // Rancho Cucamonga, CA 91730 // 909.786.4300 // alliedcommercialrealestate.com

Presented By:

TONY M. GUGLIELMO, CCIM

909.786.4302
tony@alliedcre.com
CalDRE #01301532

BILL FAULKNER

909.578.8233
bill@alliedcre.com
CalDRE #02068702

ALLIED 
COMMERCIAL REAL ESTATE

EXECUTIVE SUMMARY



OFFERING SUMMARY	
Lease Rate:	\$1.00 SF/month (MG)
Building Size:	16,768 SF
Available SF:	4,000 SF
Year Built:	1986
Zoning:	Industrial

TONY M. GUGLIELMO, CCIM
909.786.4302
tony@alliedcre.com
CalDRE #01301532

BILL FAULKNER
909.578.8233
bill@alliedcre.com
CalDRE #02068702

PROPERTY OVERVIEW

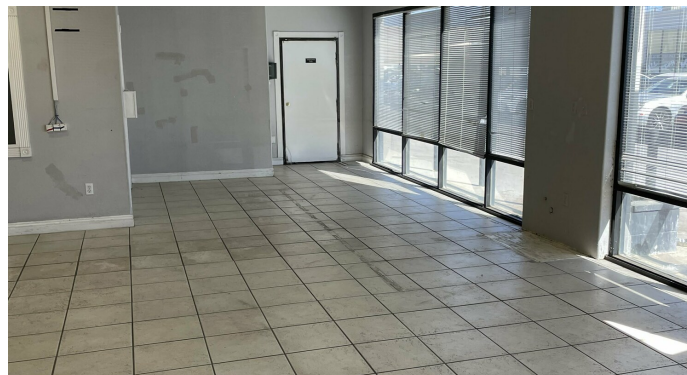
Beautiful upstairs office with 4,000 square feet of privacy, a full kitchen and two restrooms. Available suites are labeled Ste A8, A9, A10, A11, A12. Ample private and gated parking designated for the unit. It has three private offices along with open flex bullpen areas. This unit has nice tile flooring along with commercial grade carpet. The office is outfitted with plenty of large windows to allow for natural lighting. This space would be perfect for any professional office uses. The landlord is open to many uses and negotiable on pricing.

PROPERTY HIGHLIGHTS

- 4 private offices
- Full kitchen
- Plenty of secured parking
- Retail and Industrial uses
- No HOA's
- Centrally located near the 15 freeway

15260 ANACAPA RD. // Victorville, CA 92392

ADDITIONAL PHOTOS



TONY M. GUGLIELMO, CCIM
909.786.4302
tony@alliedcre.com
CalDRE #01301532

BILL FAULKNER
909.578.8233
bill@alliedcre.com
CalDRE #02068702

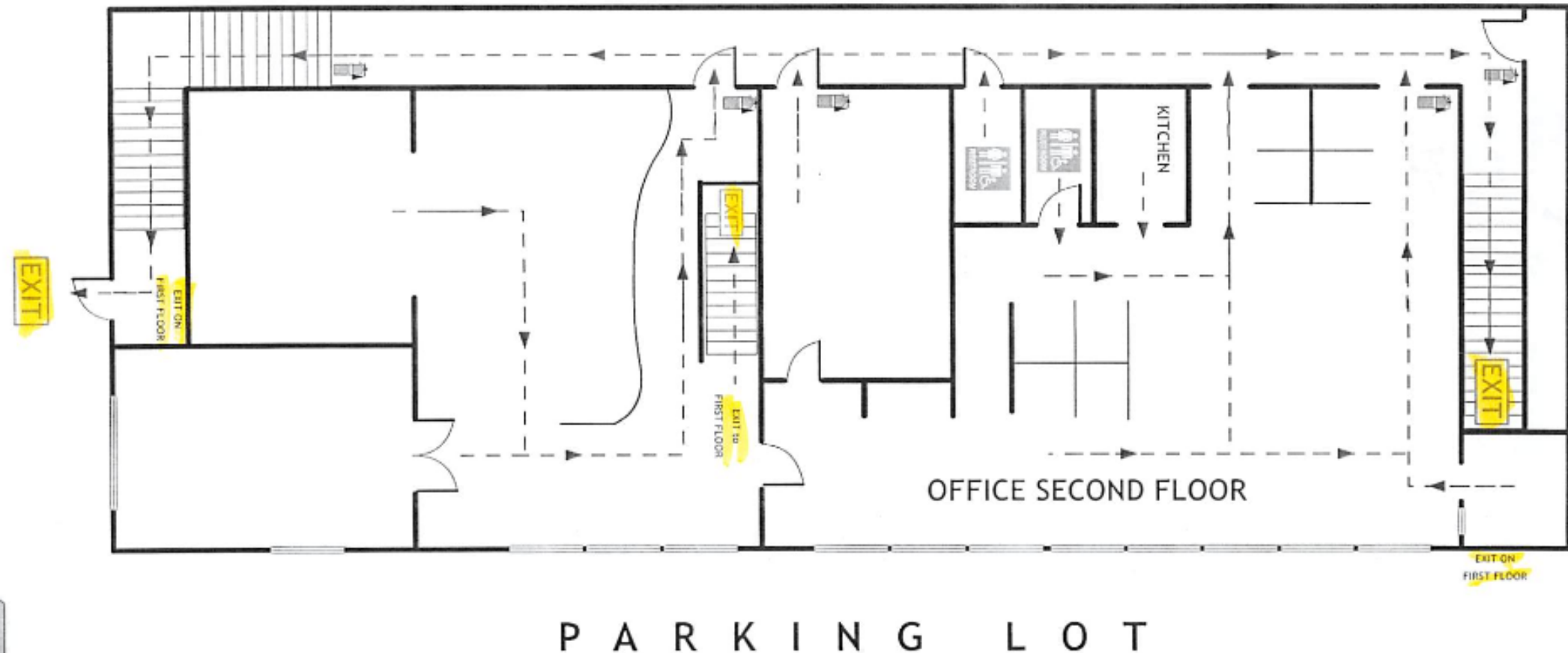
9327 Fairway View Pl., #300 // Rancho Cucamonga, CA 91730 // 909.786.4300 // alliedcommercialrealestate.com



COMMERCIAL REAL ESTATE

The information above has been obtained from sources believed reliable. While we do not doubt its accuracy we have not verified it and make no guarantee, warranty or representation about it. It is your responsibility to independently confirm its accuracy and completeness. Any projections, opinions, assumptions, or estimates used are for example only and do not represent the current or future performance of the property. The value of this transaction to you depends on tax and other factors which should be evaluated by your tax, financial, and legal advisors. You and your advisors should conduct a careful, independent investigation of the property to determine to your satisfaction the suitability of the property for your needs.

2ND FLOOR PLAN



TONY M. GUGLIELMO, CCIM
909.786.4302
tony@alliedcre.com
CalDRE #01301532

BILL FAULKNER
909.578.8233
bill@alliedcre.com
CalDRE #02068702

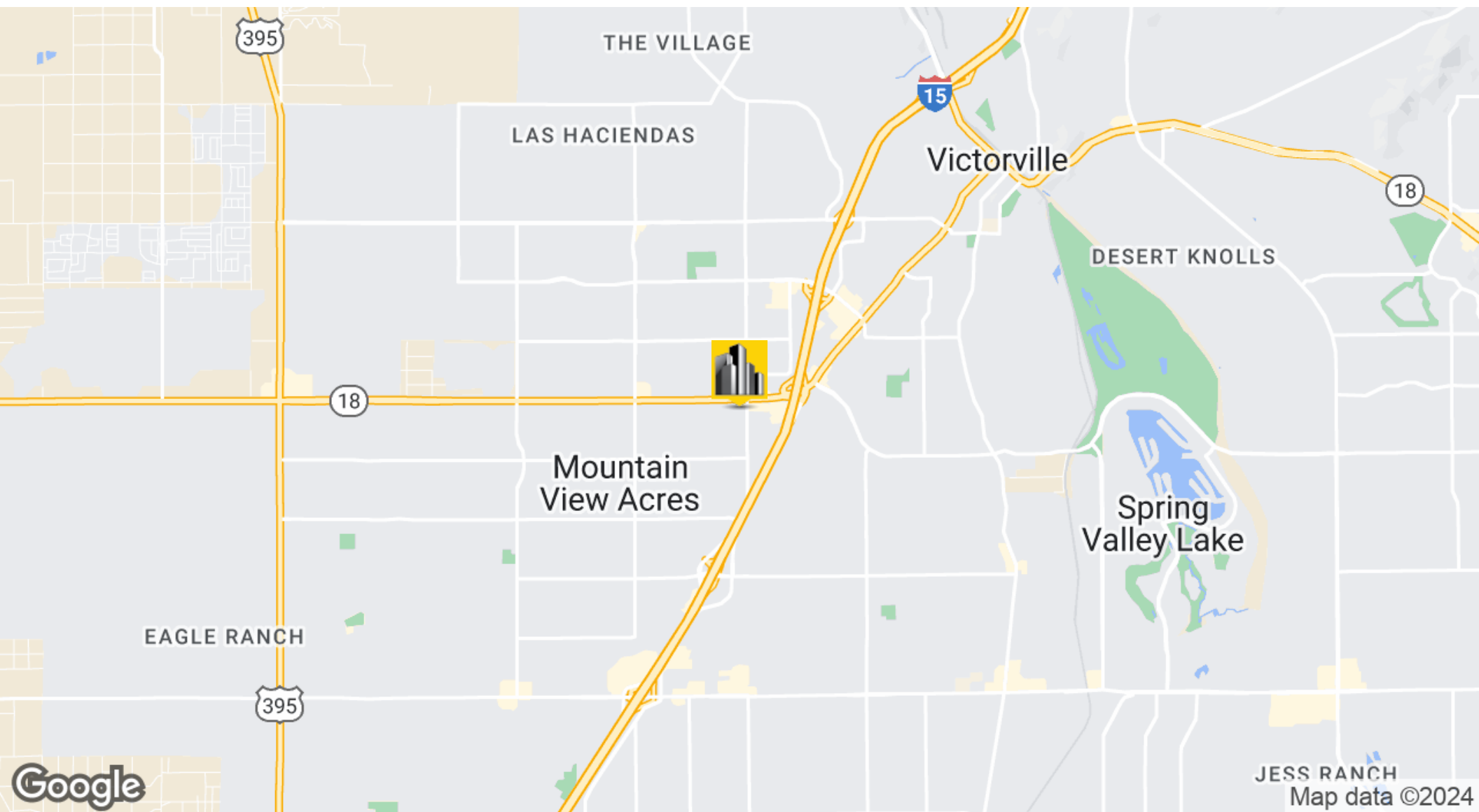
9327 Fairway View Pl., #300 // Rancho Cucamonga, CA 91730 // 909.786.4300 // alliedcommercialrealestate.com



COMMERCIAL REAL ESTATE

15260 ANACAPA RD. // Victorville, CA 92392

LOCATION MAP



TONY M. GUGLIELMO, CCIM
909.786.4302
tony@alliedcre.com
CalDRE #01301532

BILL FAULKNER
909.578.8233
bill@alliedcre.com
CalDRE #02068702

9327 Fairway View Pl., #300 // Rancho Cucamonga, CA 91730 // 909.786.4300 // alliedcommercialrealestate.com



COMMERCIAL REAL ESTATE

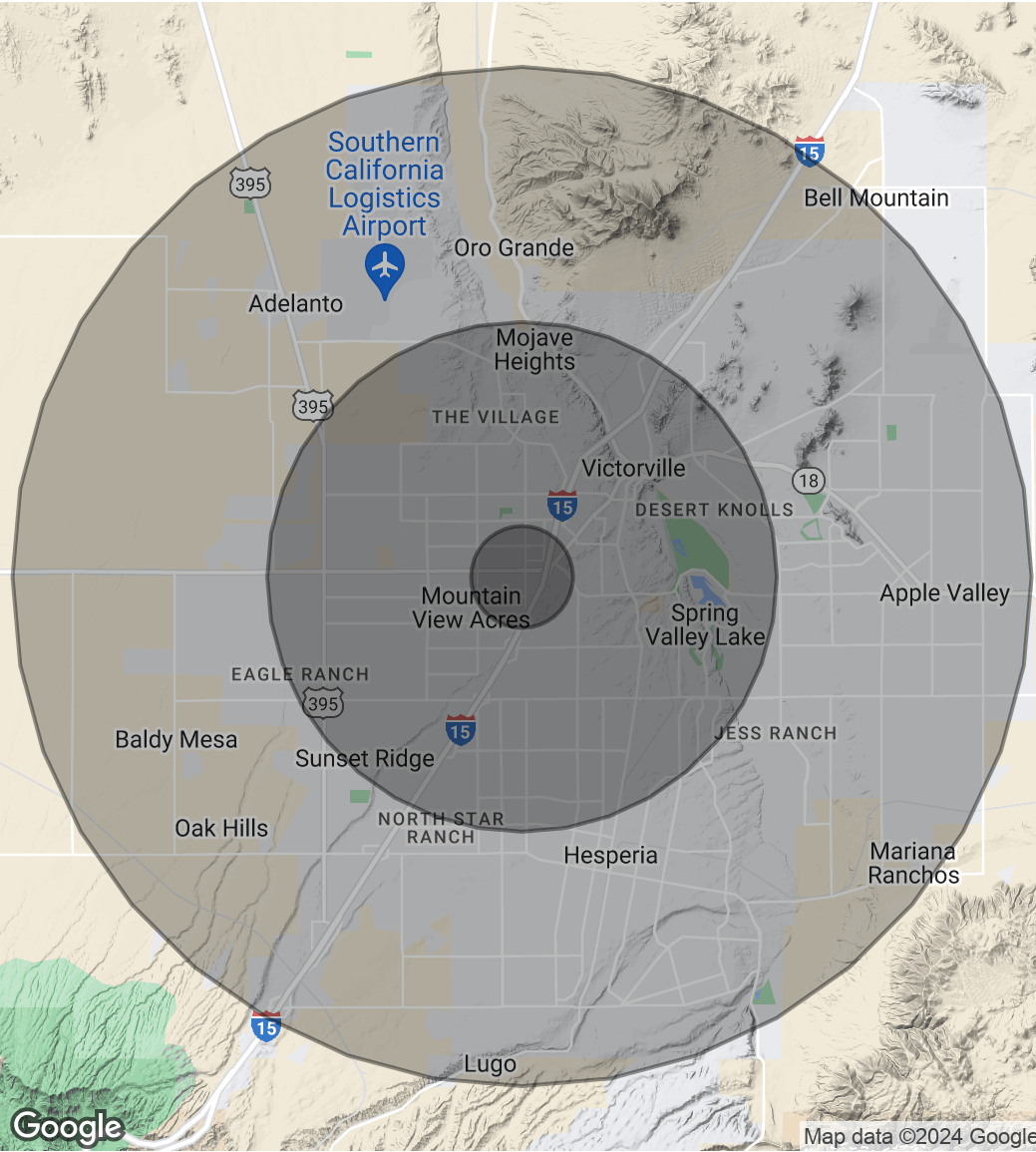
The information above has been obtained from sources believed reliable. While we do not doubt its accuracy we have not verified it and make no guarantee, warranty or representation about it. It is your responsibility to independently confirm its accuracy and completeness. Any projections, opinions, assumptions, or estimates used are for example only and do not represent the current or future performance of the property. The value of this transaction to you depends on tax and other factors which should be evaluated by your tax, financial, and legal advisors. You and your advisors should conduct a careful, independent investigation of the property to determine to your satisfaction the suitability of the property for your needs.

DEMOGRAPHICS MAP & REPORT

POPULATION	1 MILE	5 MILES	10 MILES
Total Population	9,347	167,172	342,991
Average Age	29.6	31.7	32.9
Average Age (Male)	29.0	29.8	31.7
Average Age (Female)	28.6	33.2	34.3

HOUSEHOLDS & INCOME	1 MILE	5 MILES	10 MILES
Total Households	3,418	50,718	104,742
# of Persons per HH	2.7	3.3	3.3
Average HH Income	\$51,679	\$69,421	\$68,554
Average House Value	\$105,669	\$229,072	\$240,581

RACE	1 MILE	5 MILES	10 MILES
Total Population - White	5,560	102,493	227,814
Total Population - Black	1,502	23,164	37,863
Total Population - Asian	623	6,402	10,850
Total Population - Hawaiian	21	235	564
Total Population - American Indian	11	1,685	3,000
Total Population - Other	636	17,166	31,225
2020 American Community Survey (ACS)			



TONY M. GUGLIELMO, CCIM
909.786.4302
tony@alliedcre.com
CalDRE #01301532

BILL FAULKNER
909.578.8233
bill@alliedcre.com
CalDRE #02068702