

28,000 SF
INDUSTRIAL



FOR LEASE

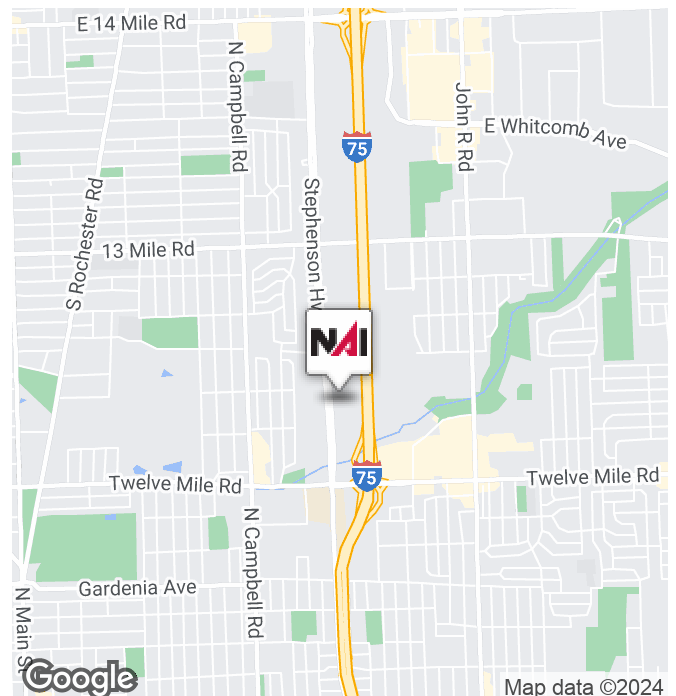


29350 Stephenson Hwy

Madison Heights, Michigan 48071

Property Highlights

- 28,000 SF Available
- 3,500 SF of Office Space
- 16' Clear Height
- 1- 12' x 12' Grade Level Door/ 1 Truckwell
- Cranes
- M-2 Zoning
- Great Main Road Exposure



Commercial Real Estate Services, Worldwide.

www.naifarbman.com

Ron Goldstone

Executive Vice President | 248.351.4371
goldstone@farbman.com

Brandon Ben-Ezra

Leasing and Sales Associate | 947.517.6226
ben-ezra@farbman.com

NO WARRANTY, EXPRESS OR IMPLIED, IS MADE AS TO THE ACCURACY OF THE INFORMATION CONTAINED HEREIN. THIS INFORMATION IS SUBMITTED SUBJECT TO ERRORS, OMISSIONS, CHANGE OF PRICE, RENTAL OR OTHER CONDITIONS, WITHDRAWAL WITHOUT NOTICE, AND IS SUBJECT TO ANY SPECIAL LISTING CONDITIONS IMPOSED BY OUR PRINCIPALS. COOPERATING BROKERS, BUYERS, TENANTS AND OTHER PARTIES WHO RECEIVE THIS DOCUMENT SHOULD NOT RELY ON IT, BUT SHOULD USE IT AS A STARTING POINT OF ANALYSIS, AND SHOULD INDEPENDENTLY CONFIRM THE ACCURACY OF THE INFORMATION CONTAINED HEREIN THROUGH A DUE DILIGENCE REVIEW OF THE BOOKS, RECORDS, FILES AND DOCUMENTS THAT CONSTITUTE RELIABLE SOURCES OF THE INFORMATION DESCRIBED HEREIN. LOGOS ARE FOR IDENTIFICATION PURPOSES ONLY AND MAY BE TRADEMARKS OF THEIR RESPECTIVE COMPANIES. NAI Farbman, INC. CA BRE LIC. #01990696.

28,000 SF INDUSTRIAL



FOR LEASE

Lease Rate

\$8.00 SF/YR

LOCATION INFORMATION

Street Address	29350 Stephenson Hwy
City, State, Zip	Madison Heights, MI 48071
County	Oakland
Cross-Streets	Stephenson Highway / 12 Mile Road

PROPERTY INFORMATION

Property Type	Industrial
Property Subtype	Manufacturing
Zoning	M-2
Security	Yes
Parking	Large Excess Parking in Rear

BUILDING INFORMATION

Building Size	Steel/Block
SF Available	28,000 SF
Year Built	1963
Exterior Construction	Block/Brick
Structural System	Steel/Block
Floors	6"
Floor Drains	Yes
Ceiling Height	16' Clear
Grade Level Doors	(1) 12'x12'
Truck Wells	1 Interior
Cranes	Yes, Varies
Power	2,000 A/480V Panel
Heating	Gas Forced Air
Air Conditioning	Office



Commercial Real Estate Services, Worldwide.
www.naifarbman.com

Ron Goldstone
Executive Vice President | 248.351.4371
goldstone@farbman.com

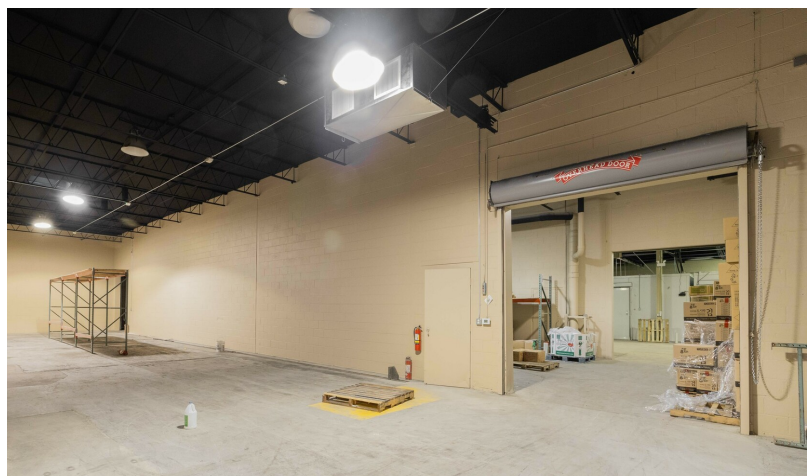
Brandon Ben-Ezra
Leasing and Sales Associate | 947.517.6226
ben-ezra@farbman.com

NO WARRANTY, EXPRESS OR IMPLIED, IS MADE AS TO THE ACCURACY OF THE INFORMATION CONTAINED HEREIN. THIS INFORMATION IS SUBMITTED SUBJECT TO ERRORS, OMISSIONS, CHANGE OF PRICE, RENTAL OR OTHER CONDITIONS, WITHDRAWAL WITHOUT NOTICE, AND IS SUBJECT TO ANY SPECIAL LISTING CONDITIONS IMPOSED BY OUR PRINCIPALS. COOPERATING BROKERS, BUYERS, TENANTS AND OTHER PARTIES WHO RECEIVE THIS DOCUMENT SHOULD NOT RELY ON IT, BUT SHOULD USE IT AS A STARTING POINT OF ANALYSIS, AND SHOULD INDEPENDENTLY CONFIRM THE ACCURACY OF THE INFORMATION CONTAINED HEREIN THROUGH A DUE DILIGENCE REVIEW OF THE BOOKS, RECORDS, FILES AND DOCUMENTS THAT CONSTITUTE RELIABLE SOURCES OF THE INFORMATION DESCRIBED HEREIN. LOGOS ARE FOR IDENTIFICATION PURPOSES ONLY AND MAY BE TRADEMARKS OF THEIR RESPECTIVE COMPANIES. NAI Farbman, INC. CA BRE LIC. #01990696.

28,000 SF
INDUSTRIAL



FOR LEASE



NAI Farbman
Commercial Real Estate Services, Worldwide.
www.naifarbman.com

Ron Goldstone
Executive Vice President | 248.351.4371
goldstone@farbman.com

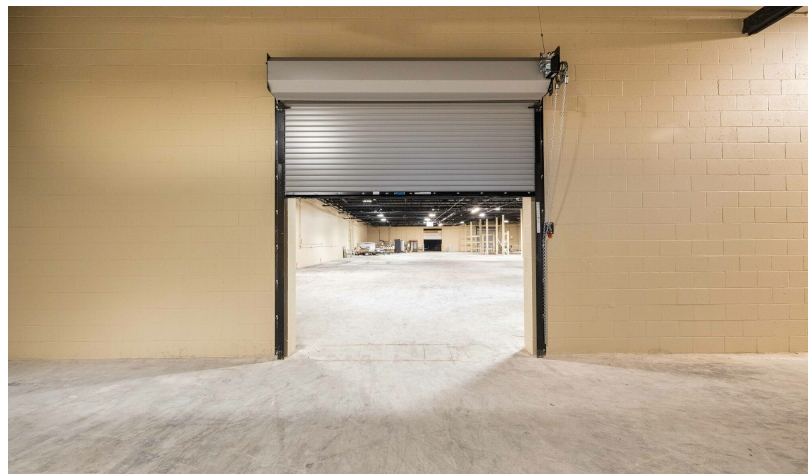
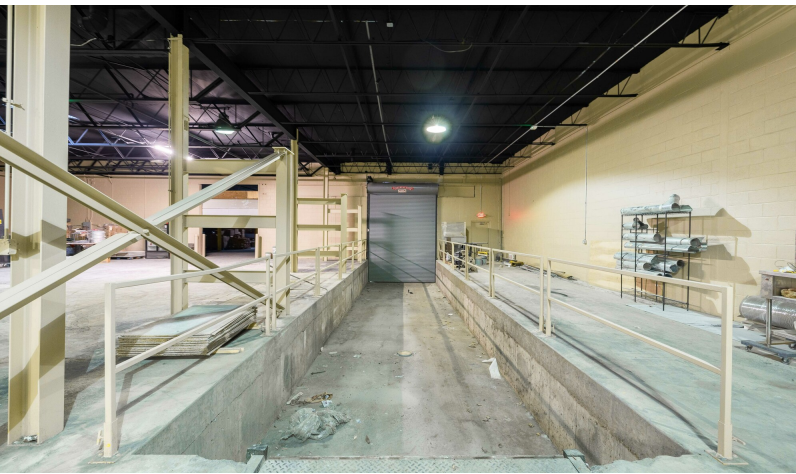
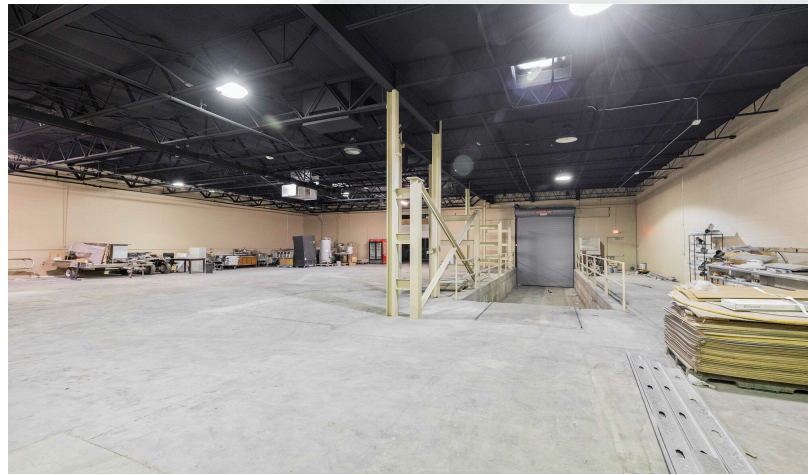
Brandon Ben-Ezra
Leasing and Sales Associate | 947.517.6226
ben-ezra@farbman.com

NO WARRANTY, EXPRESS OR IMPLIED, IS MADE AS TO THE ACCURACY OF THE INFORMATION CONTAINED HEREIN. THIS INFORMATION IS SUBMITTED SUBJECT TO ERRORS, OMISSIONS, CHANGE OF PRICE, RENTAL OR OTHER CONDITIONS, WITHDRAWAL WITHOUT NOTICE, AND IS SUBJECT TO ANY SPECIAL LISTING CONDITIONS IMPOSED BY OUR PRINCIPALS. COOPERATING BROKERS, BUYERS, TENANTS AND OTHER PARTIES WHO RECEIVE THIS DOCUMENT SHOULD NOT RELY ON IT, BUT SHOULD USE IT AS A STARTING POINT OF ANALYSIS, AND SHOULD INDEPENDENTLY CONFIRM THE ACCURACY OF THE INFORMATION CONTAINED HEREIN THROUGH A DUE DILIGENCE REVIEW OF THE BOOKS, RECORDS, FILES AND DOCUMENTS THAT CONSTITUTE RELIABLE SOURCES OF THE INFORMATION DESCRIBED HEREIN. LOGOS ARE FOR IDENTIFICATION PURPOSES ONLY AND MAY BE TRADEMARKS OF THEIR RESPECTIVE COMPANIES. NAI Farbman, INC. CA BRE LIC. #01990696.

28,000 SF
INDUSTRIAL



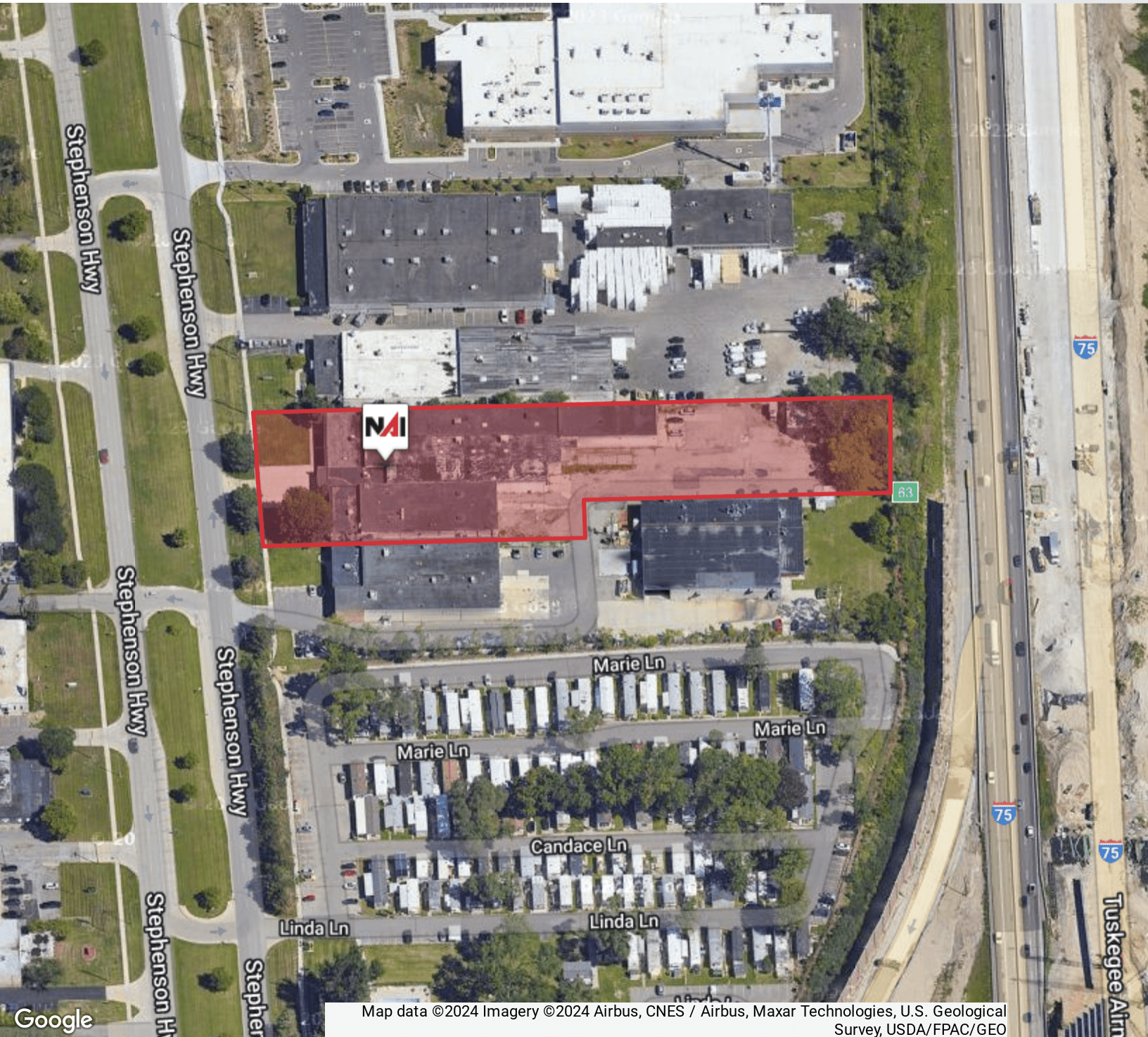
FOR LEASE



28,000 SF
INDUSTRIAL



FOR LEASE



Map data ©2024 Imagery ©2024 Airbus, CNES / Airbus, Maxar Technologies, U.S. Geological Survey, USDA/FPAC/GEO



Commercial Real Estate Services, Worldwide.
www.naifarbman.com

Ron Goldstone
Executive Vice President | 248.351.4371
goldstone@farbman.com

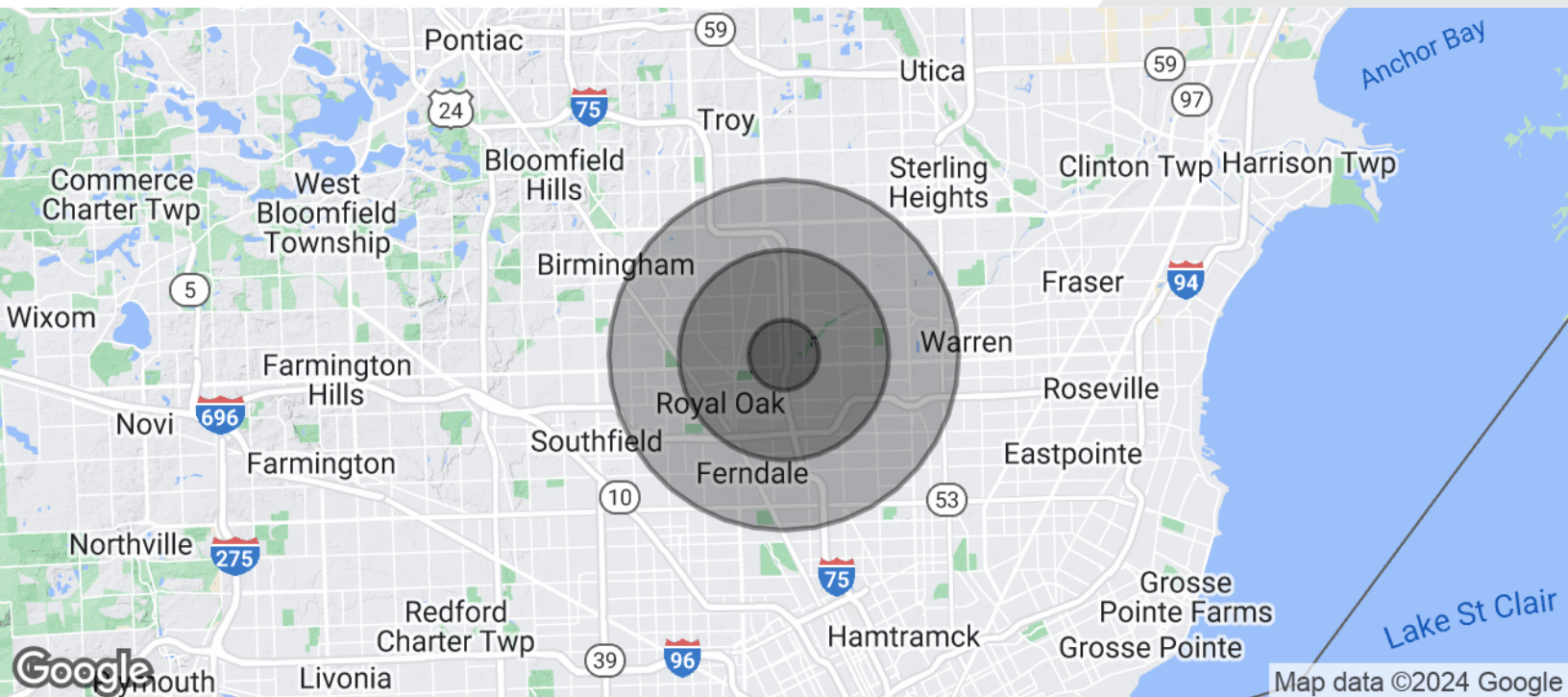
Brandon Ben-Ezra
Leasing and Sales Associate | 947.517.6226
ben-ezra@farbman.com

NO WARRANTY, EXPRESS OR IMPLIED, IS MADE AS TO THE ACCURACY OF THE INFORMATION CONTAINED HEREIN. THIS INFORMATION IS SUBMITTED SUBJECT TO ERRORS, OMISSIONS, CHANGE OF PRICE, RENTAL OR OTHER CONDITIONS, WITHDRAWAL WITHOUT NOTICE, AND IS SUBJECT TO ANY SPECIAL LISTING CONDITIONS IMPOSED BY OUR PRINCIPALS. COOPERATING BROKERS, BUYERS, TENANTS AND OTHER PARTIES WHO RECEIVE THIS DOCUMENT SHOULD NOT RELY ON IT, BUT SHOULD USE IT AS A STARTING POINT OF ANALYSIS, AND SHOULD INDEPENDENTLY CONFIRM THE ACCURACY OF THE INFORMATION CONTAINED HEREIN THROUGH A DUE DILIGENCE REVIEW OF THE BOOKS, RECORDS, FILES AND DOCUMENTS THAT CONSTITUTE RELIABLE SOURCES OF THE INFORMATION DESCRIBED HEREIN. LOGOS ARE FOR IDENTIFICATION PURPOSES ONLY AND MAY BE TRADEMARKS OF THEIR RESPECTIVE COMPANIES. NAI Farbman, INC. CA BRE LIC. #01990696.

28,000 SF INDUSTRIAL



FOR LEASE



POPULATION	1 MILE	3 MILES	5 MILES
Total Population	13,185	120,336	336,305
Average Age	39.7	39.3	38.9
Average Age (Male)	37.5	37.9	37.5
Average Age (Female)	42.2	41.3	40.5
HOUSEHOLDS & INCOME	1 MILE	3 MILES	5 MILES
Total Households	5,764	55,232	145,448
# of Persons per HH	2.3	2.2	2.3
Average HH Income	\$64,264	\$64,029	\$65,823
Average House Value	\$159,690	\$173,414	\$185,344

* Demographic data derived from 2020 ACS - US Census



Commercial Real Estate Services, Worldwide.

www.naifarbman.com

Ron Goldstone
Executive Vice President | 248.351.4371
goldstone@farbman.com

Brandon Ben-Ezra
Leasing and Sales Associate | 947.517.6226
ben-ezra@farbman.com

NO WARRANTY, EXPRESS OR IMPLIED, IS MADE AS TO THE ACCURACY OF THE INFORMATION CONTAINED HEREIN. THIS INFORMATION IS SUBMITTED SUBJECT TO ERRORS, OMISSIONS, CHANGE OF PRICE, RENTAL OR OTHER CONDITIONS, WITHDRAWAL WITHOUT NOTICE, AND IS SUBJECT TO ANY SPECIAL LISTING CONDITIONS IMPOSED BY OUR PRINCIPALS. COOPERATING BROKERS, BUYERS, TENANTS AND OTHER PARTIES WHO RECEIVE THIS DOCUMENT SHOULD NOT RELY ON IT, BUT SHOULD USE IT AS A STARTING POINT OF ANALYSIS, AND SHOULD INDEPENDENTLY CONFIRM THE ACCURACY OF THE INFORMATION CONTAINED HEREIN THROUGH A DUE DILIGENCE REVIEW OF THE BOOKS, RECORDS, FILES AND DOCUMENTS THAT CONSTITUTE RELIABLE SOURCES OF THE INFORMATION DESCRIBED HEREIN. LOGOS ARE FOR IDENTIFICATION PURPOSES ONLY AND MAY BE TRADEMARKS OF THEIR RESPECTIVE COMPANIES. NAI Farbman, INC. CA BRE LIC. #01990696.