



PROPERTY HIGHLIGHTS

- +/-1.64 AC development lot for sale
- Great access and visibility from Highway 245/John Rowan Boulevard recently improved with Highway 245 expansion
- Adjacent to the Kentucky Owl Park Distillery, a \$150 million lakeside complex to include a distillery, visitors center, cooperage, rickhouses, bottling center, restaurant and convention center
- Adjacent Newtown Plaza, Peddlers Mall, Buffalo Rings & Wings and Colton's Steakhouse (all separately owned)
- Close proximity to downtown Bardstown and Blue Grass Parkway
- +/-15,262 ADT on Hwy 245/John Rowan Boulevard
- Zoned LID, Light Industrial/Commercial Park
- Contact Broker for details



NO WARRANTY OR REPRESENTATION, EXPRESS OR IMPLIED, IS MADE AS TO THE ACCURACY OF THE INFORMATION CONTAINED HEREIN, AND THE SAME IS SUBMITTED SUBJECT TO ERRORS, OMISSIONS, CHANGE OF PRICE, RENTAL OR OTHER CONDITIONS, PRIOR SALE, LEASE OR FINANCING, OR WITHDRAWAL WITHOUT NOTICE, AND OF ANY SPECIAL LISTING CONDITIONS IMPOSED BY OUR PRINCIPALS NO WARRANTIES OR REPRESENTATIONS ARE MADE AS TO THE CONDITION OF THE PROPERTY OR ANY HAZARDS CONTAINED THEREIN ARE ANY TO BE IMPLIED.

Land For Sale

Newtown Plaza 1.64 AC Development Lot

Granite Drive & Hwy 245

Bardstown, Nelson County, Kentucky 40004



For More Information:

Jamie Adams, CCIM, Vice President

+1 859.422.4413 • jadams@naiisaac.com

J.L. Cannady, CCIM, Vice President

+1 859.422.4410 • jlcannady@naiisaac.com

771 Corporate Drive, Suite 500

Lexington, KY 40503

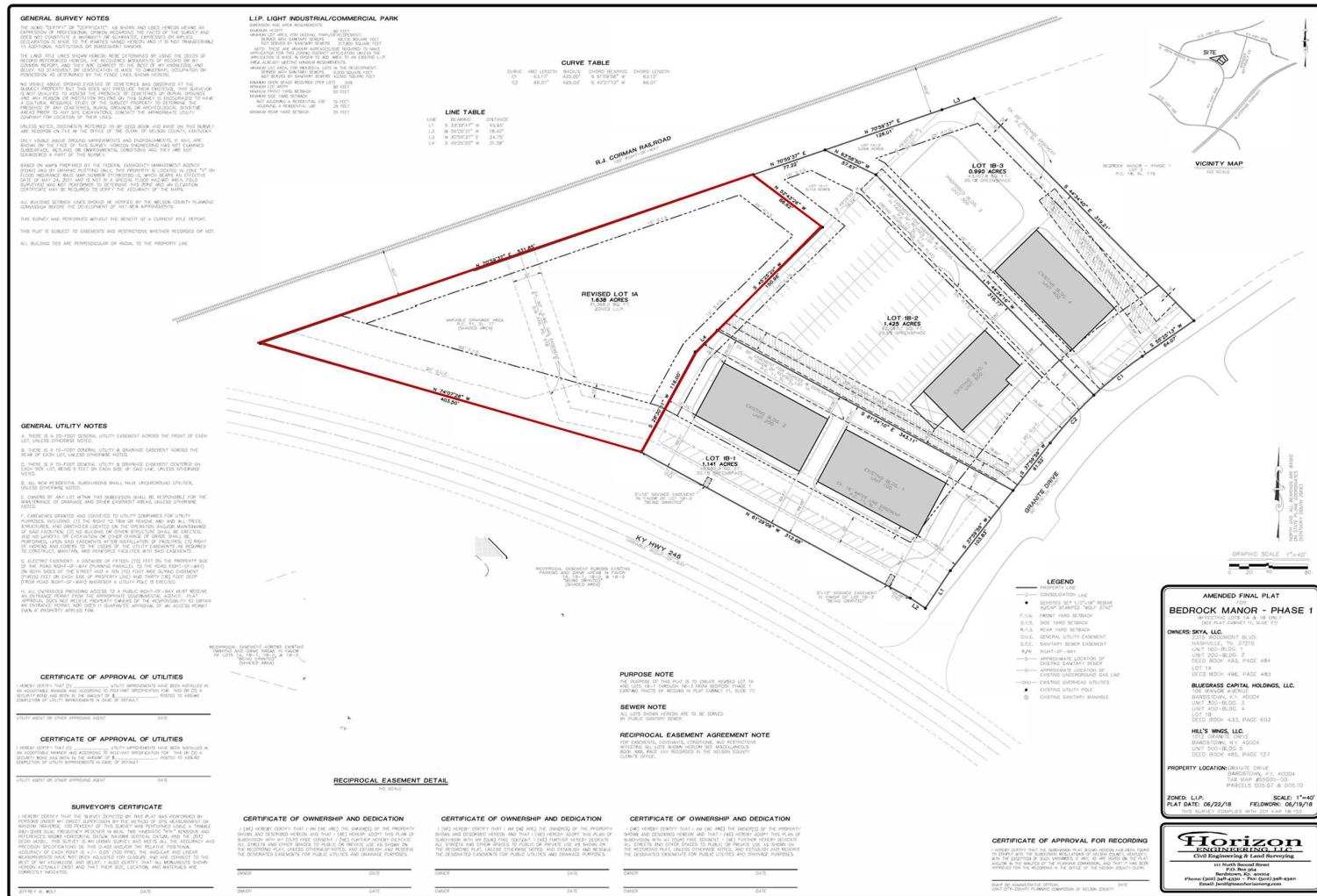
+1 859 224 2000

naiisaac.com



Land For Sale Newtown Plaza 1.64 AC Development Lot

Additional Photos



Full size survey available upon request